



USAID
FROM THE AMERICAN PEOPLE

Assessment of USAID Population-Health-Environment Portfolio

**Assessment Team:
John Pielemeier
Lori Hunter
Robert Layng**



USAID
FROM THE AMERICAN PEOPLE

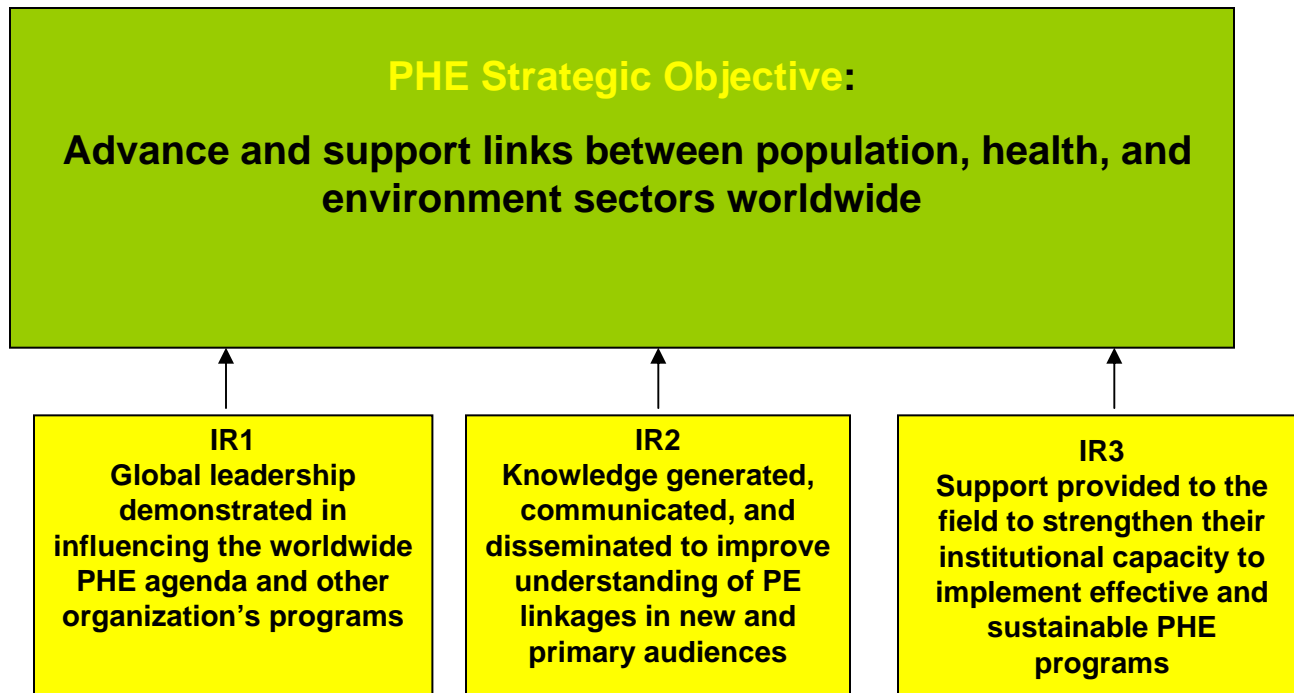
Assessment Objectives / Presentation Outline



- ◆ Review PHE program and activity results, determine effects
- ◆ Determine the portfolio's barriers and challenges;
- ◆ Make suggestions for PHE follow-on strategy.



USAID PRH / PHE Strategy



USAID-Supported "PHE" Projects





USAID
FROM THE AMERICAN PEOPLE

Assessment Objectives / Presentation Outline



- ◆ **Review PHE program and activity results, determine effects**
- ◆ **Determine the portfolio's barriers and challenges;**
- ◆ **Make suggestions for PHE follow-on strategy.**



USAID
FROM THE AMERICAN PEOPLE

Field Projects: Key Conclusions (1)

- ◆ **Helped develop “gold standard” models**
- ◆ **Fostered ENV PVO interest and experience for including FP in “hotspot” programs**
- ◆ **Expanded PHE concept (Uganda example)**
- ◆ **Growing consensus best intervention “package” cannot be limited to FP and conservation, but must include carefully sequenced basic health care and livelihood activities.**



Field Projects: Key Conclusions (2)

- ◆ **Perceptions of “value-added” reaffirmed:**
 - ◆ **cost effective**
 - ◆ **useful model for building long-term trust relationships.**
- ◆ **Good FP and health results can be achieved by environmental NGOs**
 - ◆ **effective training and supervision of CHWs necessary**
- ◆ **Also need**
 - ◆ **special efforts to integrate IEC messages and structure IEC sessions with both sexes present and,**
 - ◆ **to address youth and males as key target groups.**



Field Projects: Key Conclusions (3)

- ◆ **Tendency to “re-invent the PHE wheel” disturbing.**
 - ◆ make better use of mobilization techniques, training manuals, IEC materials developed by “gold standard” projects.
- ◆ **Key issues from previous evaluations**
 - ◆ **Sustainability: models of success now available**
 - ◆ **Scale-up: opportunities exist, but funding needed**



USAID
FROM THE AMERICAN PEOPLE



Technical Leadership: Key Conclusions

- ◆ Recent “Consolidation Phase” produced large number of high quality manuals, best practice summaries, toolkits and analyses now easily accessible
- ◆ WWIC ECSP, PRB and WWF key players in provision of TL
- ◆ Operations Research technically difficult
 - ◆ has yielded some evidence of integrated program “value-added.”
- ◆ TL activities could be strengthened through strategic linkages and joint planning.
 - ◆ Strategic “Expansion Phase” essential to emergence of sustainable PHE network



USAID
FROM THE AMERICAN PEOPLE

Field Support: Key Conclusions

- ◆ PE Fellows program relatively inexpensive and effective for TA and bringing young professionals to PHE;
- ◆ MEASURE/Evaluation has made important contributions through TA and M&E Guide
- ◆ Growing number of USAID missions interested in PHE programs and methodologies;
 - ◆ Even so, PHE program remains relatively unknown within USAID.





USAID
FROM THE AMERICAN PEOPLE

Overall Portfolio's Impact on Broader PHE Field

- ◆ Little or no impact on other potential donors, foundations and/or academic audiences.
- ◆ Because relatively new and absence of strategic advocacy to these communities.





USAID
FROM THE AMERICAN PEOPLE

Overall Portfolio's Impact on Key Focus Countries: Philippines



- ◆ **Essential in:**
 - ◆ fostering growing number of PHE field projects;
 - ◆ training cohort of PHE leaders and advocates;
 - ◆ establishing active PHE network.
- ◆ **Replication occurring through advocacy by involved mayors and NGOs.**
- ◆ **Many LGUs sustaining PHE projects after donor funding**
 - ◆ government decentralized, local funds available.
- ◆ **The Philippines ready for scale-up.**



USAID
FROM THE AMERICAN PEOPLE

Overall Portfolio's Impact on Key Focus Countries: Madagascar



- ◆ **Complements mission support for integrated efforts in environmentally threatened areas;**
- ◆ **Supports pioneering WWF, CI and WCS projects in threatened areas**
 - ◆ **stimulated conservation community interest in PHE;**
- ◆ **Attempts to foster PHE coordinating and advocacy institution have not (yet) been successful;**
- ◆ **National government now aggressively supports both FP and environment programs,**
 - ◆ **Excellent opportunity for scale-up.**



USAID
FROM THE AMERICAN PEOPLE

Overall Portfolio's Impact on Key Focus Countries: Other regions



- ◆ Initial PRH investments have, correctly, been concentrated in key countries;
- ◆ More recent East African and Asian sites well chosen,
 - ◆ strong local interest.



USAID
FROM THE AMERICAN PEOPLE

Other program results



- ◆ Built partnerships with organizations not traditionally focused on FP/RH;
- ◆ Facilitated introduction of FP/RH services to *underserved populations* in regions where non-FP organizations are more likely to have presence;
- ◆ Facilitated leveraging of funds from non-USAID sources;
- ◆ New tools, methodologies, and guides developed that are available to cross-sectoral communities of practitioners.



USAID
FROM THE AMERICAN PEOPLE

Assessment Objectives / Presentation Outline



- Review PHE program and activity results, determine effects;
- **Determine the portfolio's barriers and challenges;**
- Make suggestions for PHE follow-on strategy.



USAID
FROM THE AMERICAN PEOPLE

Principal Barriers (General)



- ◆ **Small number of funders;**
- ◆ **Name?**
 - ◆ **Should PHE be relabeled?**
- ◆ **Limited evidence base;**
- ◆ **Modest implementation capacity in field.**



USAID
FROM THE AMERICAN PEOPLE

Principal Barriers (USAID)



- ◆ Funding “stovepipes” inhibit flexibility
- ◆ Limited PHE knowledge, interest, in USAID missions
- ◆ Limited PHE knowledge, acceptance within USAID/Washington



USAID
FROM THE AMERICAN PEOPLE

Principal Opportunities

- **“Gold standard” projects**
 - Strong network in Philippines,
 - Foundation laid in Madagascar;
- **Models being tested in East Africa, Cambodia, Nepal;**
- **Growing “buy-in” by several international environment PVOs working in remote regions;**
- **A library of resource materials on design, implementation, and evaluation;**
- **Cadre of PHE practitioners for TA;**
- **Continued government decentralization in relevant developing countries.**





USAID
FROM THE AMERICAN PEOPLE

Principal Opportunities (cont.)

- **Model for stove-pipe-breaking, collaboration within USAID?**
- **Re-package as efficient “equity” focused programs for remote areas – e.g. “the extra mile”;**
- **Re-package as efficient approach for providing health/FP services to remote areas as part of “climate change” and “landscape” programs**
- **Provides opportunities to foster south-south collaboration and engage research community.**



USAID
FROM THE AMERICAN PEOPLE

Assessment Objectives / Presentation Outline



- Review PHE program and activity results, determine effects;
- Determine the portfolio's barriers and challenges;
- **Make suggestions for PHE follow-on strategy.**



USAID
FROM THE AMERICAN PEOPLE

Where is PHE Most Appropriate?

- ◆ In (or near) threatened ecological or biodiversity landscapes and protected areas;
- ◆ Where
 - ◆ population density yields ecological pressure;
 - ◆ demographic, health and/or poverty indicators are relatively worse than regional/national indicators;
 - ◆ government services unavailable or insufficient.





USAID
FROM THE AMERICAN PEOPLE

Long-Term Goals for PHE

- ◆ **Enhanced availability of FP in regions where population pressure is major threat to biodiversity, environment;**
- ◆ **PHE scale-up in at least 2 regional ecosystems;**
- ◆ **Many international environment PVOs accept and integrate FP as component of their recommended remote-area community support programs;**
- ◆ **Increased, diversified funding available;**
- ◆ **PHE and other integrated methods of providing FP and health services in remote regions fine-tuned and readily available to donors and implementing agencies.**





USAID
FROM THE AMERICAN PEOPLE

Assessment Objectives / Presentation Outline



- Review PHE program and activity results, determine effects;
- Determine the portfolio's barriers and challenges;
- Make suggestions for PHE follow-on strategy.



USAID
FROM THE AMERICAN PEOPLE



Thank you.

**We look forward to
your comments.**