

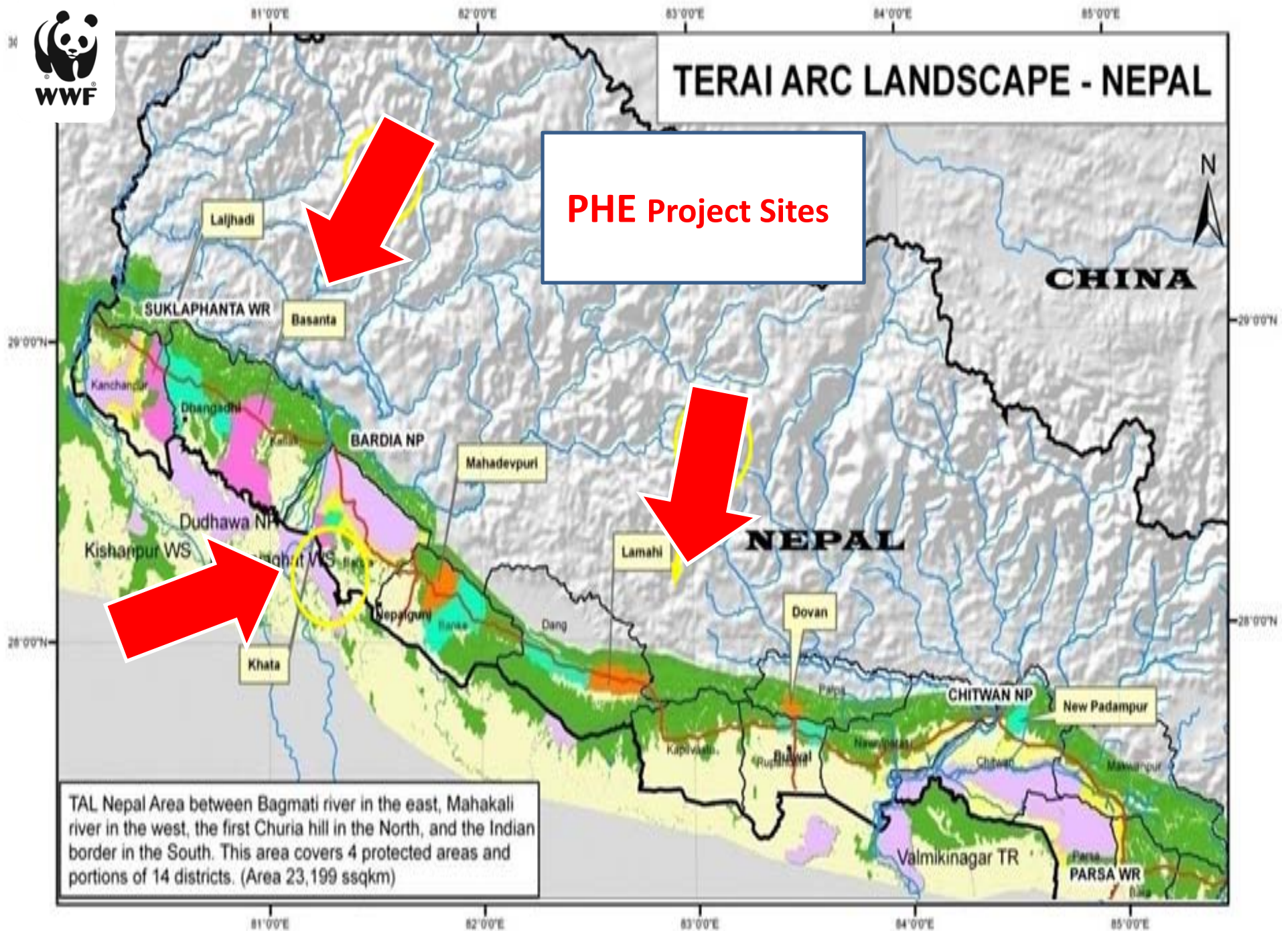
A photograph of a group of people, primarily women, seated in a room with teal-colored walls. They are looking towards the left side of the frame, suggesting they are attending a presentation or a community meeting. The women are dressed in traditional Nepali attire, including saris and blouses. One woman in the foreground is wearing a blue sari, while another to her right is wearing an orange sari. The background shows more people, some standing and some seated, in a similar setting.

# Linking Human and Environmental Health in Nepal



# TERAI ARC LANDSCAPE - NEPAL

**PHE Project Sites**











**Average household  
size in the Terai is**

**8.3**





**90%** of the people have  
agriculture related jobs





## Contaminated Water



Most people earn  
less than **\$2** a day

**71%** gave birth without  
assistance from a skilled  
health worker



































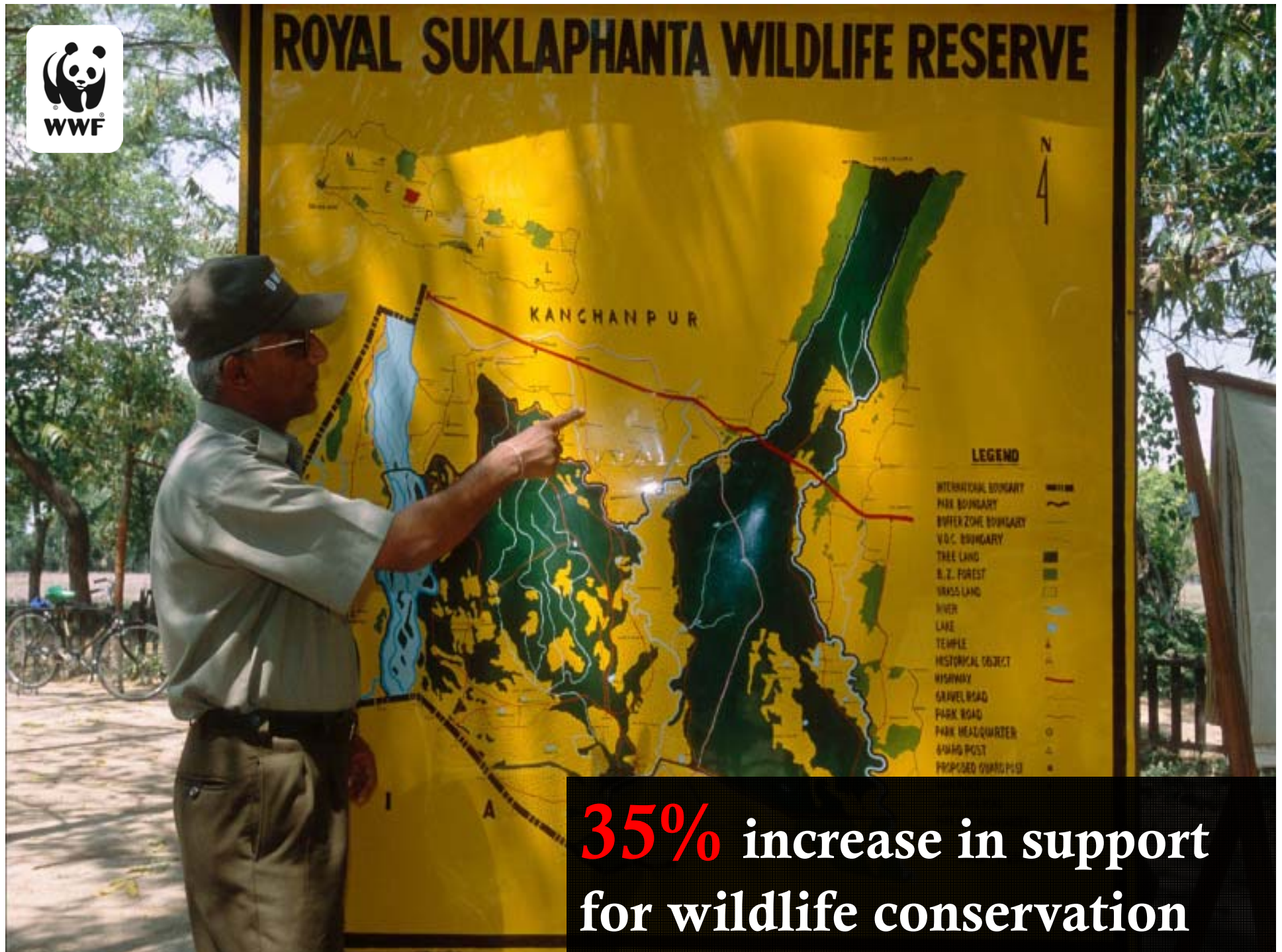




Contraceptive use  
increased by **6%**

Awareness of at least **3** methods of modern  
family planning increased by **17%**





**35%** increase in support  
for wildlife conservation





**24%** increase in energy  
efficient cooking







**32%** increase in biogas  
toilet use



