

# CURITIBA METROPOLITAN REGION



Eduardo Rojas

---

## The management of a metropolitan area

- impacts the **quantity** and **quality** of the services provided to enterprises and the population
- impacts the **efficiency** with which these services are provided
- determines how the cost of provision is **distributed** among the different jurisdictions
- determines citizen **access** to government decisions and government accountability



## Metropolitan management schemes should have

- **Governance**
  - Voice
  - Clear responsibilities
  - Transparency
- **Resources**
  - Autonomous access to resources
  - Decision making capacity over the use of the resources
- **Institutional capacity**
  - Provision of services
  - Management of resources
  - Accountability for resource use



## Key metropolitan services

- **Transportation**: coordinate service provision on the territory of the agglomeration and equitably assign the costs among the beneficiaries (population and jurisdictions)
- **Sanitation**: ensure provision of services in the territory and manage wastes
- **Environmental management**: manage watersheds to preserve aquifers and drainage systems, and prevent pollution
- **Citizen safety**: provide services throughout the agglomeration
- **Social services**: provide health and education services and efficiently assign the costs among jurisdictions



## The construction of metropolitan governance structures require

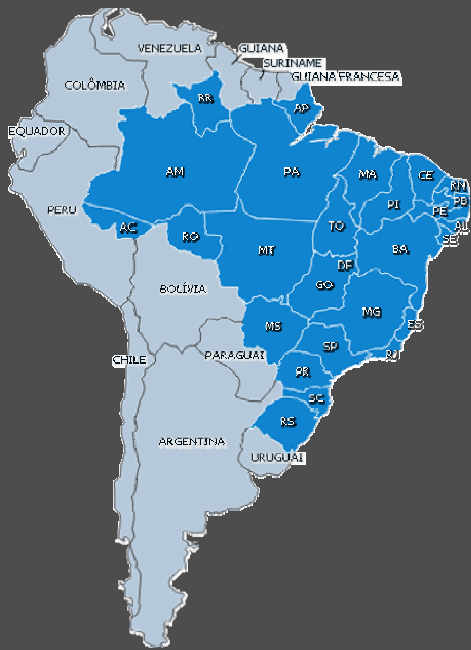
- Reforms in
  - the assignment of responsibilities among jurisdictions
  - the allocation of resources
- ...in turn, the result of ....
  - a political agreement among stakeholders
  - the willingness to transfer resources and responsibilities
- ...that leads to a gradual process of institution building to
  - provide services
  - manage resources
- ... and to empower the population to
  - participate in decisions
  - demand transparency and accountability



# The construction of metropolitan governance structures is a process

- **Initial stage:**
  - fragmented local governments
  - uncoordinated interventions and provision of services
- **First phase, build up political legitimacy Voice:**
  - increase conciseness among the citizens on metropolitan issues and solutions
  - generate institutional frameworks to represent community interest at the metropolitan level
- **Second phase, build up operational legitimacy Service:**
  - establish specialized agencies to provide services
  - coordinate funding for the agencies
- **Third phase, establish institutional capacity Governance:**
  - one tier government, amalgamation of jurisdictions
  - two tier government, coordination and delegation of functions





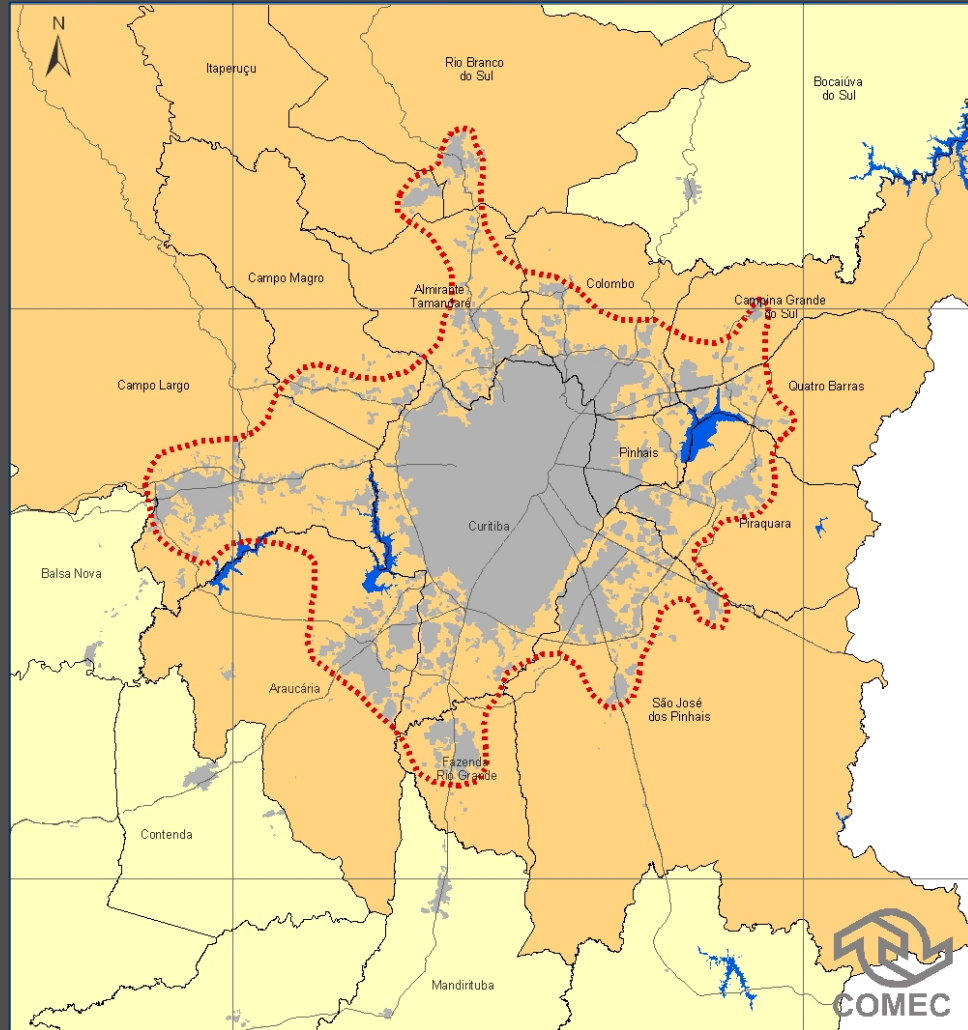
Eduardo Rojas

## Current situation

26 municipalities

### - Population

	2000	2007
<b>Total</b>	2,768,394	3,324,852
<b>Urban</b>	2,524,175 (91.18%)	3,105,300 (93.4%)
<b>Rural</b>	244,219 (8.82%)	219,552 (6.6%)



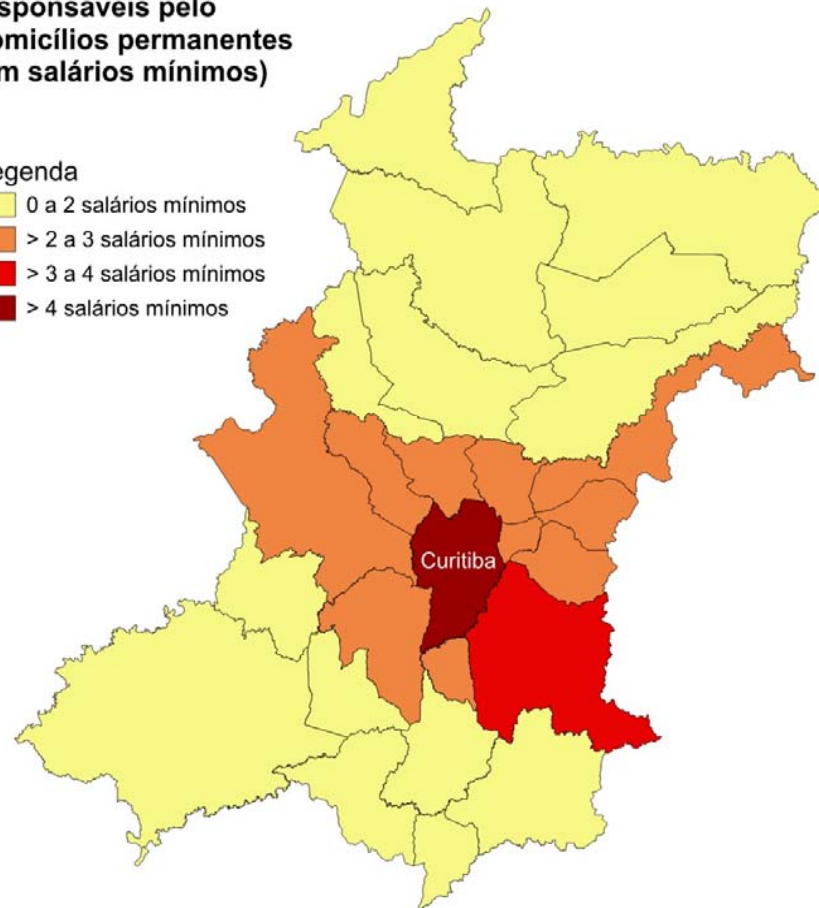


Income distribution  
in the Curitiba  
metropolitan  
region

**Valor do Rendimento Nominal Mediano Mensal  
das Pessoas com Rendimento,  
responsáveis pelo  
domicílios permanentes  
(em salários mínimos)**

Legenda

- 0 a 2 salários mínimos
- > 2 a 3 salários mínimos
- > 3 a 4 salários mínimos
- > 4 salários mínimos



## Consejo Metropolitano de Curitiba COMEC

Established in 1973

14 municipalities

800,000 inhabitants

2008

26 municipalities

3,400,000 inhabitants

### Strategic metropolitan management activities

#### Line 1. Environmental protection

Aquifers

Forests

#### Line 2. Guide urban expansion

Most suitable areas

Reduce investment in infrastructure and transportation

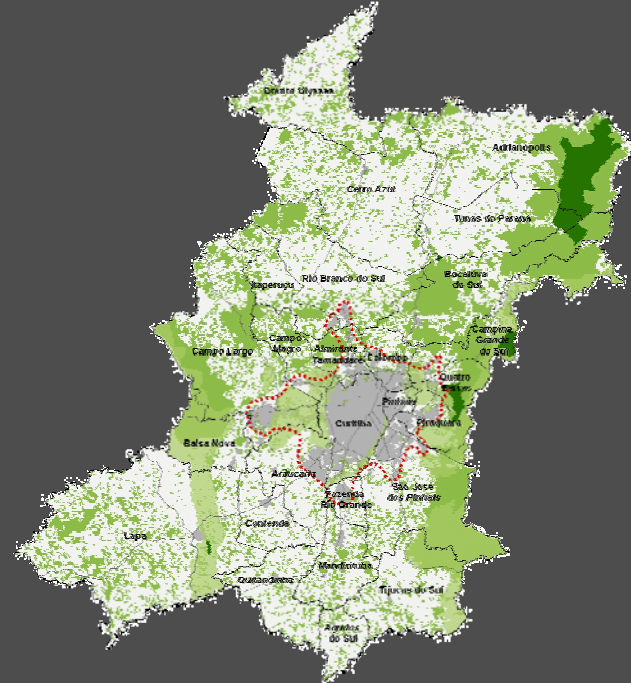
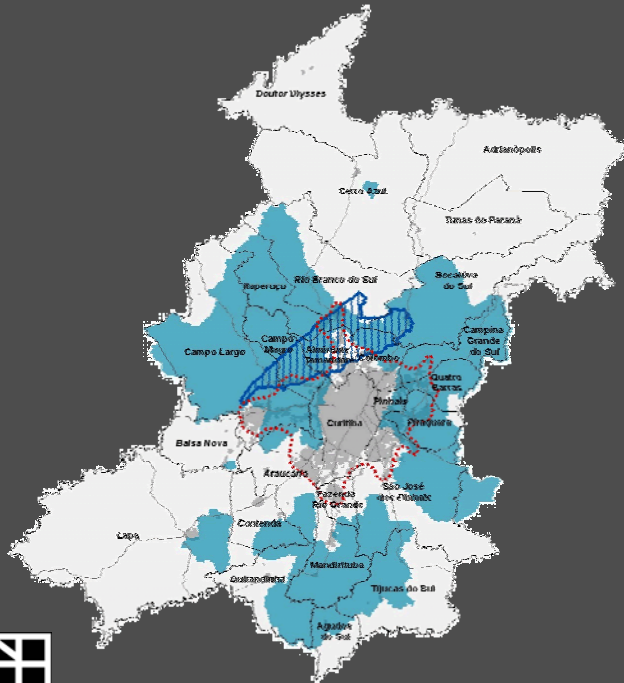


Eduardo Rojas

## Line 1.

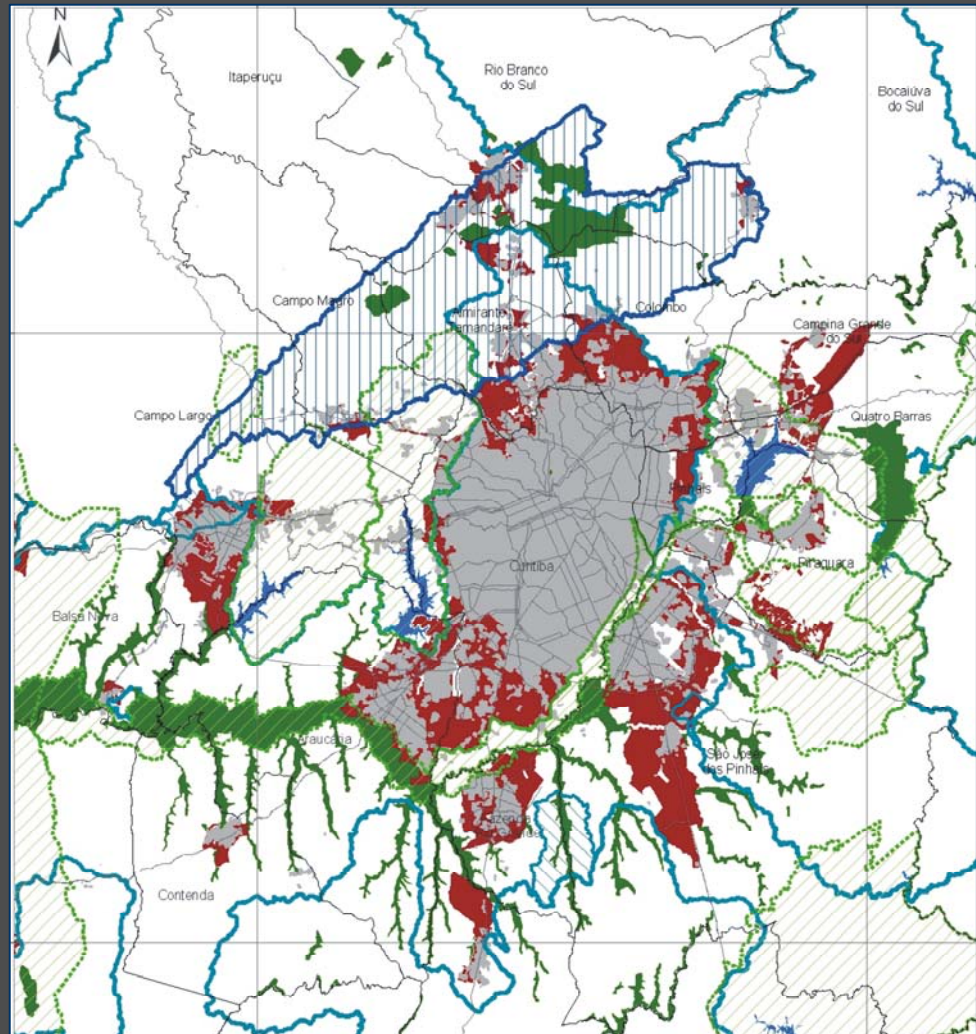
### Protect aquifer and forests

- Land use control
- Upgrading existing settlements
- Fiscal compensation for municipalities facing land use restrictions

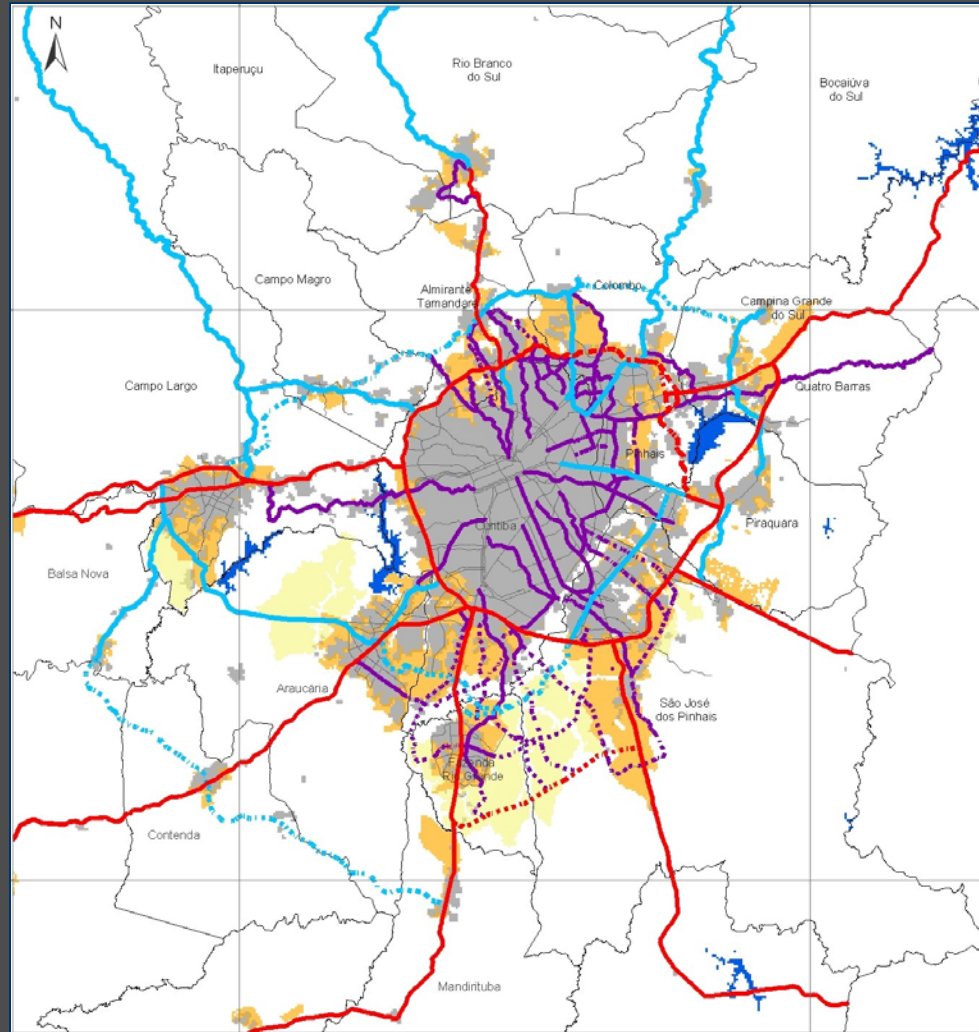


## Line 2. Guide urban expansion

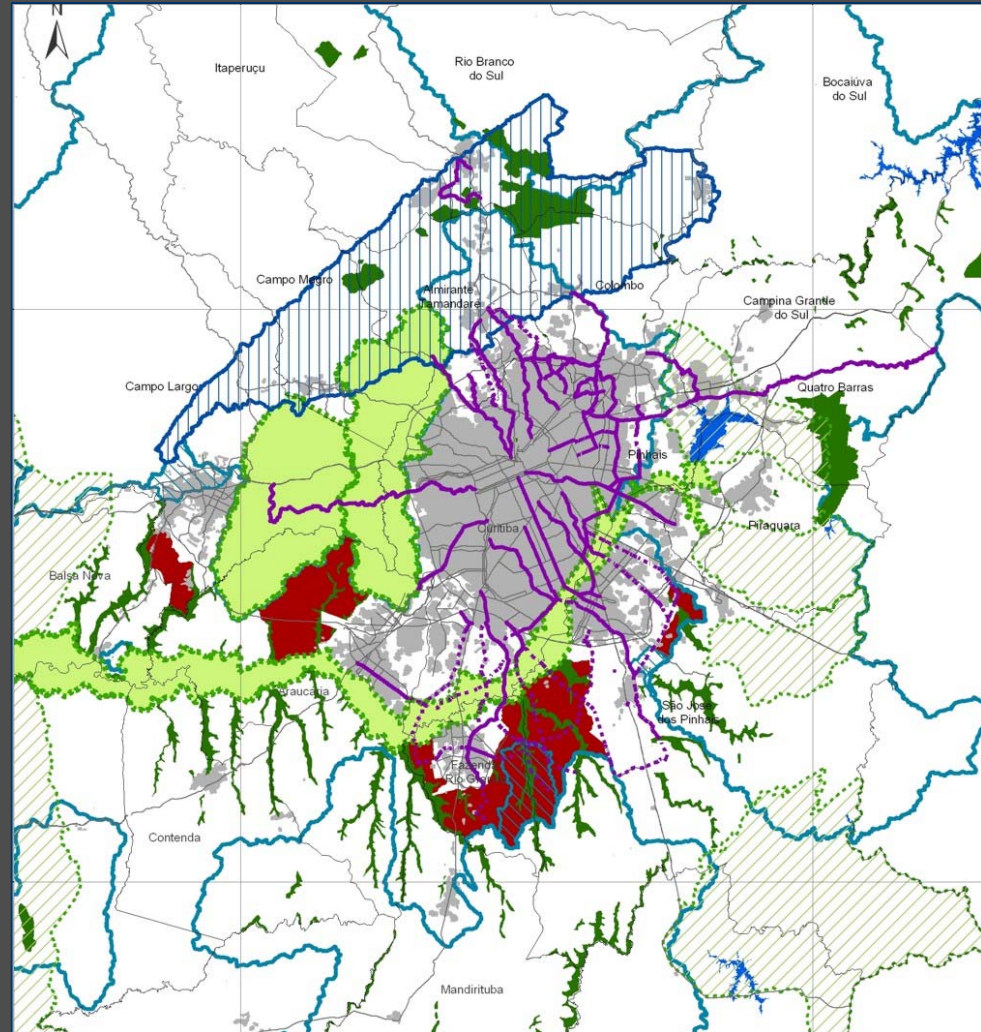
Promote the use of  
unused urban land



Coordinate investment in infrastructure to serve the metropolitan area



Direct new development  
to suitable areas



Eduardo Rojas

