

Gorillas and Family Planning at the Crossroads: CTPH ten year journey

Woodrow Wilson Center, 26th September 2013



Dr. Gladys Kalema-Zikusoka

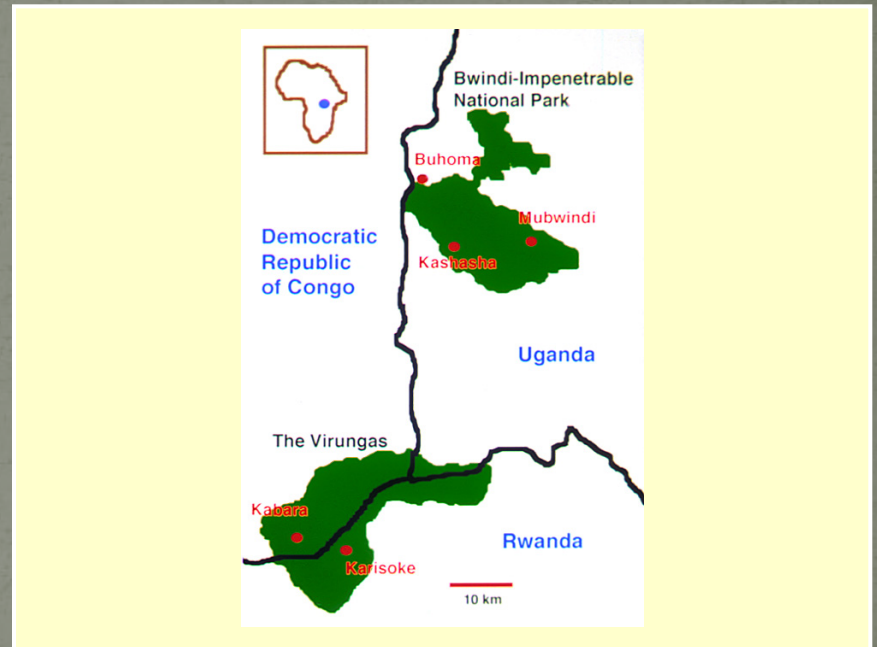
Ashoka Fellow and Whitley Gold Award Winner

Founder and CEO

Conservation Through Public Health



Mt. gorilla population recent increase from 780 to 880



Mountain Gorilla Habitat



Scabies in gorillas and people





Conservation Through Public Health

Mission

- Promotes biodiversity conservation by enabling people, wildlife and livestock to coexist through improving their health and livelihoods in and around Africa's protected areas

Vision

- People, wildlife and livestock living in balance health and harmony with local communities acting as stewards of their environment.



The Solution

Three integrated programs:

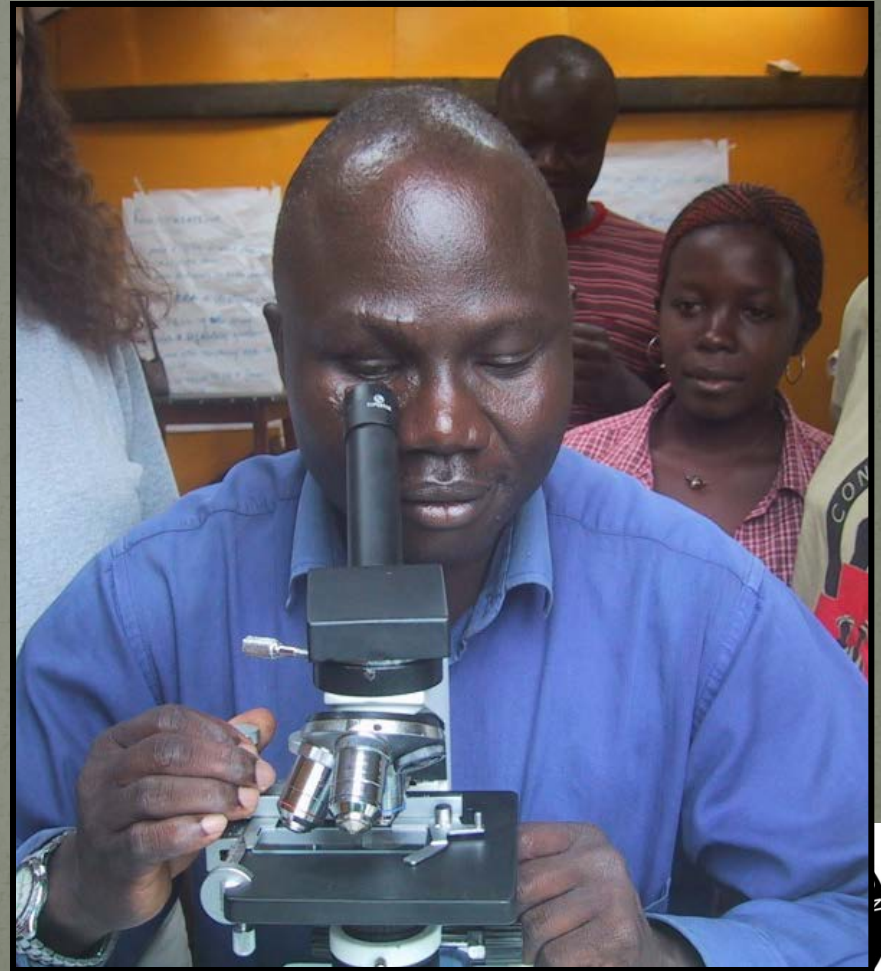
- Wildlife Conservation
- Community Health
- Livelihoods (started with telecentres)



Gorilla health monitoring training



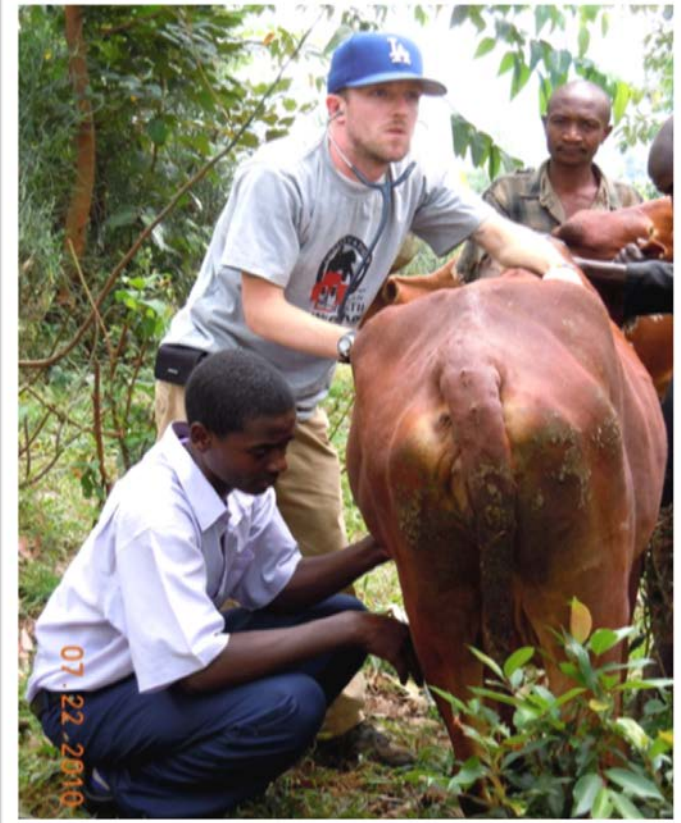
Zoonoses investigations



US Ambassador Steve Browning and wife, Susan visit Gorilla Research Clinic



Livestock health management by CTPH staff, community and international student volunteers



OKWERINDA



KUTATURIZA

ENDWARA

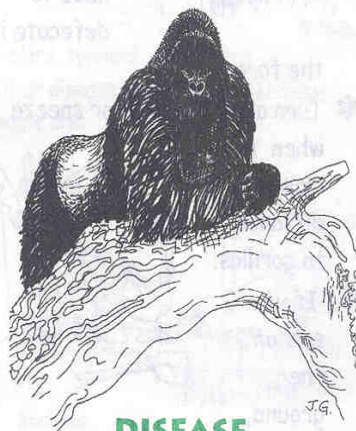
ENGAGI NARI

ZO KU TUTURIZA

PREVENTION

AND

CONTROL OF



DISEASE

TRANSMISSION

BETWEEN HUMANS

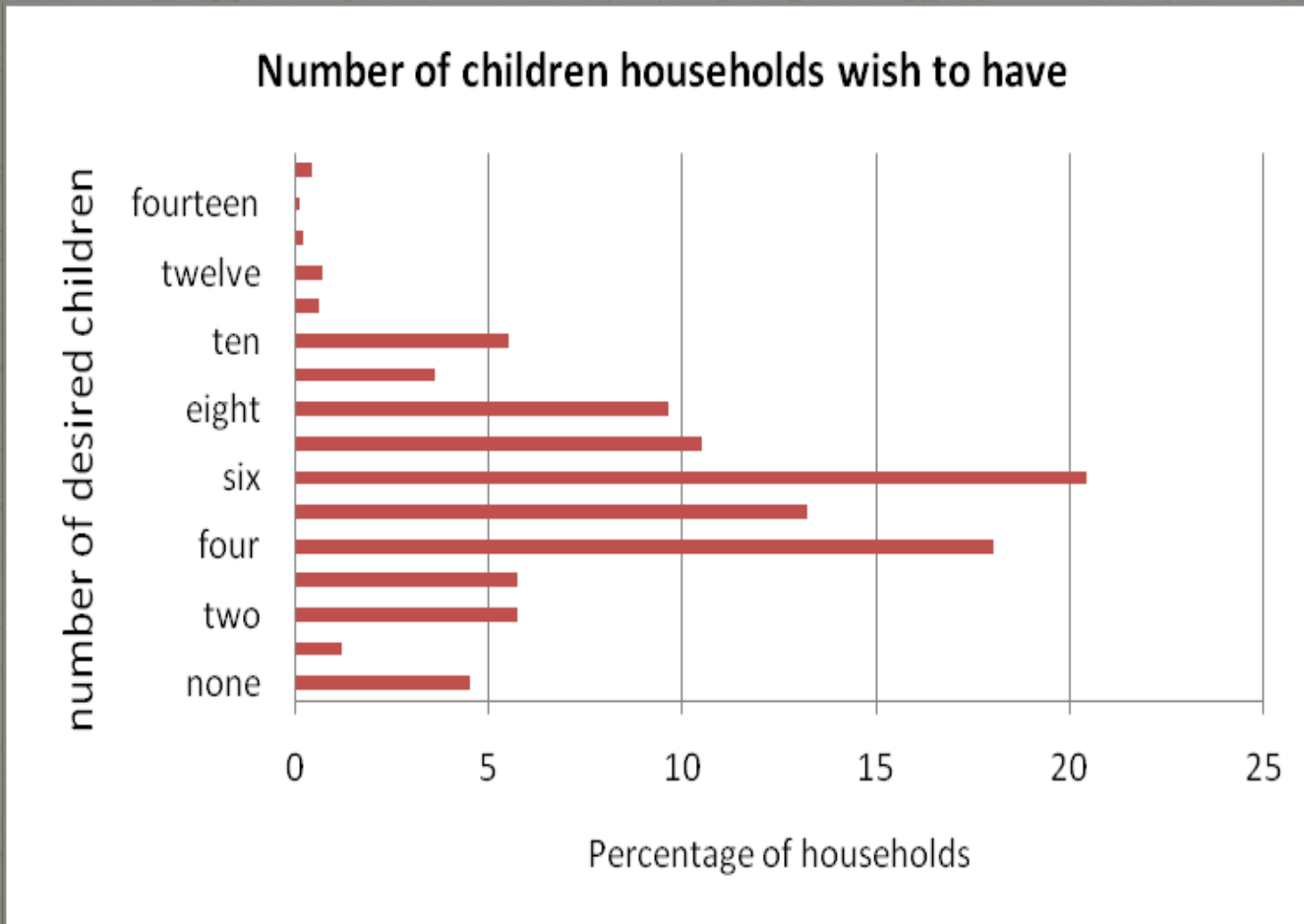
AND GORILLAS



Strengthening community based health care in the TB Community Based Direct Observation of Treatments (CBDOTS) program, while working with traditional healers



Family planning



Adding family planning CTPH Population, Health and Environment (PHE) Educational Flip Chart



CTPH Village Health and Conservation Teams (VHCTs)



CTPH's Village Health and Conservation Teams in Community Based Depo-Provera (CB DEPO) partnership with FHI360



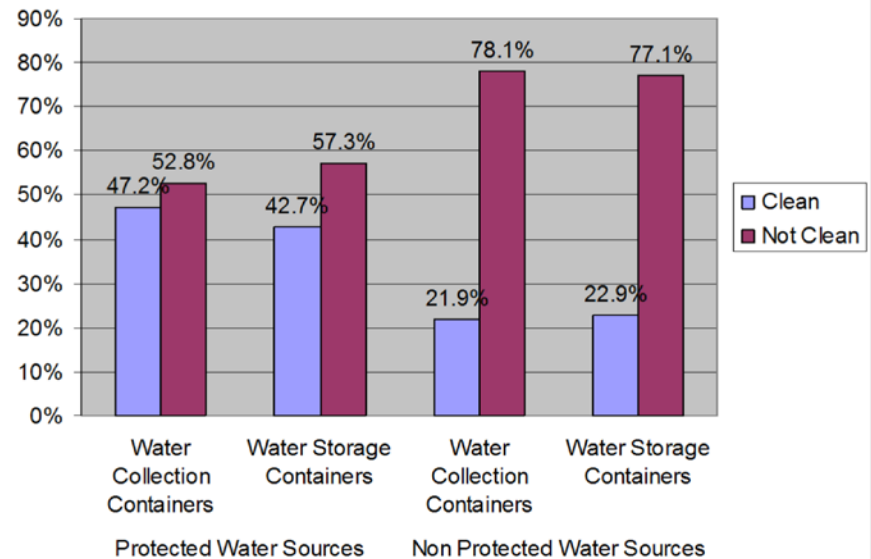
Gorilla crossing microhydel dam in the Bwindi forest



Sanitation and hygiene - behavioral change awareness and surveys



Comparison in Cleanliness of Water Collection and Storage Containers Used at Protected and Non-Protected Water Sources



Virungas - Mount Tshiabirimu



Non protected water source in Mt T



Sustaining Village Health and Conservation Teams (VHCTs)



VHCT income generating projects reinvested into VSLAs



Single Share Value (Ug. Shs.): 1000=

Cycle Number:

Meeting No.	Share bought per meeting					
1						
2						
3						
4						
5						
6						

Starting No. of Shares

Total No of Shares bought this period

Total No. of Shares deducted during period

Net Shares end period

Results – Health and Conservation

- 120 VHCT community Volunteers (Bwindi & Virungas)
- Bwindi Kanungu volunteers now consistently reaching 11,000 people.
- Trained VHCTs in Bwindi Kisoro – 11,000 people; and Virunga national park - 22,000.
- Increased reporting of human and gorilla interactions
- Increased monitoring at the human/gorilla/livestock interface (Intestinal helminths, Giardia, Crypto, Salmonella during gorilla census)



IMPACT – Health and Conservation

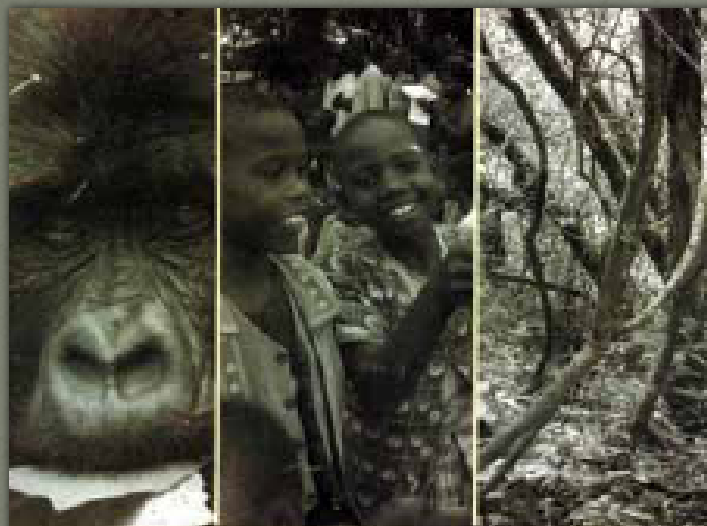
- 12 fold increase in new family planning users, over 60% women above 28% of national average
- 50% increase in hand washing facilities, anal cleansing material, clean water storage containers, drying racks
- 11 fold increase in TB suspects referred
- Reduced human and gorilla conflict
- Reduced disease incidences in the gorillas
- Improved perceived conservation attitudes (plan to measure)



A Sustainable and Scalable Model



PHE Advocacy in Uganda



Uganda Population, Health and
Environment Working Group

Fact Sheet



PHE INDICATOR	2000-2002	2006-2008
Population Size (Millions)	24.2 (2002)	30.7 (2008)
Population Growth Rate	3,2	3,2
Total fertility rate	6,9	6,7
Urban	4,0	4,4
Rural	7,4	7,1
Percent of married women using contraception (modern methods)	19,0	24,0
Infant deaths per 1,000 births	89,0	75,0
Child deaths per 1,000 births	158,0	137,0
Urbanization (% urban of total pop.)	12,0	13,0
HIV prevalence (% of total pop.)	7,9	6,4
Percent of households with access to improved water source	61,0	67,0
Percent of households with access to improved and nonshared toilet	41,0	58,0
Percent of population using firewood and charcoal as fuel for cooking	97,0	99,0

Lake Victoria Basin



Next Steps

- Scale up VHCT and VSLA approach to other protected areas
- Advocate for integrated approaches in Uganda through Uganda Population, Health, and Environment (PHE) working group, Poverty and Conservation Learning Group, **CTPH Patron HRH Queen Sylvia of Buganda**, **UWA Board position**
- Work with training institutions to develop PHE curriculum and CTPH as a field site



Building permanent Community Health and Gorilla Conservation Centre UWA and CTPH partnership



Get Involved

- Sign up for monthly e-newsletter
- Visit us (Premier Safaris and CTPH)
- Make a donation (paypal, network for good, website)
- Continuous CTPH activities
- VHCT meetings and outreach
- Community Health and Gorilla Conservation Centre
- Scaling up to other protected areas
- Participate in special events (CTPH 10 year anniversary this year)



Thank You – Woodrow Wilson Center



www.ctph.org

Acknowledgements: UWA, USAID, ITFC, MOH, Kanungu/Kisoro local government, Bwindi Community Hospital, USFWS, FHI360, WCN, Wildlife D San Diego Zoo, PRB, Ashoka, John Snow International, MacArthur Foundation, Development Cooperation Ireland, African Wildlife Foundation, International Gorilla Conservation Programme, Wildlife Conservation Society, Camp Dresser McKee International, Whitley Fund for Nature, WWF, BALANCED, Expandnet, Ecological Christian Organization, Duke University, PFI



Thank You to all our partners

www.ctph.org



**CTPH is a registered non-governmental organization in Uganda – ID No:
S.5914/4719**

CTPH is a registered 501(c)3, tax exempt charity in USA – ID# 37-1455761

