



# Nigeria's Health Statistics and Trends

Dr Zipporah Kpamor

Being a presentation at the Nigeria Behind the Headlines:  
Population, Health, Natural Resources, and Governance Conference  
organized by

The Woodrow Wilson International Center for Scholars Environmental  
Change and Security Program, Global Health Initiative, and Africa  
Program

25 April 2012

# Introduction 1

- Nigeria is a country on the West Coast of Africa;
- It is the most populous black country in the world
- Nigeria has a young population
  - 52% live in rural areas
- Nigeria is rich in diversity:
  - with substantial oil reserves
  - over 70% poor.
  - significantly economic growth unimproved everyday livelihoods.
- Nigeria has some of the poorest health indicators in the world
- Why?



# Introduction cont'd

- Nigeria operates a Federal System of Government with three levels;
- There are 774 LGAs within the 36 states and Federal Capital Territory (FCT) Abuja.
- The states and FCT are grouped into six geo-political zones:





# The Health System

- The Nigeria Health System is fashioned after the 3 tiers of Government
- Players
  - Government
  - Non- Government Players:
  - Donors – USG; DFID, Global Fund
- PHC – adopted to provide health for all Nigerians.
  - Very little community participation
- Quality of care needs substantial improvement.

# Trend and Targets of Selected Health indicators

Indicator	2003	2008	2015 Target
Population	124 million	158 million*	
Life expectancy at birth	46.5	47 years	70 years
TFR	5.7	5.7 children	
Modern method CPR	8%	10%	36%
Unmet need for FP	17%	20%	0%
Maternal Mortality Ratio	800/100,000 LB	545/100,000 LB	136/100,000 LB
Women with at least 4 antenatal care (ANC) visits	48%	45%	
Births delivered by a skilled provider	43%	39%	100%

Sources: 2003 NDHS; 2008 NDHS; UNDESA, 2010\*; FMOH\*\*



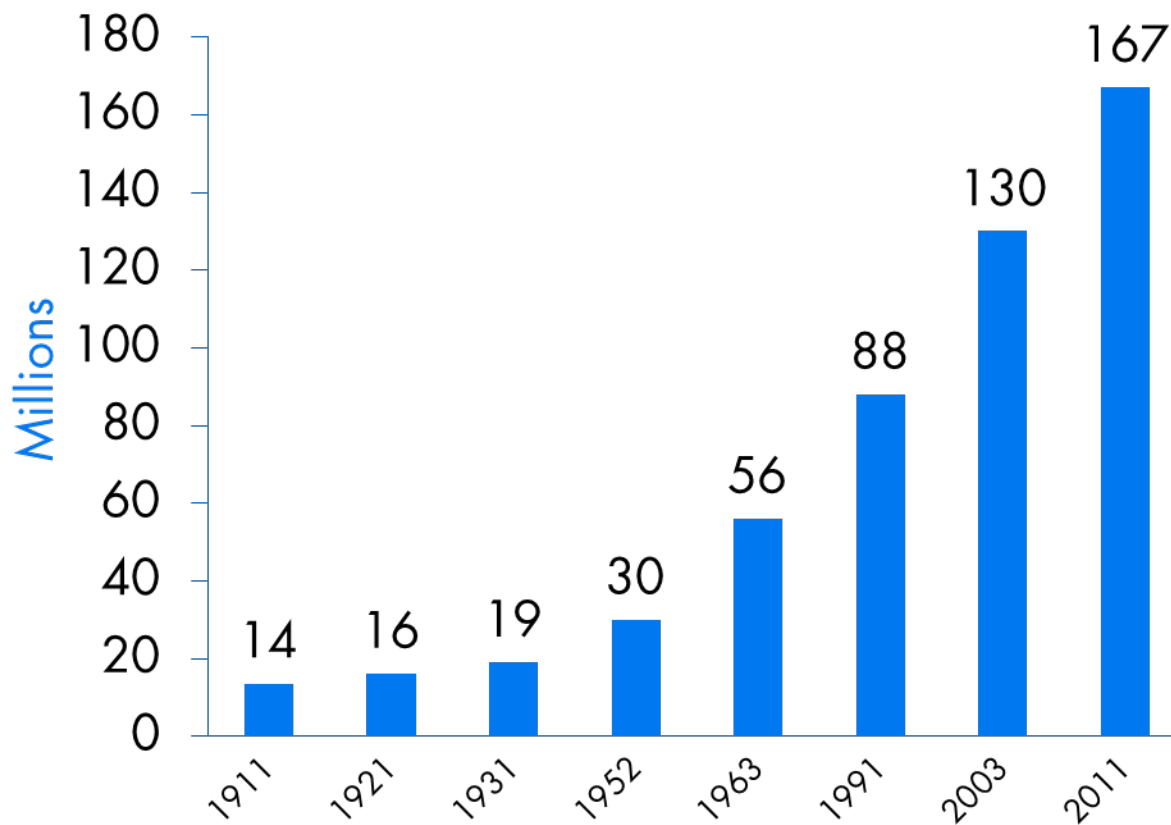
# Trends and Targets of Selected Health Indicators cont'd

Indicator	2003	2008	2015 Target
Infant mortality rate (IMR)	100/1000 LB	75/1,000 LB	30/1000 LB
Under-five MR	201/1000 LB	157/1,000 LB	75/1000 LB
Proportion of 1 year old children immunized against Measles	60%	41 %	95%
Children under 5 who are underweight for age	29%	23%	18%
Children under 5 who slept under an ITN the night before the survey	1.2%	23%	60 %
HIV prevalence	5.0%	4.1% **	1%

Sources: 2003 NDHS; 2008 NDHS; UNDESA 2010\*; FMOH\*\*; MDG 2010 Report

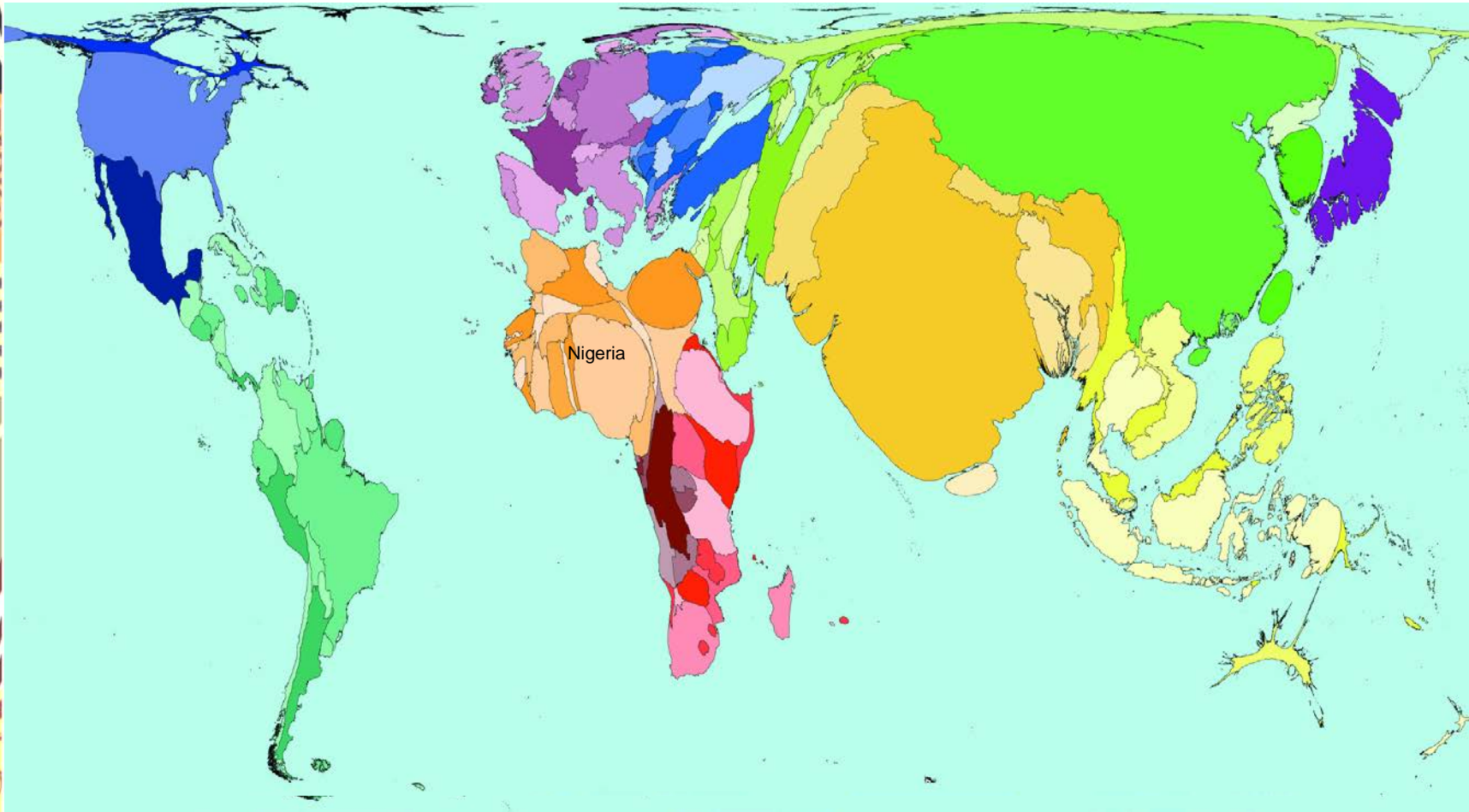
# Population of Nigeria

Rapid Growth



Grew 12 fold in  
a century!

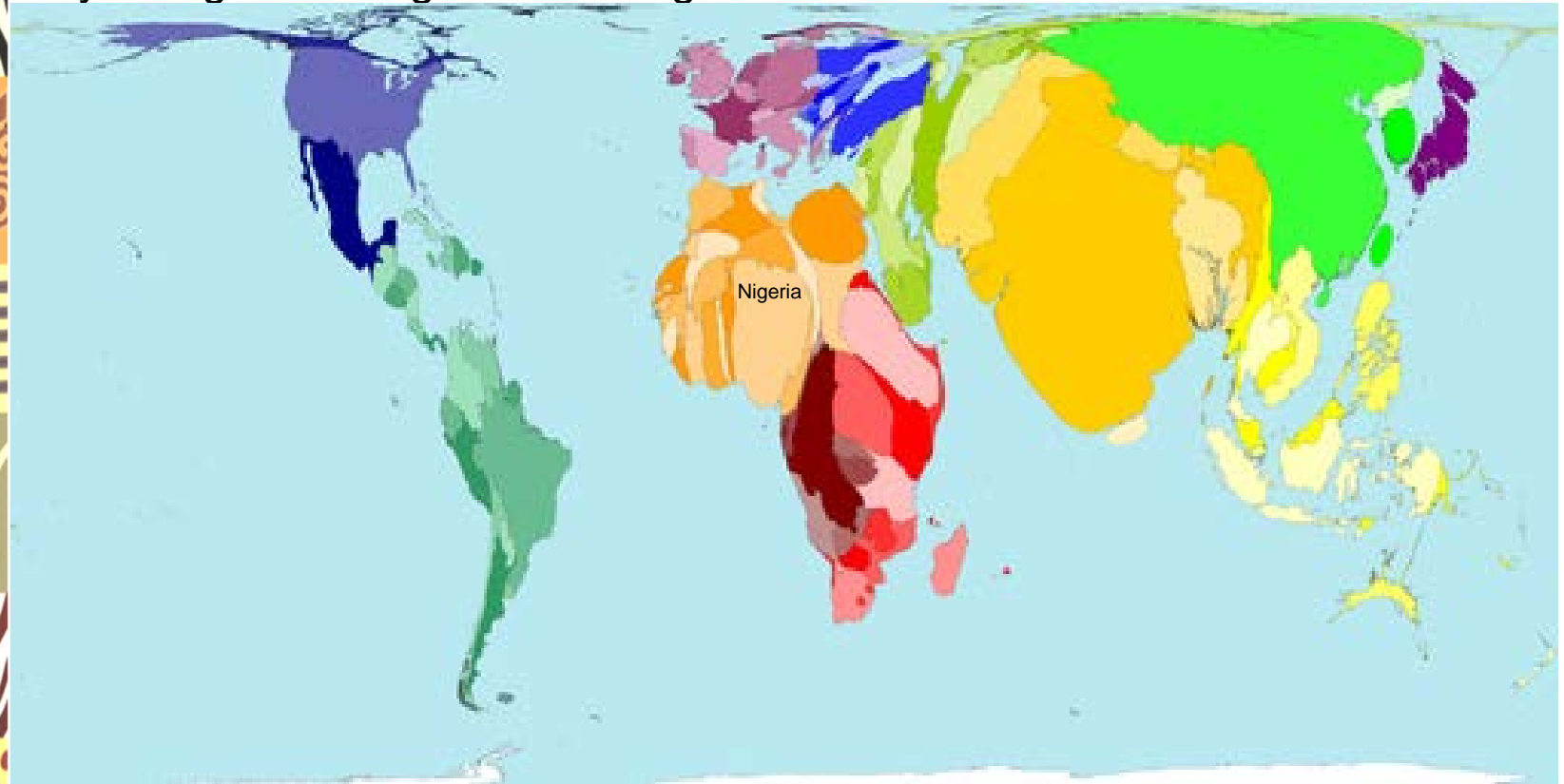
# Large Population





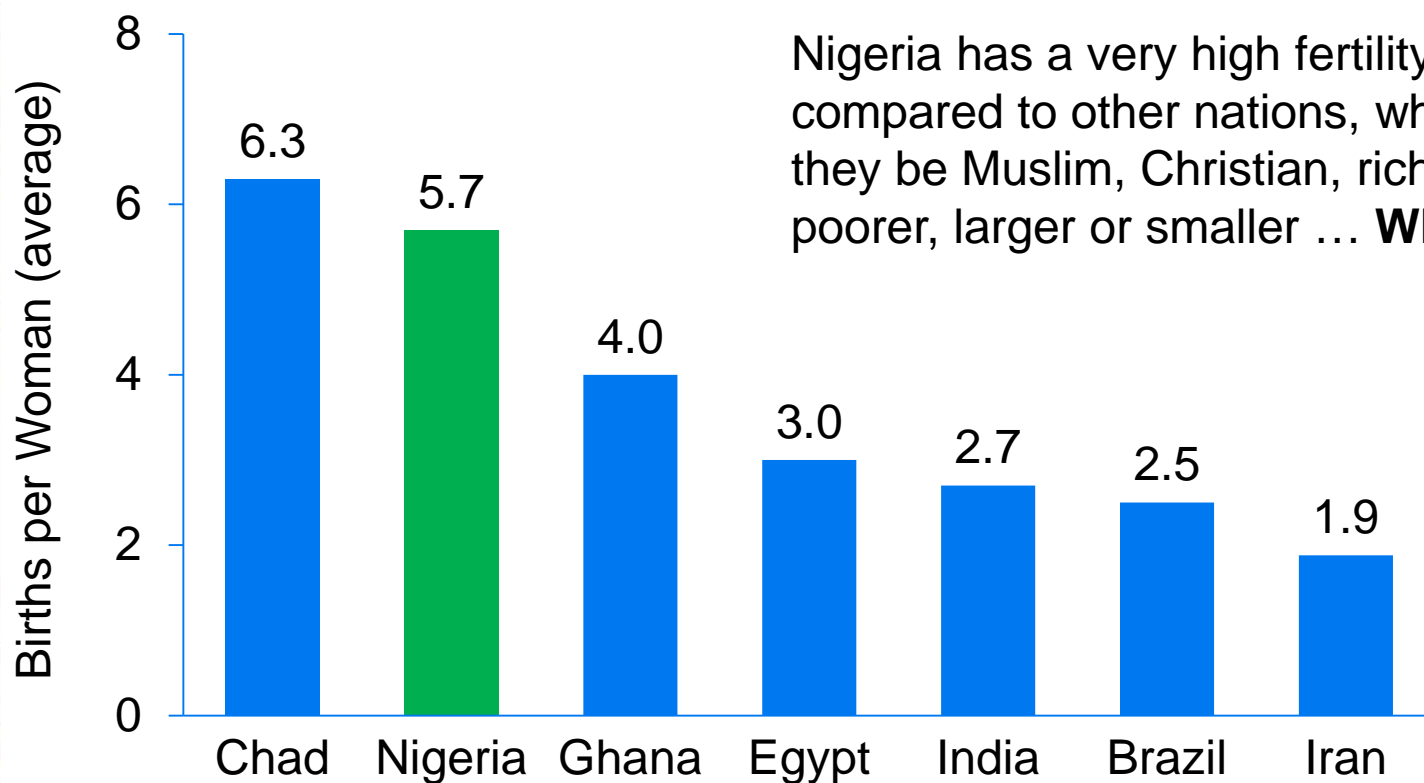
# Projected Population 2050

Why is Nigeria failing to meet its goal



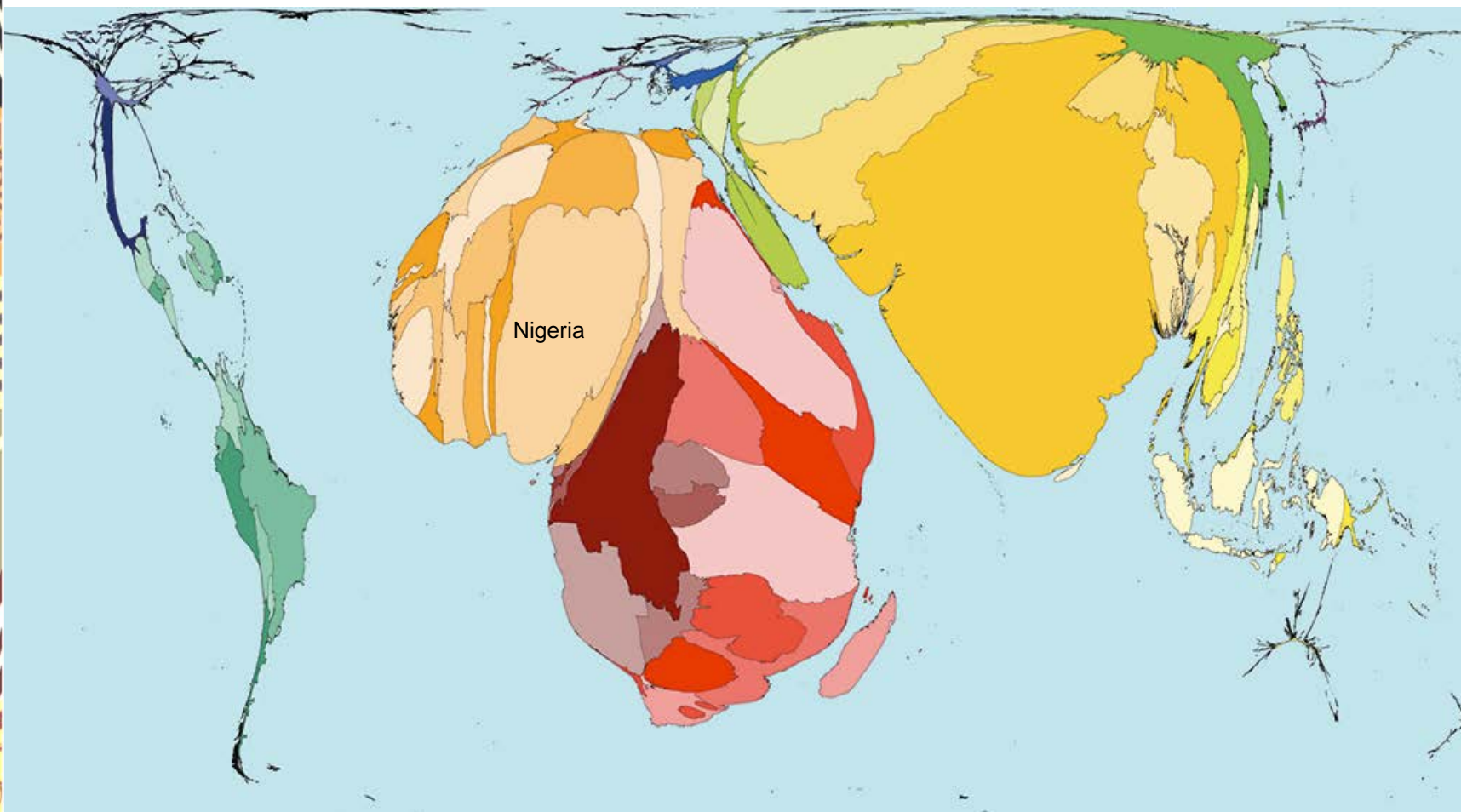
# Fertility Comparison

Nigeria and selected countries



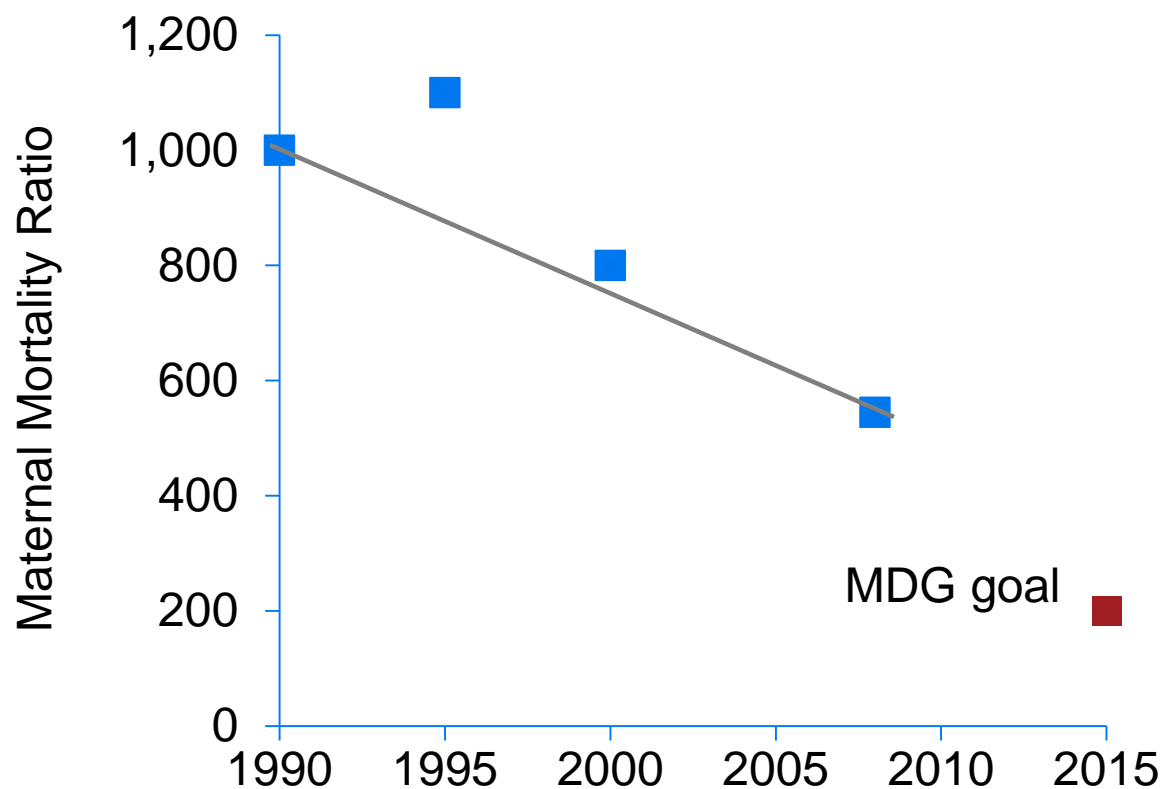
Source: 2008 NDHS

# Maternal Mortality



# MDG Goal #5: Lower Maternal Mortality

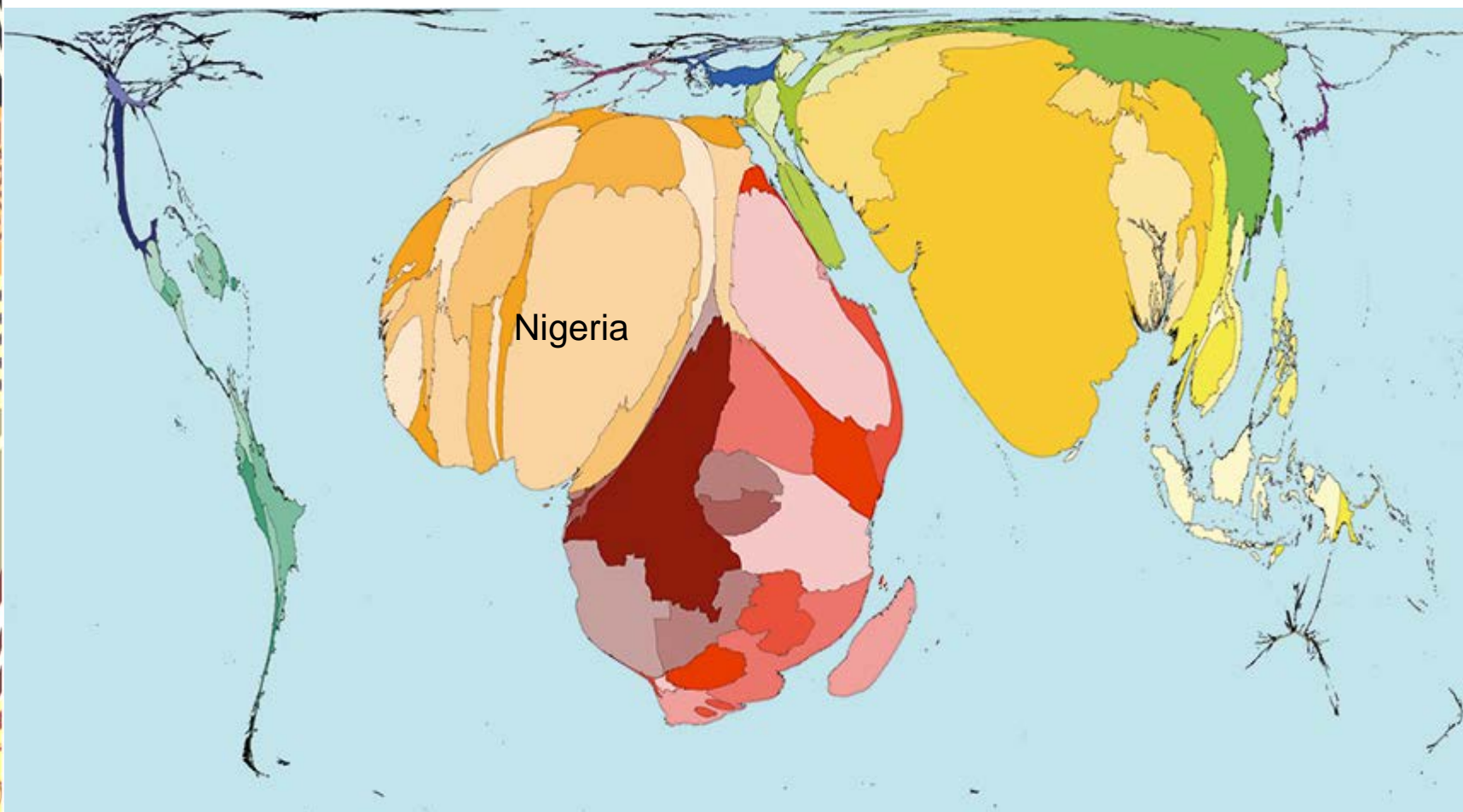
Why is Nigeria failing to meet its goal?



Sources: 1990, 1999, 2003, and 2008 NDHS; MDG 2010 Report



# Child Mortality





# MDG Goal #4: Lower Child Mortality

Why is Nigeria failing to meet its goal?

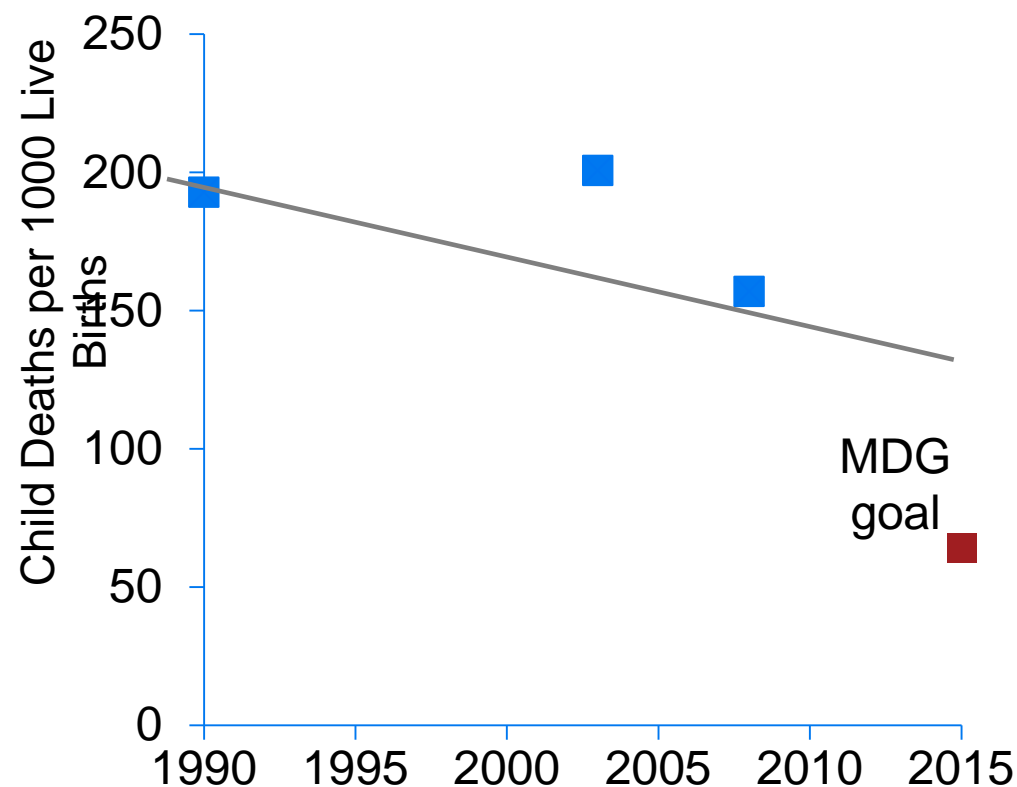
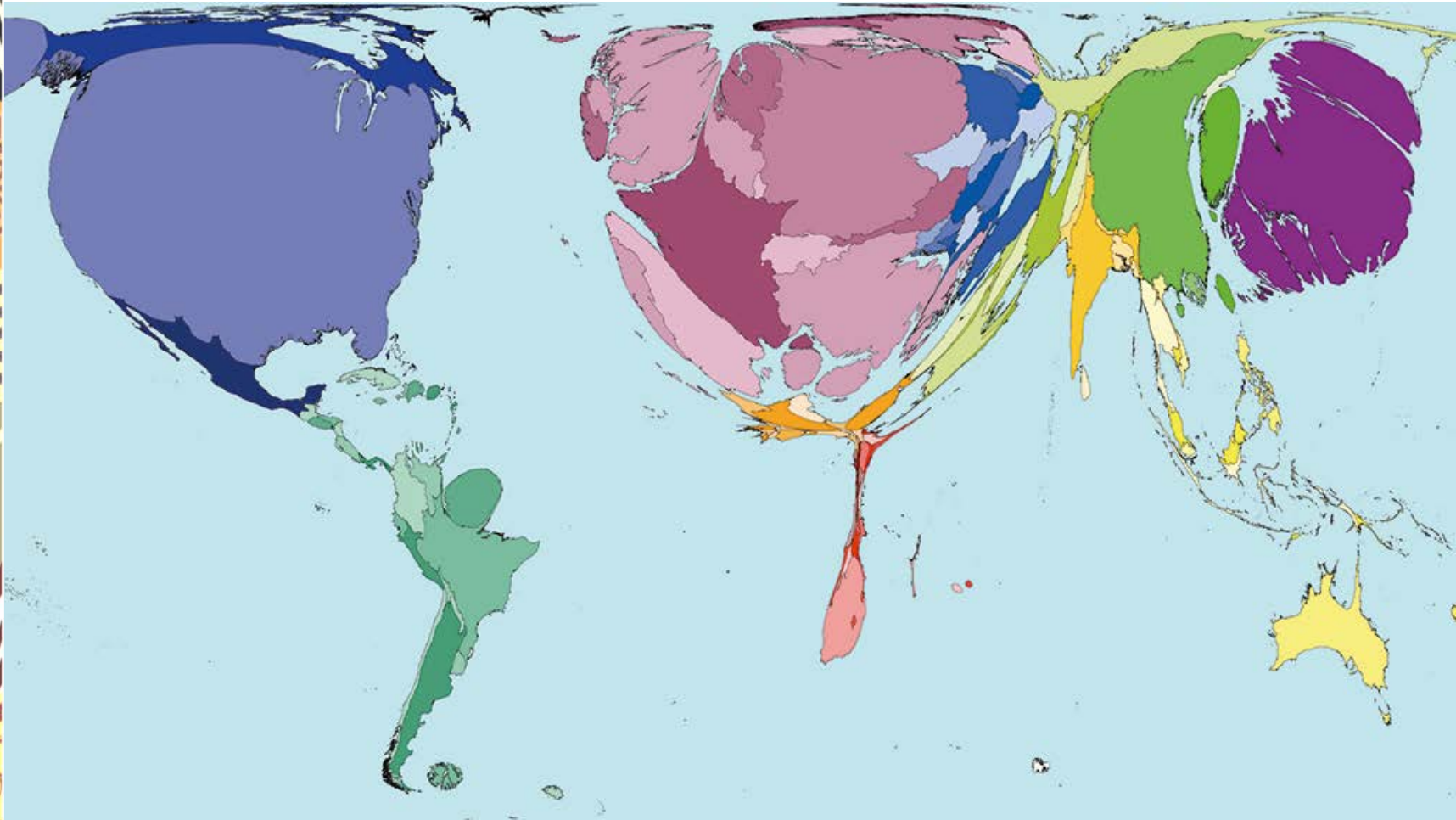


Photo by Joachim Huber

Sources: 1990, 2003, and 2008 NDHS; MDG 2010 Report

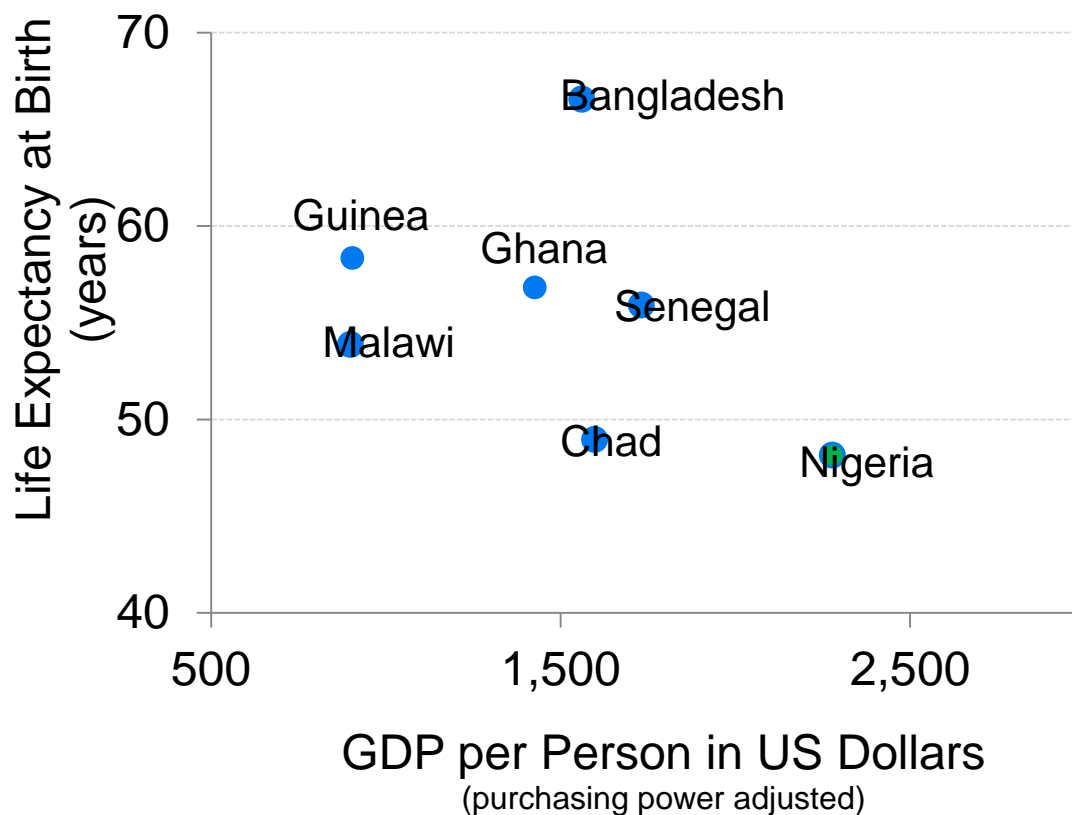
# Government Spending on Healthcare



Source: [www.worldmapper.org](http://www.worldmapper.org)

# Health Comparison, 2010

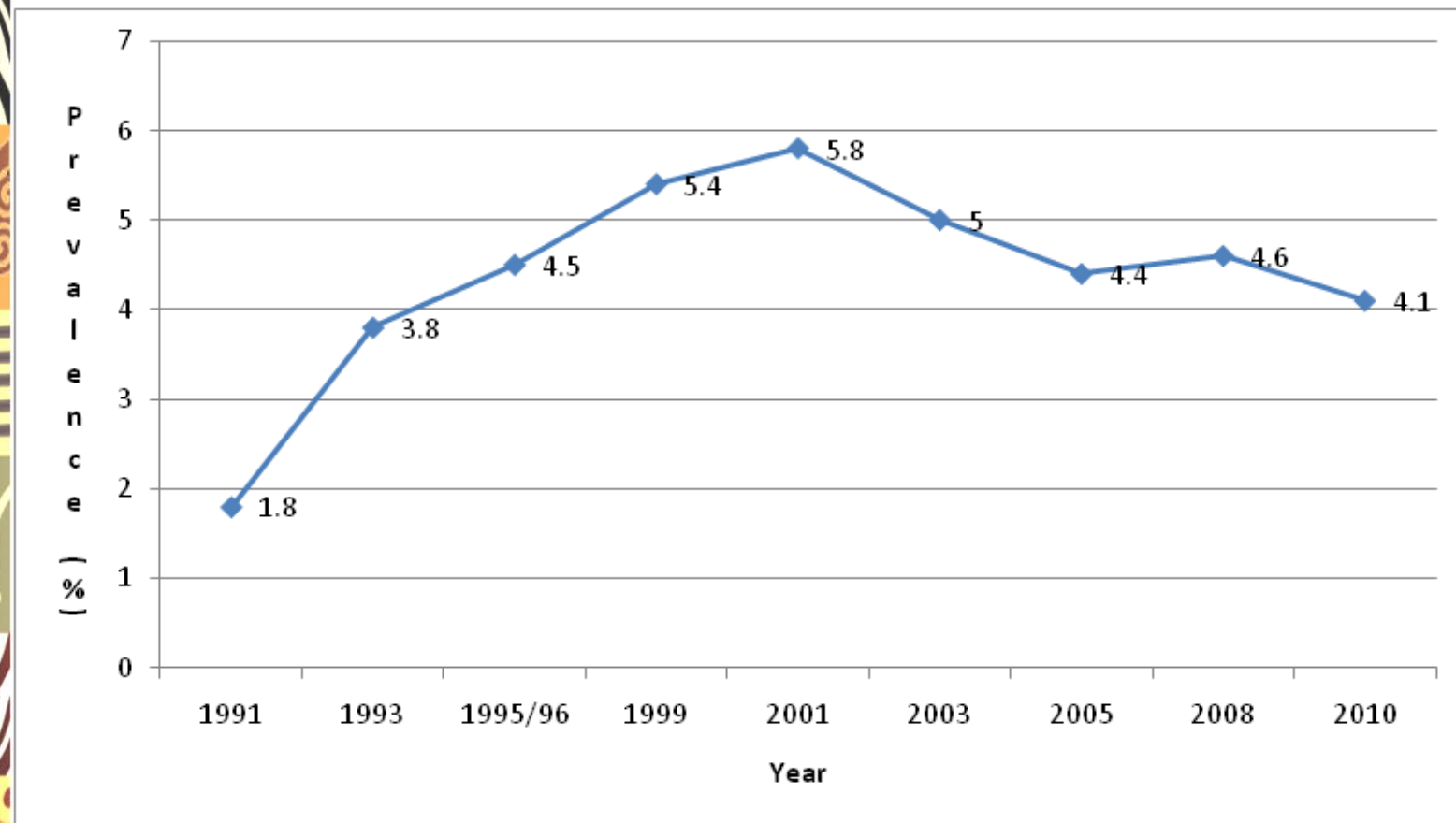
Many countries with less wealth than Nigeria have achieved better health



Why?



# HIV Prevalence



Source: FMOH 2010

# GON's Response thus far

- Political will – country ownership
- Policies, Guidelines; Coordination bodies
  - National Strategic Health Development Plan (NSHDP) 2010-2015
  - National Policy on Population for Sustainable Development (NPPSD)
  - National Primary Health Care Development Agency (NPHCDA)
  - MDG Office - Oversight of Public Expenditure in Nigeria (OPEN)
  - NEEDS; NAPEP
- Health Bill





# What must Nigeria do?

- Ensure leadership, governance, management and accountability
- Improve Human Resources for Health (HRH)
- Improve delivery of the highest impact interventions, particularly at the PHC level
- Reduce poverty – Poverty – Ignorance – Disease
- Curb Population growth