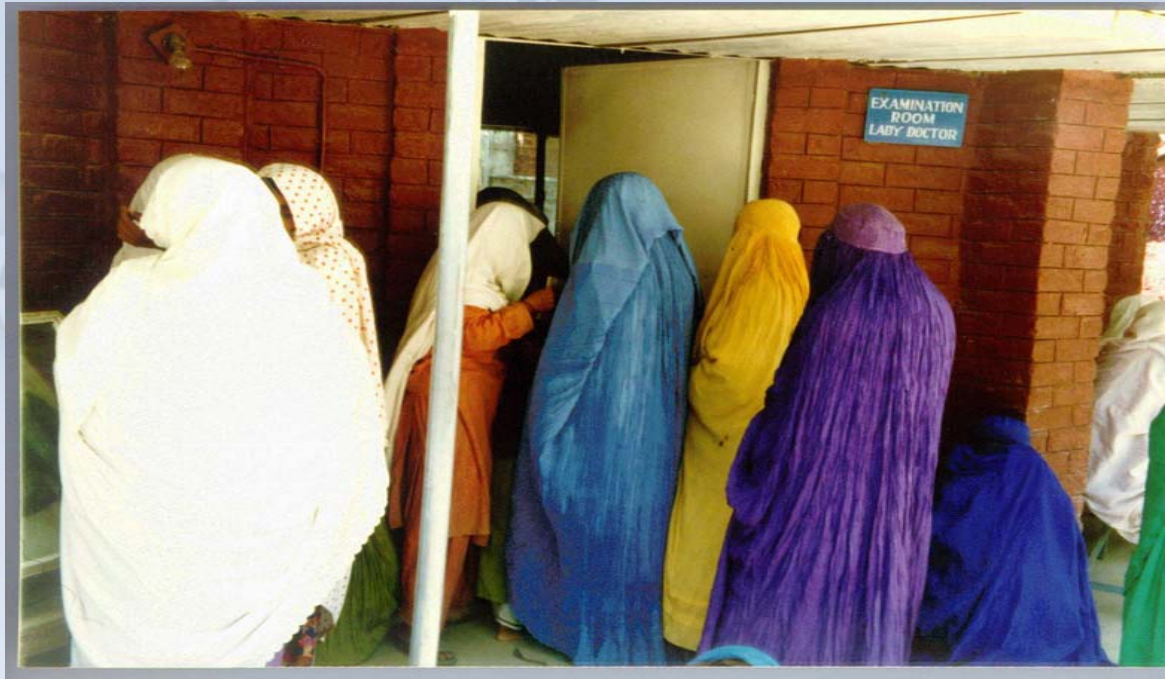


# Reproductive Health and Recovery



Meriwether Beatty: JSI Research and Training Institute



May 20, 2009  
Research & Training Institute, Inc.

# Traditional linear model



MOH

Acute  
Emergency

Stabilized  
setting

Transition

Development

MISP

Comprehensive  
RH

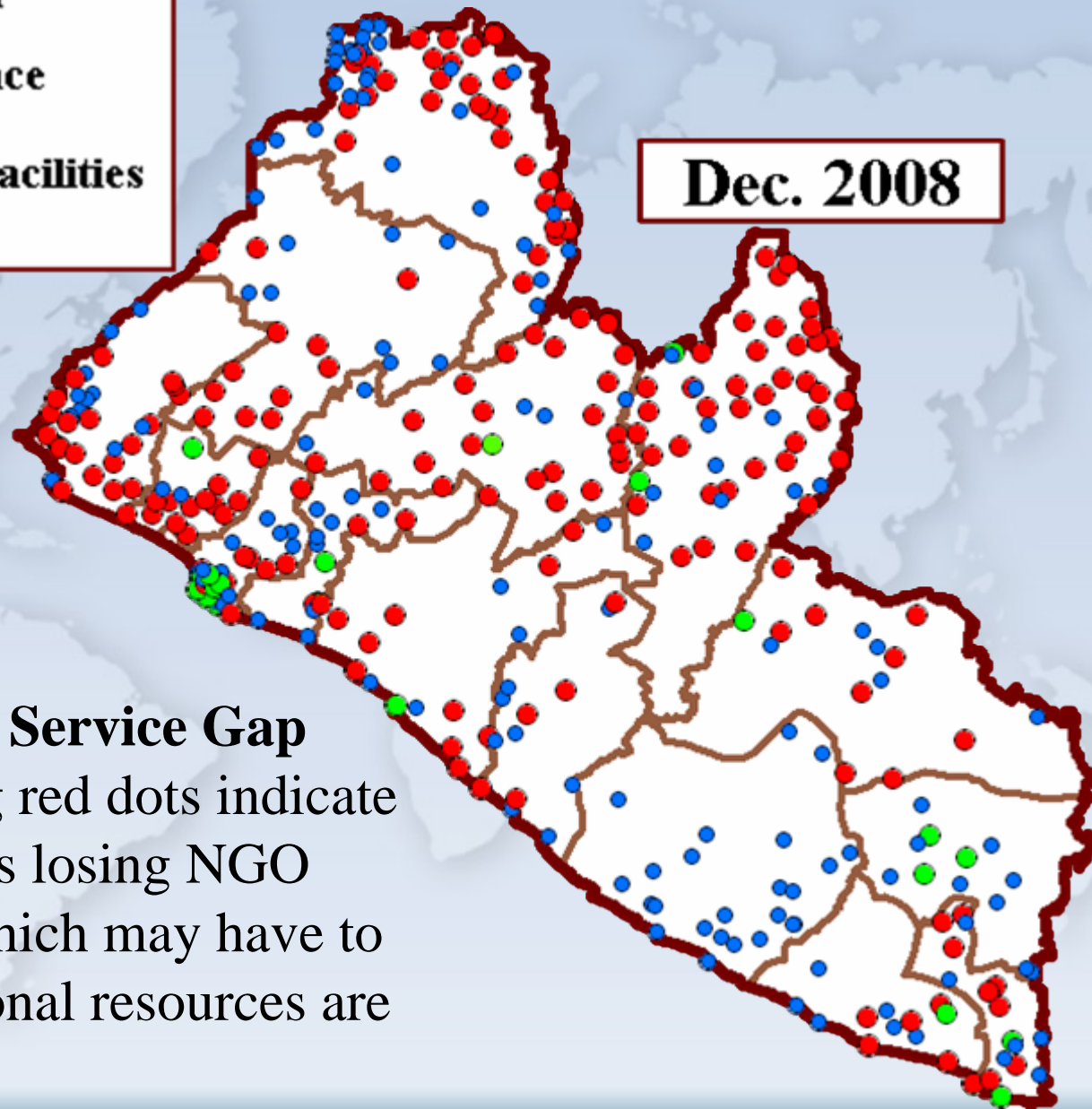
Policy dev.  
System bldg.



Research & Training Institute, Inc.

- NGO-assisted
- NGO-assistance terminated
- Other health facilities

Dec. 2008



## The Potential Service Gap

The increasing red dots indicate health facilities losing NGO support and which may have to close if additional resources are not available.



Research & Training Institute, Inc.



# Consequences and Challenges of the Transition Funding Gap



- Service disruption
- Higher out of pocket costs for health care
- Reduced access
- Decreased utilization of services
- Rising morbidity and mortality
- Increased instability



# Liberia RH survey: 2007

- Look at RH indicators during the transition period
- RH indicators as bad as during the crisis, but less funding



# Research + Action

## I. Data Collection:

### **A. Research**

Population based survey

### **B. Action**

Ongoing Monitoring

Program Evaluation

## II. Findings:

### **A. Research**

Analysis

### **B. Action**

Dissemination

## III. Implementation of findings/ ongoing programming

### **A. Research**

Translating the findings

### **B. Action**

Addressing gaps identified through survey findings

Ongoing capacity building and technical support



# Partnership and Capacity Building

- Local NGOs are closest to communities in need
- Can complement other health services
- Strengthen linkages between civil society, government and international agencies
- Potential for greater sustainability and continuity of services



# Challenges AND Opportunities



- Clear vision including:
  - Strong RH Policy and system strengthening/building
  - Partnership
  - Capacity Building





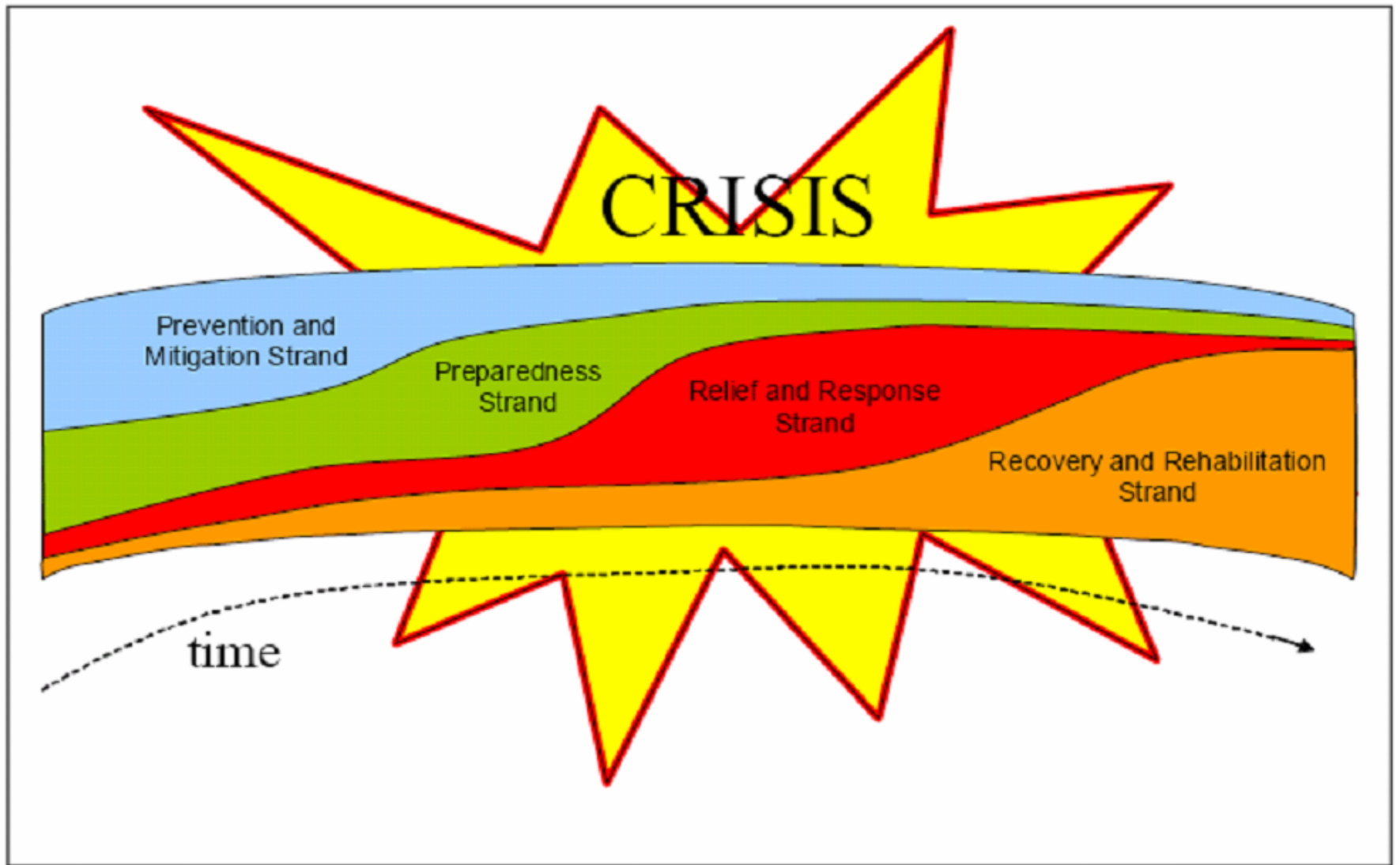
*“As stated by President Ellen Johnson Sirleaf, for capacity building to be truly sustainable, it must be indigenous, building on the experience of all Liberians and encouraged by their own social conditions, as well as their dreams and desires. We understand that the issue of sustainability is paramount, as is the need for support and assistance from our donors and partners. We all share the goal of developing our internal capacities so Liberia will thrive with diminishing dependence on outside support.”*

National Health Policy Forward (August 2007)



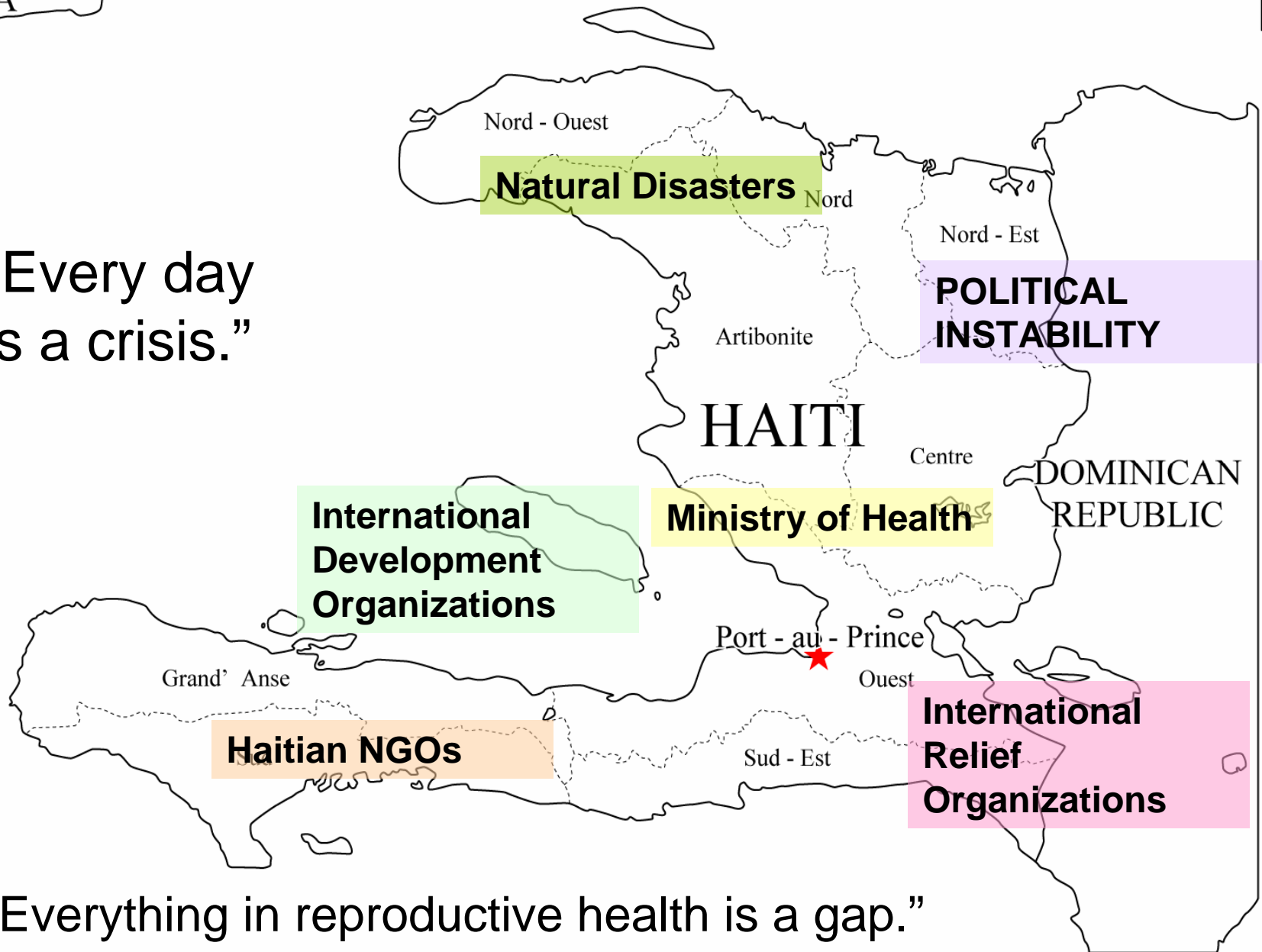
Research & Training Institute, Inc.

## Expand-Stretch Model



CUBA

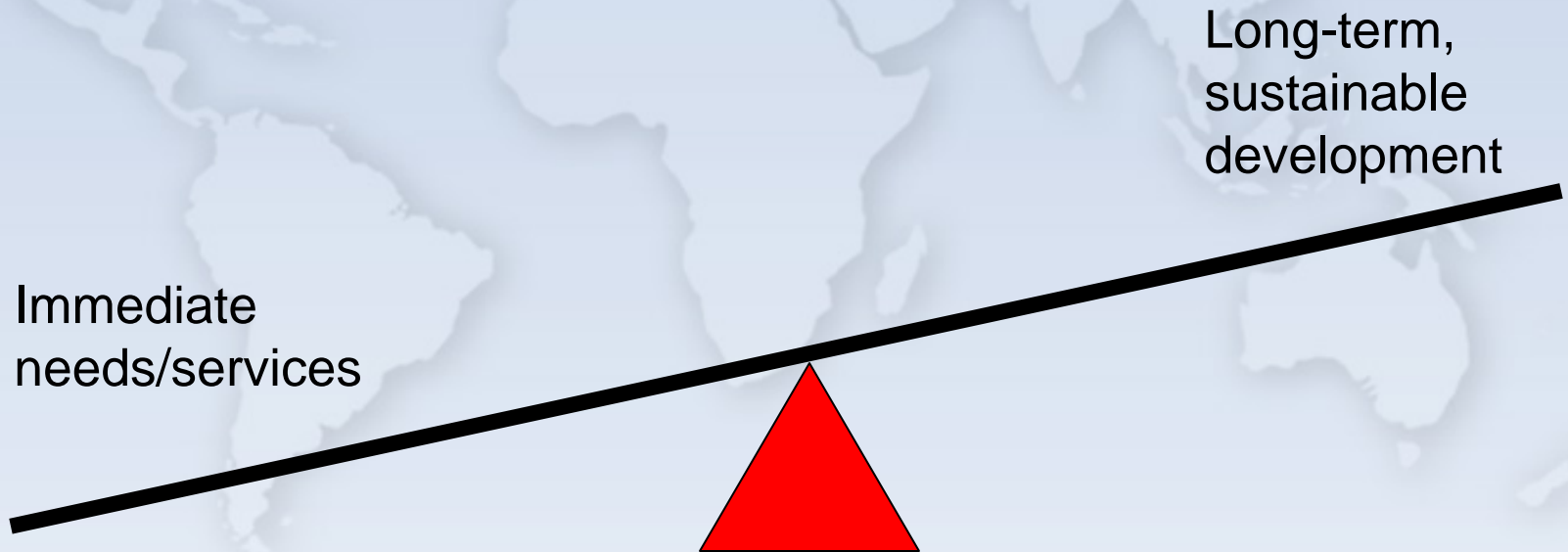
“Every day  
is a crisis.”



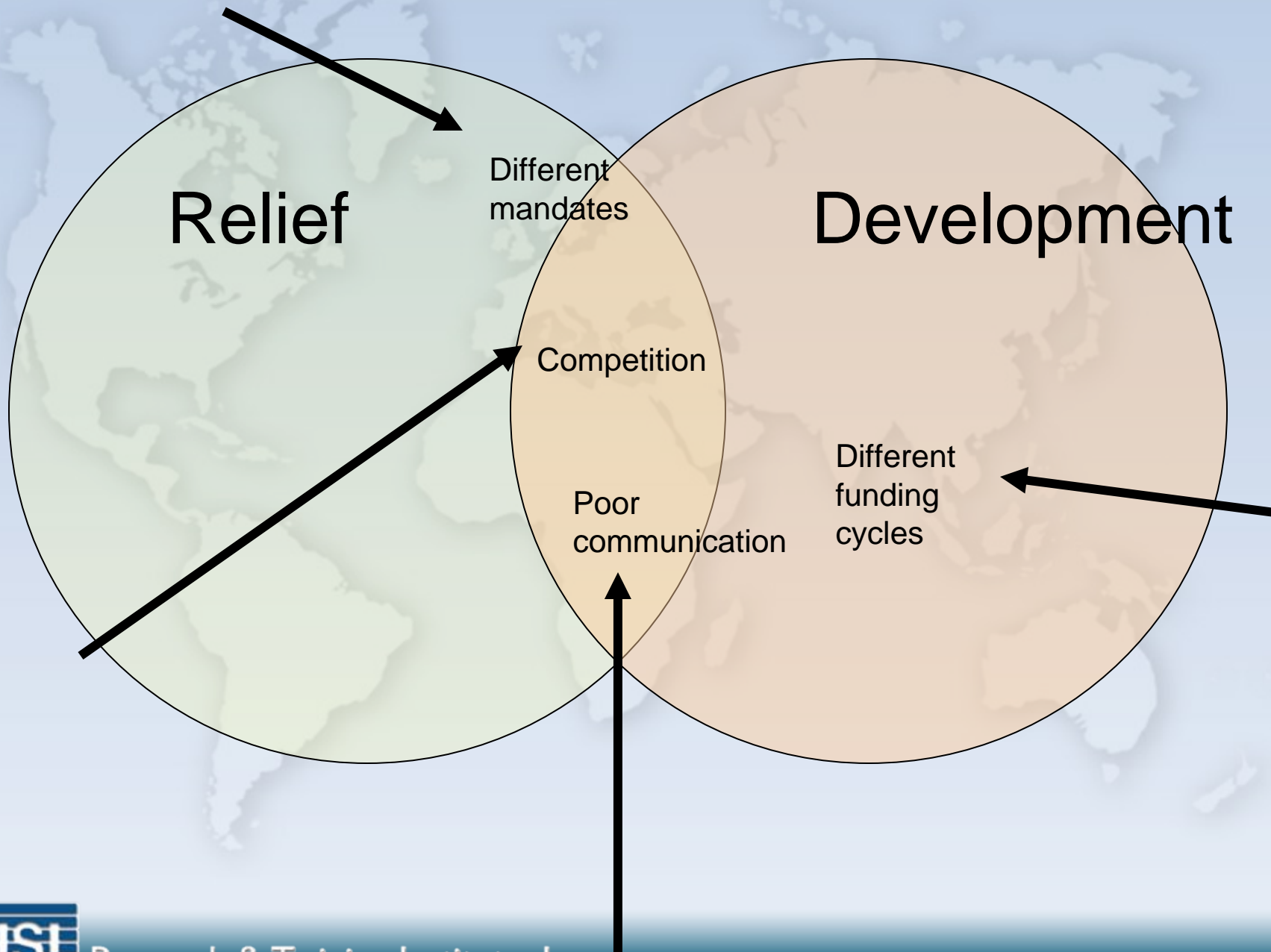
“Everything in reproductive health is a gap.”

Research & Training Institute, Inc.

# Striving for the perfect balance







# Pakistan



# Pakistan Initiative for Mothers and Newborns

- Build the capacity of the existing health system and,
- Foster a community-based approach to ensure a continuum of care for mothers and newborns.



# Utilize local resources

“Let me add here that JSI is establishing a very strong and effective infrastructure through local NGOs. From yesterday’s donor meeting, it was evident that there is a lack of coordination, and mostly donors are involved either directly or through the Health Department which has very limited capacity to reach out to IDPs... I believe our sub-grantee NGOs have the experience and most of them are IDPs themselves...”

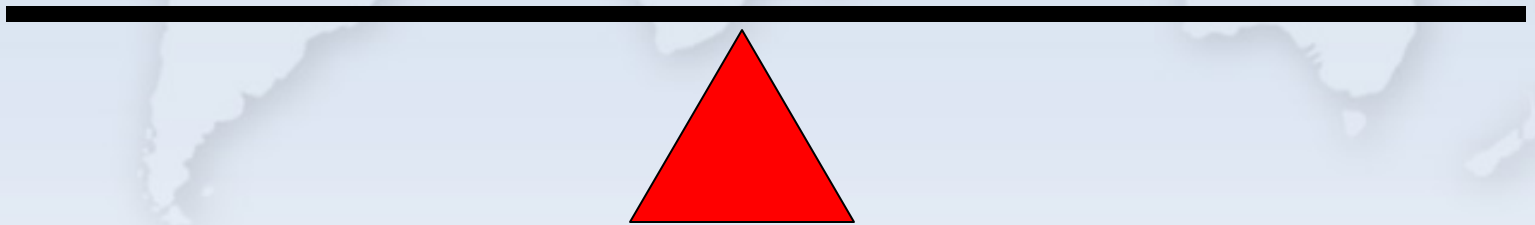




# Striving for the perfect balance

Immediate  
needs/services

Long-term,  
sustainable  
development



# Finding the right balance: what will it take?

- Flexibility of donor mechanisms and mandates
- Utilize local resources
- Need for earlier, more sustained partnership/capacity building

