

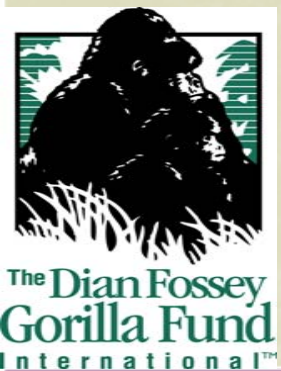


the Jane Goodall Institute
FOR WILDLIFE RESEARCH, EDUCATION AND CONSERVATION



USAID
FROM THE AMERICAN PEOPLE

Community-Centered Conservation Program in the Democratic Republic of Congo (DRC-CCC)



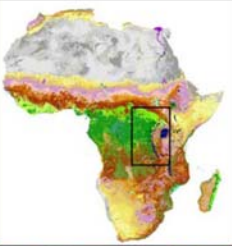
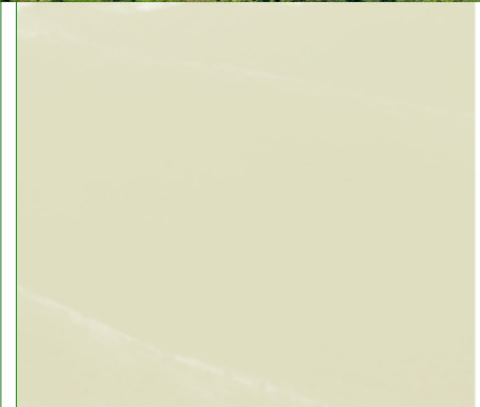
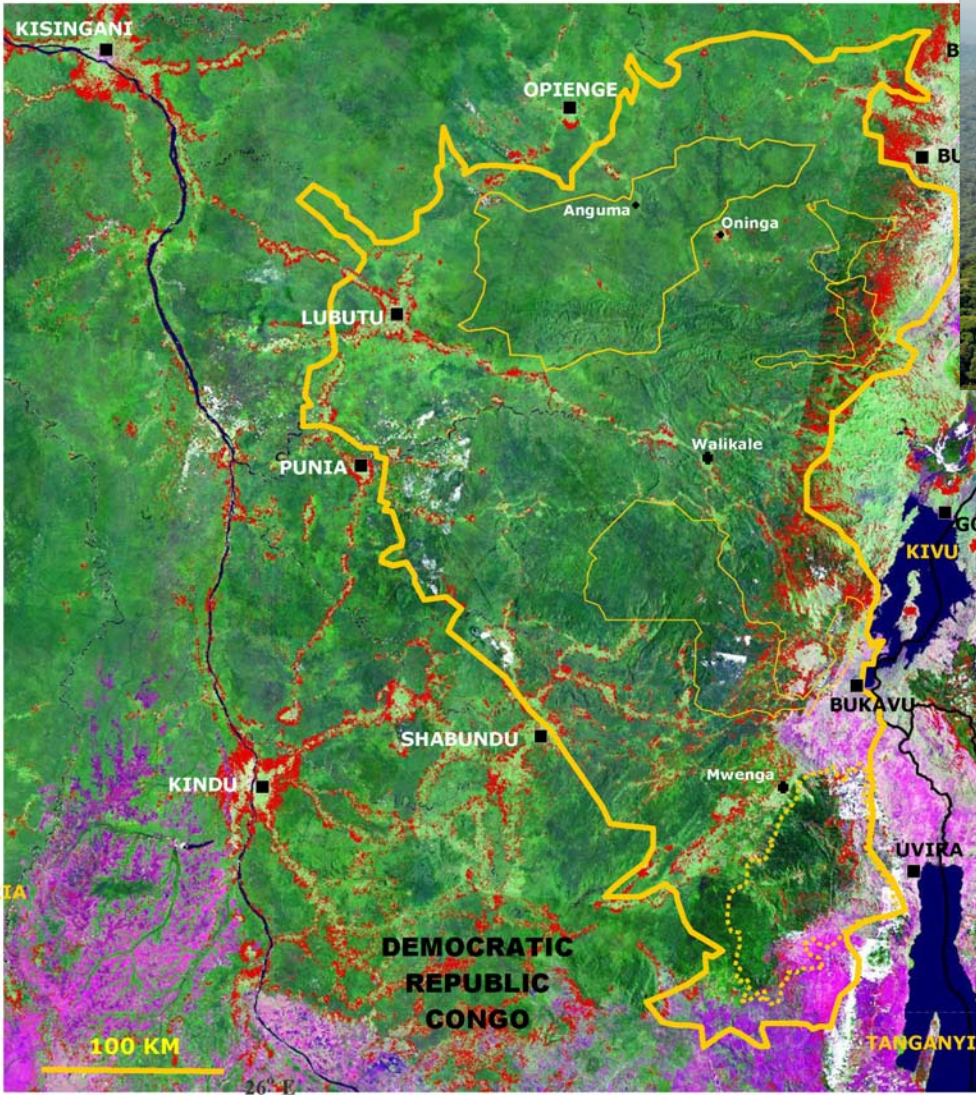


Landscape 10



**MAIKO TAYNA
KAHUZI-
BIEGA
LANDSCAPE**

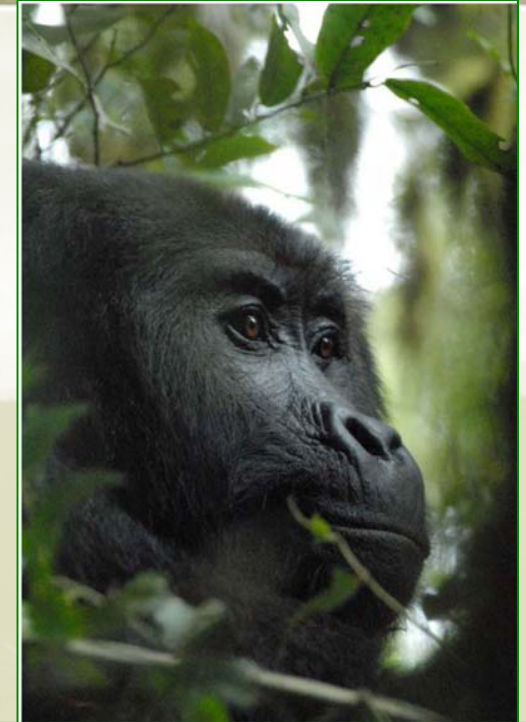
**CONSERVATION
INTERNATIONAL**





Landscape 10 Overview

- Rich in biodiversity/endemic species
- 90% of Eastern Lowland Gorilla range
- 80% of intact forest
- 50,000 sq km
- Availability of fresh water sources





Threats to Landscape 10

- Insecurity
- Extreme poverty
- Illegal mining
- Illegal hunting
- Charcoal extraction





DRC-CCC Program

Program Goal:

Sustainable local development in targeted zones in Graueri landscape which will contribute to conservation results in community reserves

- Promote activities that support environmentally sustainable economic growth
- Support a community-based Primary Health Care system
- Communities are partners



Supporting Economic Growth

Micro-Hydro Electric Power Plant in Kasugho village

- Community participation
- 35kw of electricity
- Local management committee
- Sustainability
- Income generating activities





Supporting Economic Growth

Agriculture and Livestock development

- Training
- Provision of farm inputs
- Demonstration units in fish farming and small livestock keeping





Supporting Conservation Efforts

Field equipment for 300 community eco-guards and park rangers

- Creation of 2.220.000 ha of Community Reserves
- 229 patrols (1,930 snares)
- 160 eco-guards
- 40% forest covered





Community Reserves

Legend

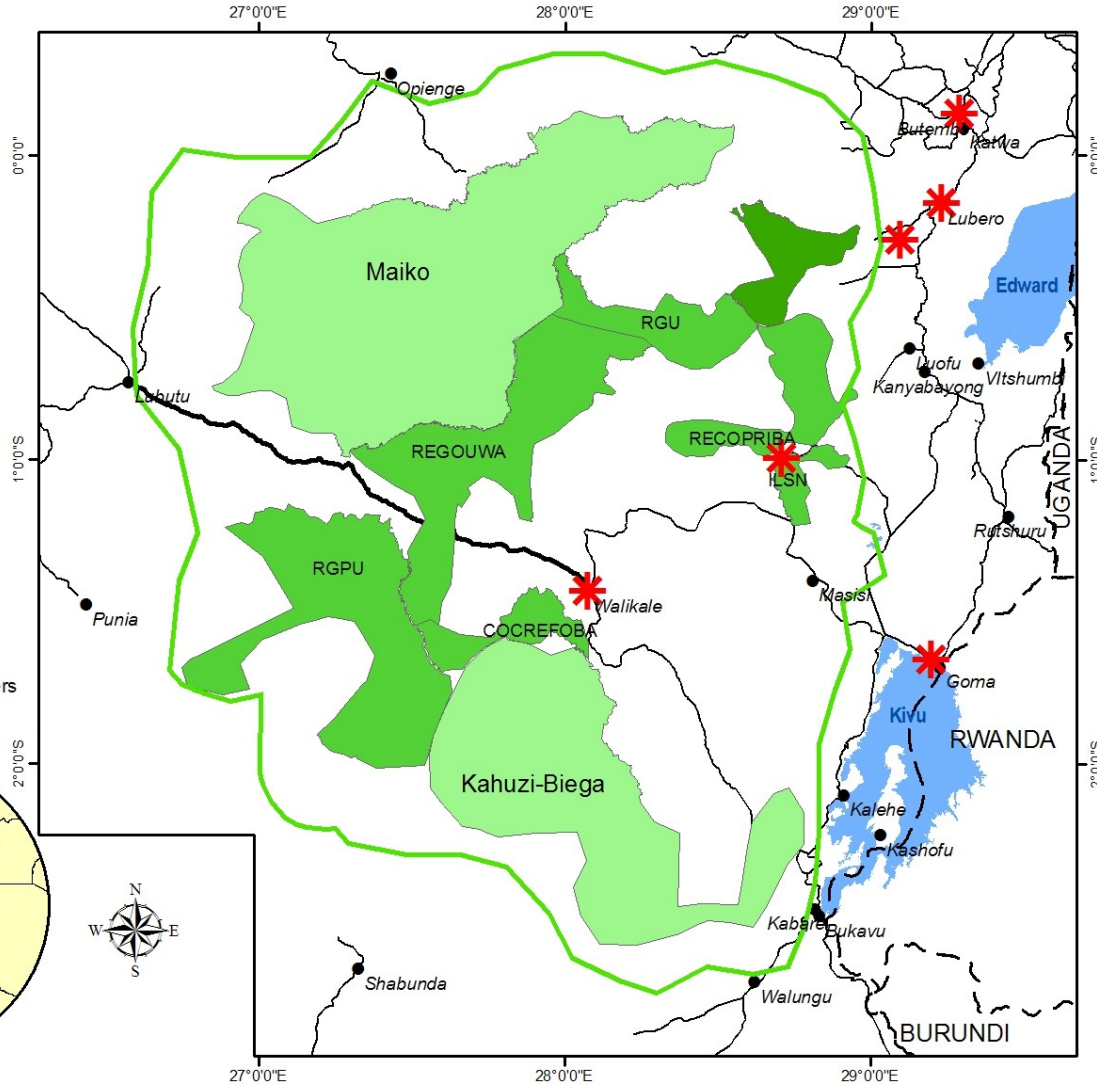
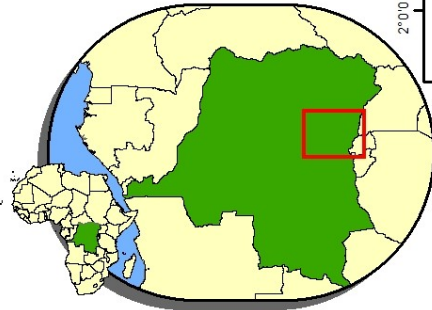
- JGI activities
- Developing community reserves
- Tayna Community Reserve
- National Parks
- Landscape 10

Cities & Towns

- Cities & Towns
- Paved road
- Dirt road or path
- Lakes
- International borders



the Jane Goodall Institute





Implementing a Health Program

Malaria Prevention

- Provision of mosquito nets for mothers and their under-five years old children (6,500)
- Distribution of anti-malaria doses for the 3 Health zones (10,000 doses)



Implementing a Health Program

Family Planning

- Training of Health Care Providers
- Provision of Family Planning Methods
- Rehabilitation of Health Services
- Sensitization on FP (radio/theater/CBDAs)
- Provision of supplies for health centers
- Monitoring and supervisory visits





Implementing a Health Program

Health zones	Health facilities	Total population	FP/RH Target/ Reproduction age women
3	71	580,289	123,073

Family Planning Results (2004 – 2008)

- 41 training sessions
- 894 service providers trained
- 6 health facilities renovated
- 236,47 doses of FP methods provided to Health Zones
- 489 CBDA's
- 41,256 individuals counseled on FP
- 15,818 new acceptors of FP



Lessons Learnt

- Achieving program results is possible even in a conflict environment
- Community governance of resources is key
- Working with the traditional community-based leaders provided entry into the communities
- Community-based volunteers are key in educating and mobilizing communities
- Use of media for sensitization on family planning and conservation
- Partnerships are important





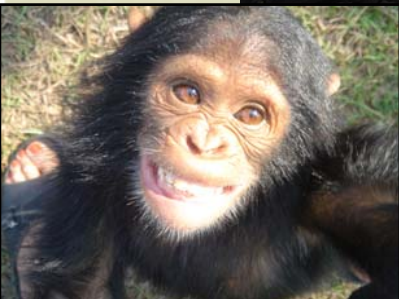
Program Challenges

- Instability/Insecurity in Eastern DRC
- Lack of infrastructure (road & communication)
- Health facilities are in deplorable state
- Lack of Government Support & Provision of Social Services
- Religious & cultural barriers





Thank You





Thank You

- Food and Agriculture Organization
- USAID
- The Jane Goodall Institute
- Population Services International
- Dian Fossey Gorilla Fund International
- Conservation International
- UGADEC
- Institute of Reproductive Health (Georgetown University)
- National Reproductive Health Program