



Un autre Sahel est possible !

[www.cilss.bf](http://www.cilss.bf)

# *Cereals Situation in the Sahel*

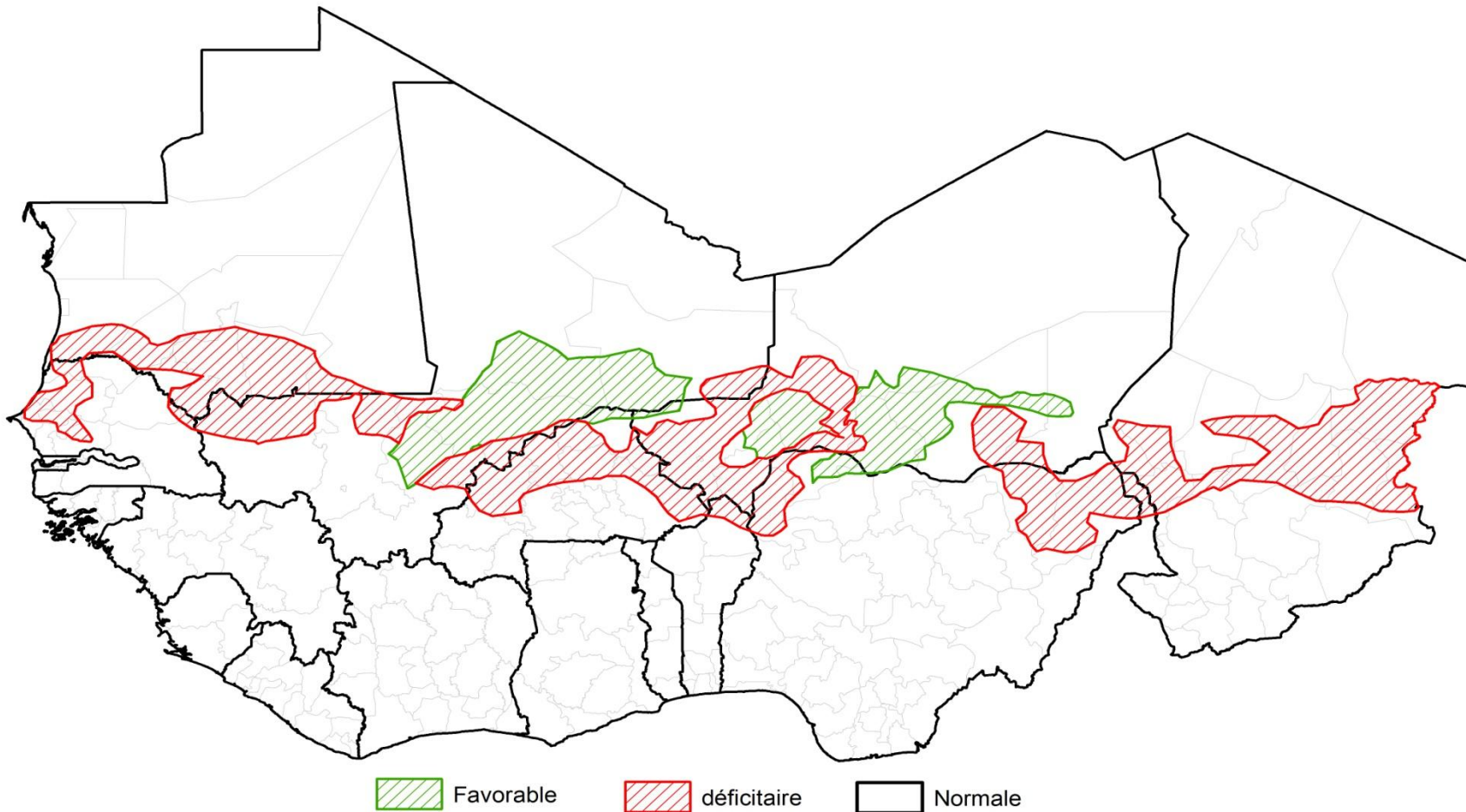
**John Staatz**  
Michigan State University





# Bilan campagne agropastorale 2011-2012

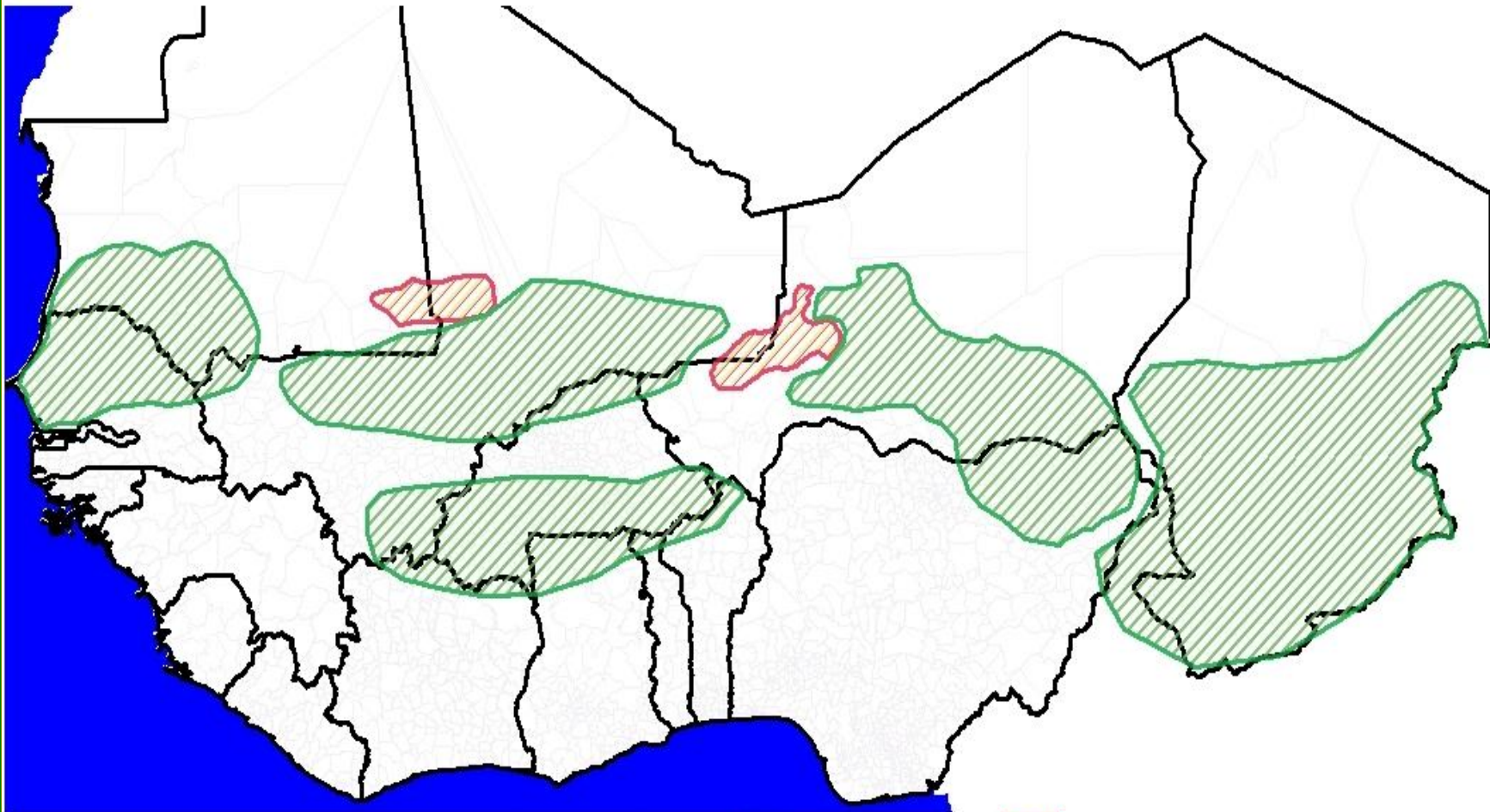
Synthèse des indicateurs de suivi de la végétation : ICN, VCI, sNDVI





# Rappel du bilan campagne agropastorale 2010-2011

Synthèse des indicateurs de suivi de la végétation : ICN, VCI, sNDVI



□ Limites administratives   □ Globalement Normale   ▨ Très Favorable   ▨ Déficiente



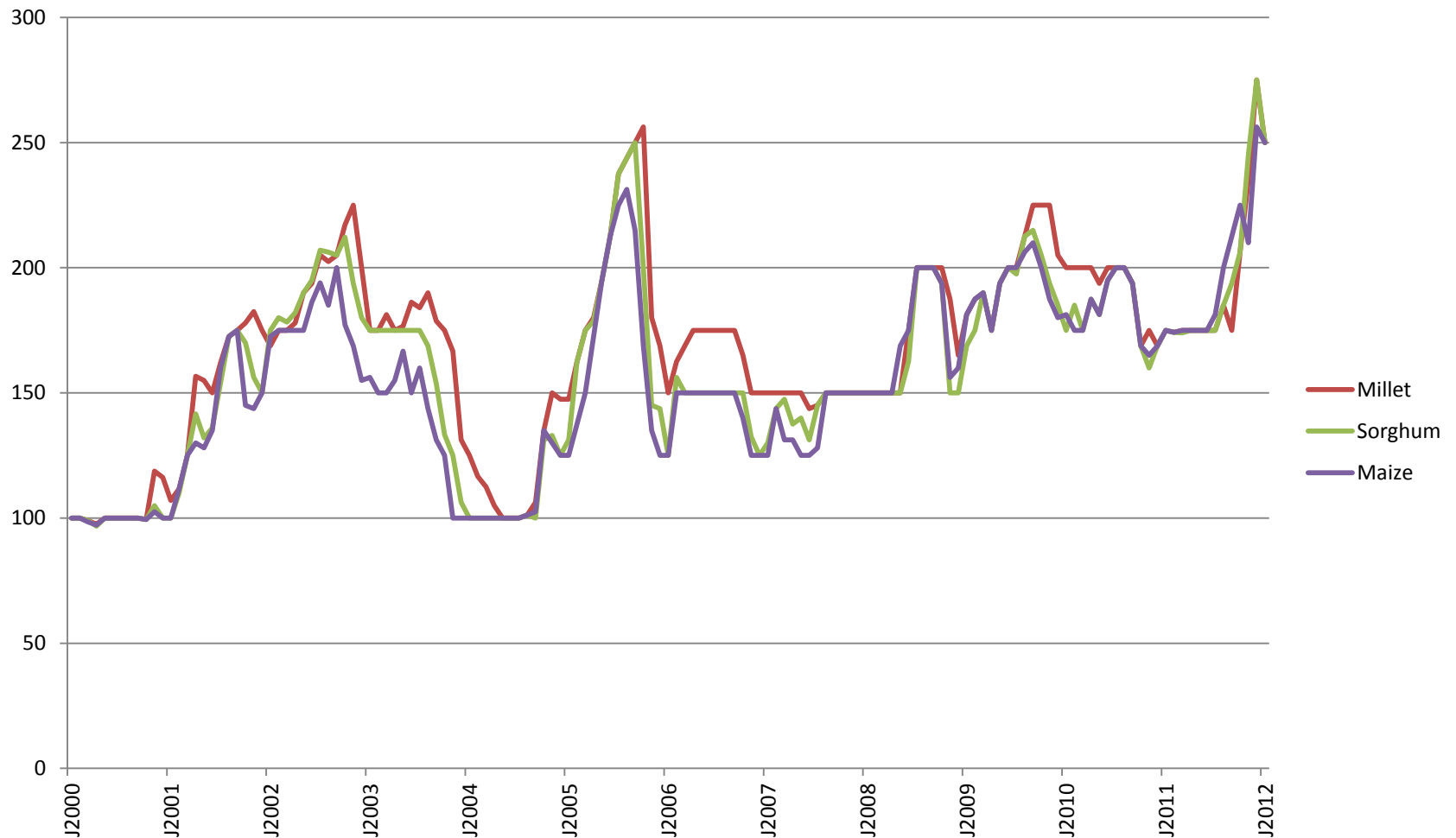
# Production par céréale

Régions		Production (milliers de T) 2011-2012	Ecart % 2010-2011	Ecart % 2006-2010
Cultures				
Riz	Ensemble	12 441 729	-5,70%	19%
	Sahel	2 888 019	-25%	12%
Maïs	Ensemble	17 474 615	0,24%	22%
	Sahel	2 247 071	-22%	-6%
Mil	Ensemble	10 810 673	-16%	24%
	Sahel	6 484 127	-22%	-6%
Sorgho	Ensemble	14 546 508	-12%	0%
	Sahel	4 995 450	-28%	-6%

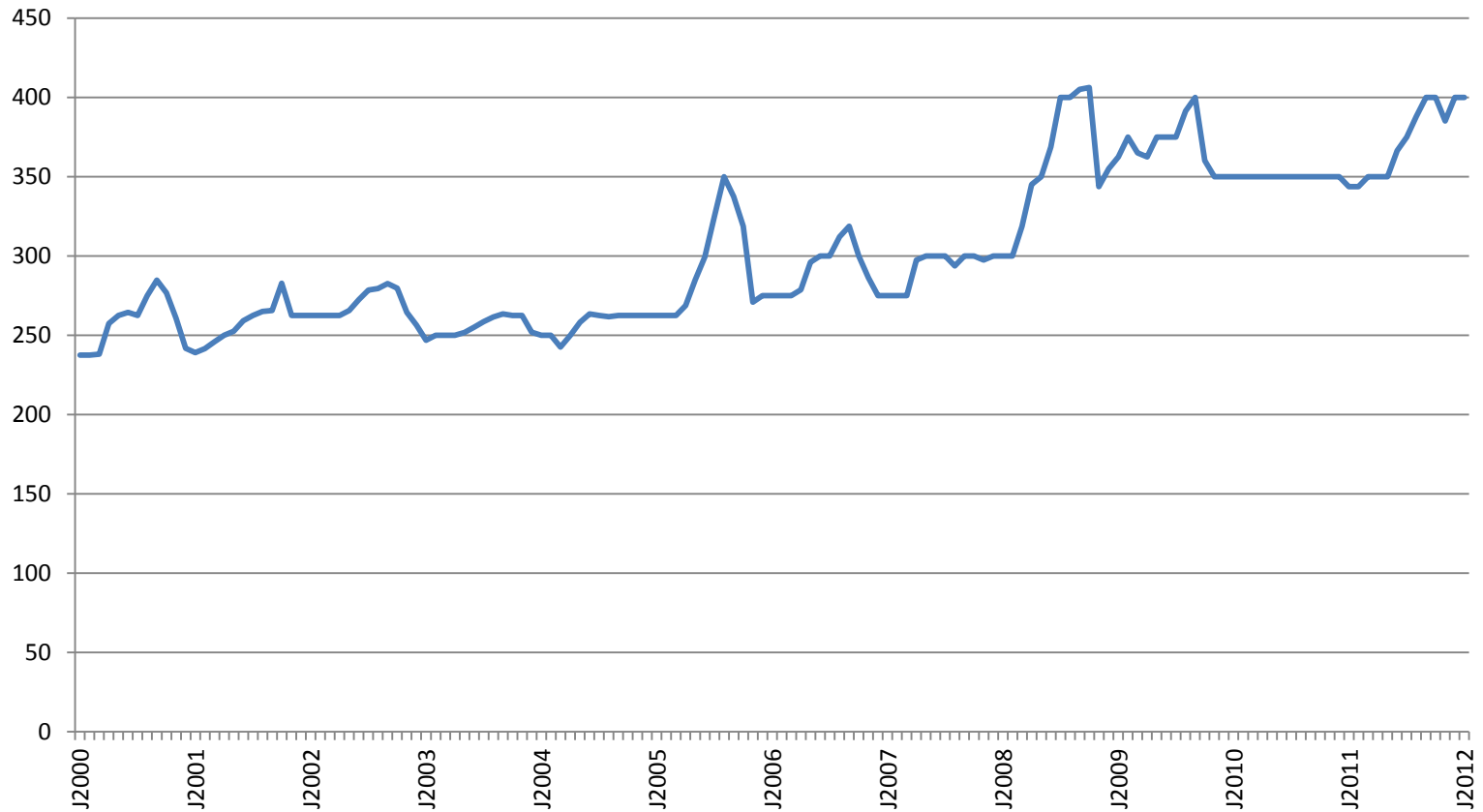
Un autre Sahel est possible !

[www.cilss.bf](http://www.cilss.bf)

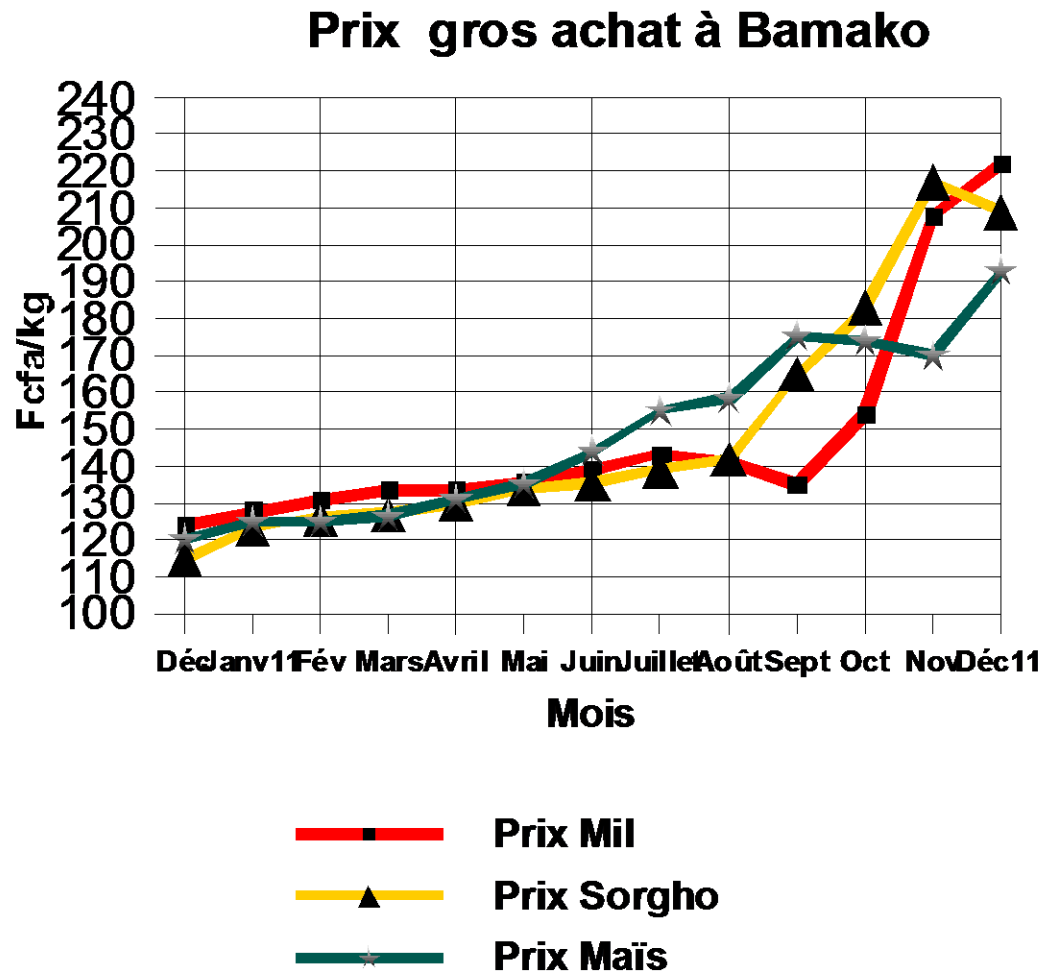
# Retail Coarse Grain Prices in Bamako, 2000-2012 (FCFA/kg)



# Retail Local Rice Prices in Bamako, 2000-2012 (FCFA/kg)

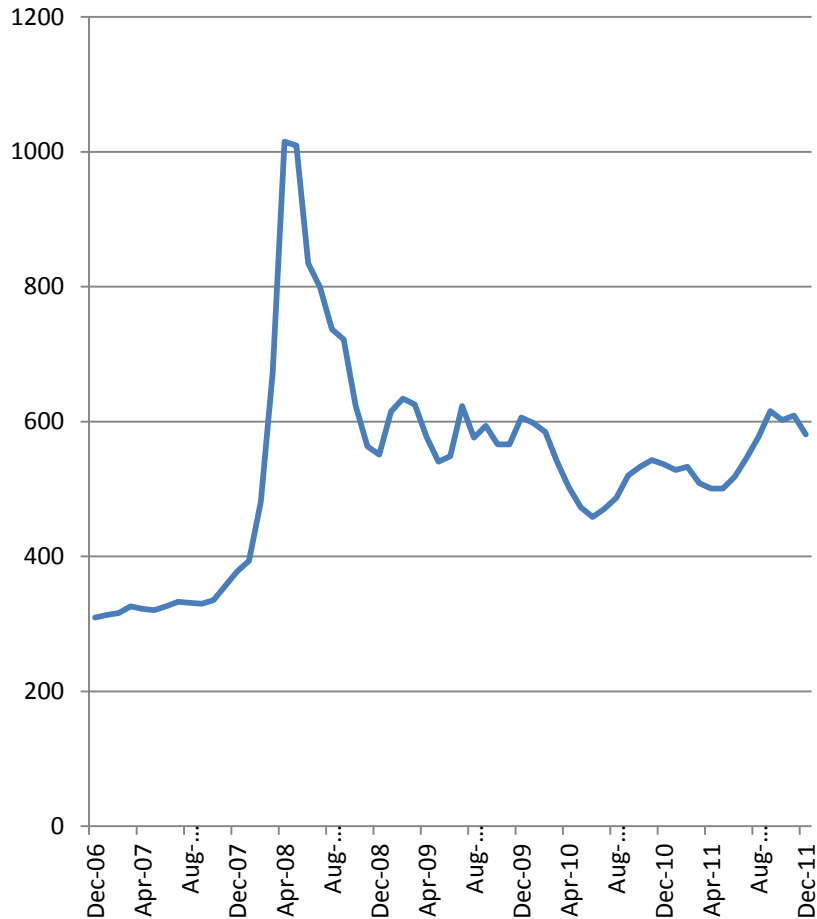


# No seasonal decline in cereal prices



# Evolution of world rice and wheat prices (US \$/mt)

## Rice – Thai 5% broken, FOB Bangkok



## Wheat – US No. 1 hard red, FOB Gulf

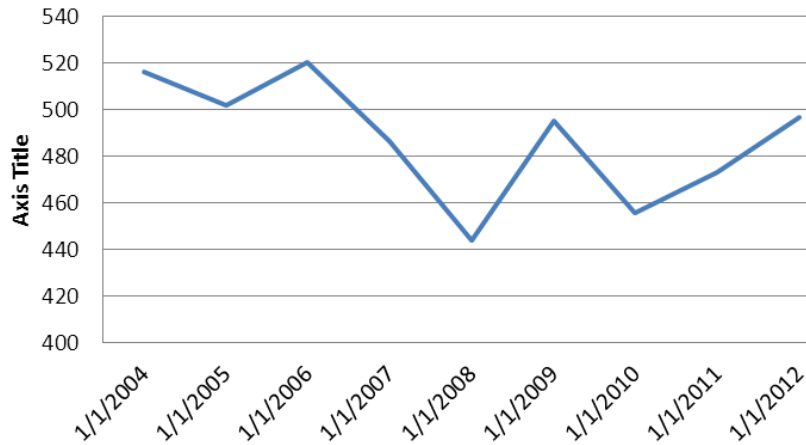


Source: IMF



# The changing value of the CFA F

### US \$/CFA F Exchange Rate



### Niara/CFA F Exchange Rate

