



**INTERNATIONAL INSTITUTE OF RURAL RECONSTRUCTION**

# **Community Outreach & Engagement in China Environmental Health Project**

**钟雅薇 Amelia Chung**  
**中国项目负责人 China Program Coordinator**  
**国际乡村建设学院 (IIRR)**

**China Environment Forum**  
**Woodrow Wilson International Center for Scholars**  
**Washington DC**  
**November 14, 2007**

# Hydrogeology



**Social Science**



# Characteristics of Solutions for Development

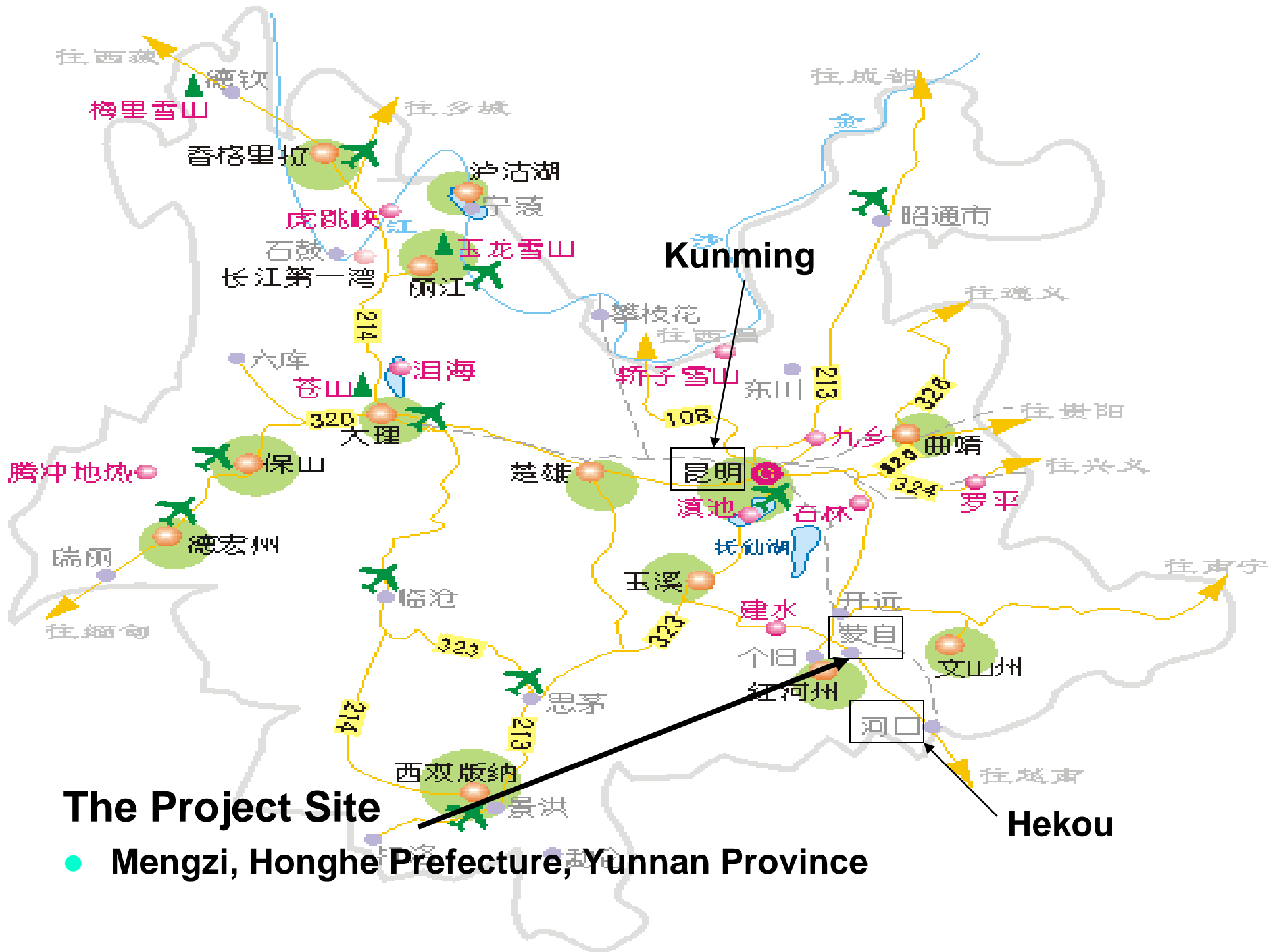


## **PARTICIPATION**

“The poor has a ‘culture of silence’, they have muted voices, they do not have access to resources, and do not participate in the development process.”

## IIRR's Roles:

- Familiarize project partners on concepts of **community participation and mobilization**
- Assess **training needs and conduct training workshop** to develop Chinese NGO partners' capacities in engaging communities
- Design, plan, and implement **community outreach and engagement activities** with local partners



**The Project Site**

● Mengzi, Honghe Prefecture, Yunnan Province

**Hekou**

## Honghe Hani & Yi Autonomous Prefecture

- **Hani** and **Yi** ethnic minority groups are dominant
- **Hani** inhabits mainly in the Southwest; **Yi** in other areas



- **Hani** is renowned for its ethnic dance and music; they are both included in the Chinese national list of cultural heritage

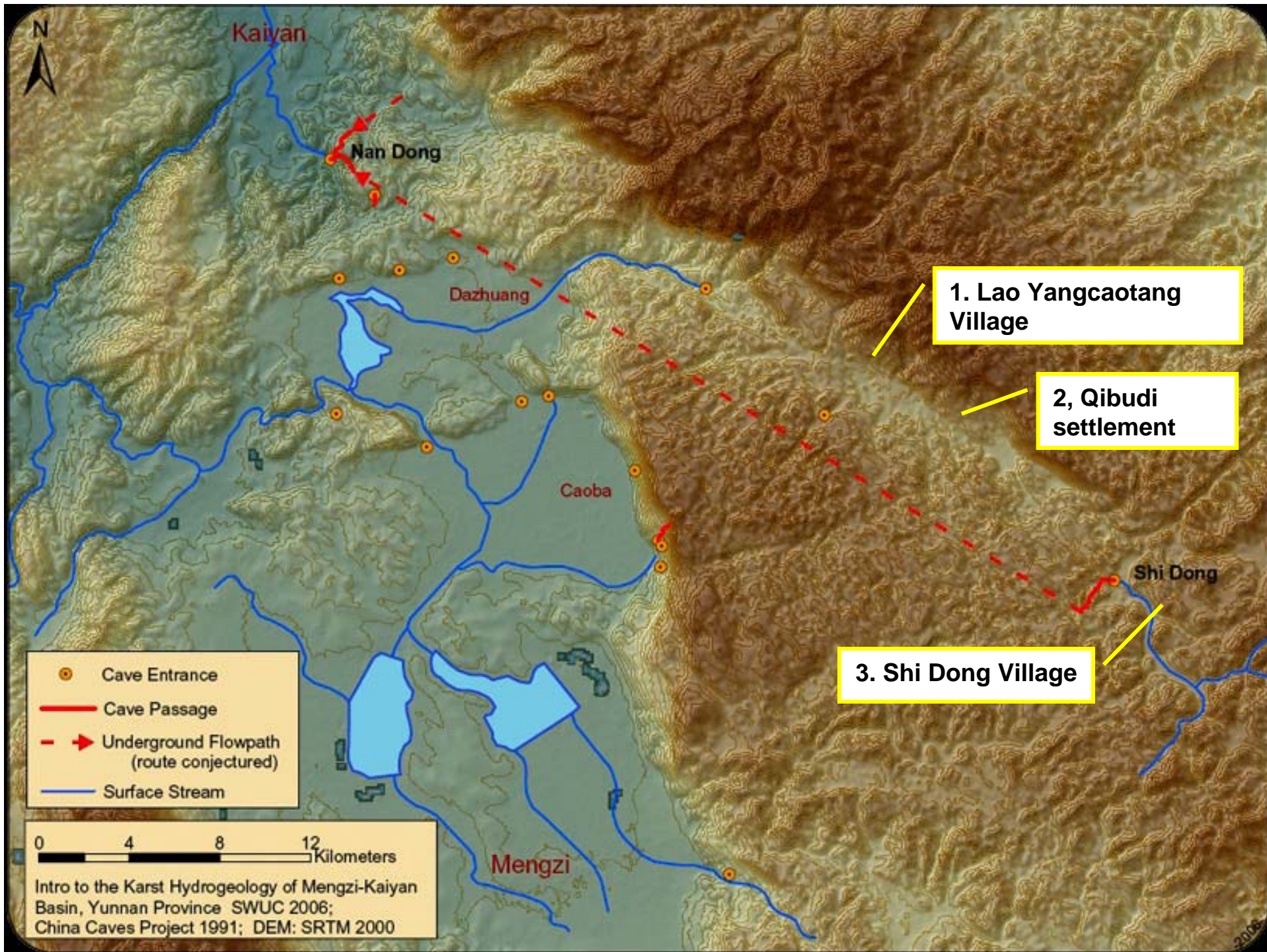


## Mengzi County, Honghe Prefecture

- Total population 390,000; 193,000 of them minorities
- Yi people shaped the region's history, as the earliest settling group
- Three sub-tribes of Yi, each with different cultures and dialects; widely dispersed in the county









# 1. Lao Yangcaotang Village

- Located on the plateau
- 1 of the 10 villages forming an administrative village with population of ~3,000
- Tobacco, corn and sweet potatoes
- RMB1,200 (US\$160) per capita income



- One of the two villages that does not have tap water
- Partially funded by the government, the 25 m<sup>3</sup> cisterns hold and store rainwater collected during rainy season







- Closest water source is a small reservoir with muddy water five minutes away from houses



## 2. Qibudi Settlement

- Relatively dry area with scattered holes that water flows into underground
- Used to have water around 1958 but area has been dry ever since



## 2. Qibudi Settlement

- Surplus labor forces of young men who are reluctant to go to surrounding towns or cities to work





### 3. Shi Dong Village

- A cluster of settlements in an area where there is surface water for living and irrigation





### 3. Shi Dong Village

- Villagers grow enough food for their own consumption
- Large area of land is used to grow cash crop (tobacco); per capita income is RMB6,000 (or US\$800)
- Farm in Summer, work elsewhere in Winter



## How do we engage communities

- Participatory Rural Appraisal (PRA) and Participatory Learning and Action (PLA) tools
- Focus group discussions, multi-stakeholders dialogues, technical work team etc.
- Shared situational analysis, joint planning, baseline and other data collection, project progress monitoring and evaluation
- **Outsiders only act as facilitators**

## **Local NGO Partner:** **Honghe Prefecture Nationality Studies Institute**

- **Established in 1984**
- **Technical supervisory agency: Yunnan Academy of Social Science since 1992**
- **Government supervisory agency: Prefecture Civil Affairs Bureau**
- **Main activities include:**
  - research, restoration, translation, and compilation of classical books and manuscripts;
  - editing and publishing reading and teaching materials in Chinese and minority languages;
  - conducting surveys and studies on traditional cultures, socio-economic and development issues of the prefecture

# **Roles of Honghe Prefecture Nationality Studies Institute**

- Participating in the IIRR-facilitated training to enhance their capacities in community mobilization
- Undertaking community engagement activities during different project stages with project team
- Providing linkage and liaison between project team and local communities of concern