

Implementing and scaling an integrated Population, Health and Environment model in Uganda and DRC

Africa in Transition, The Wilson Centre, 16th April 2019

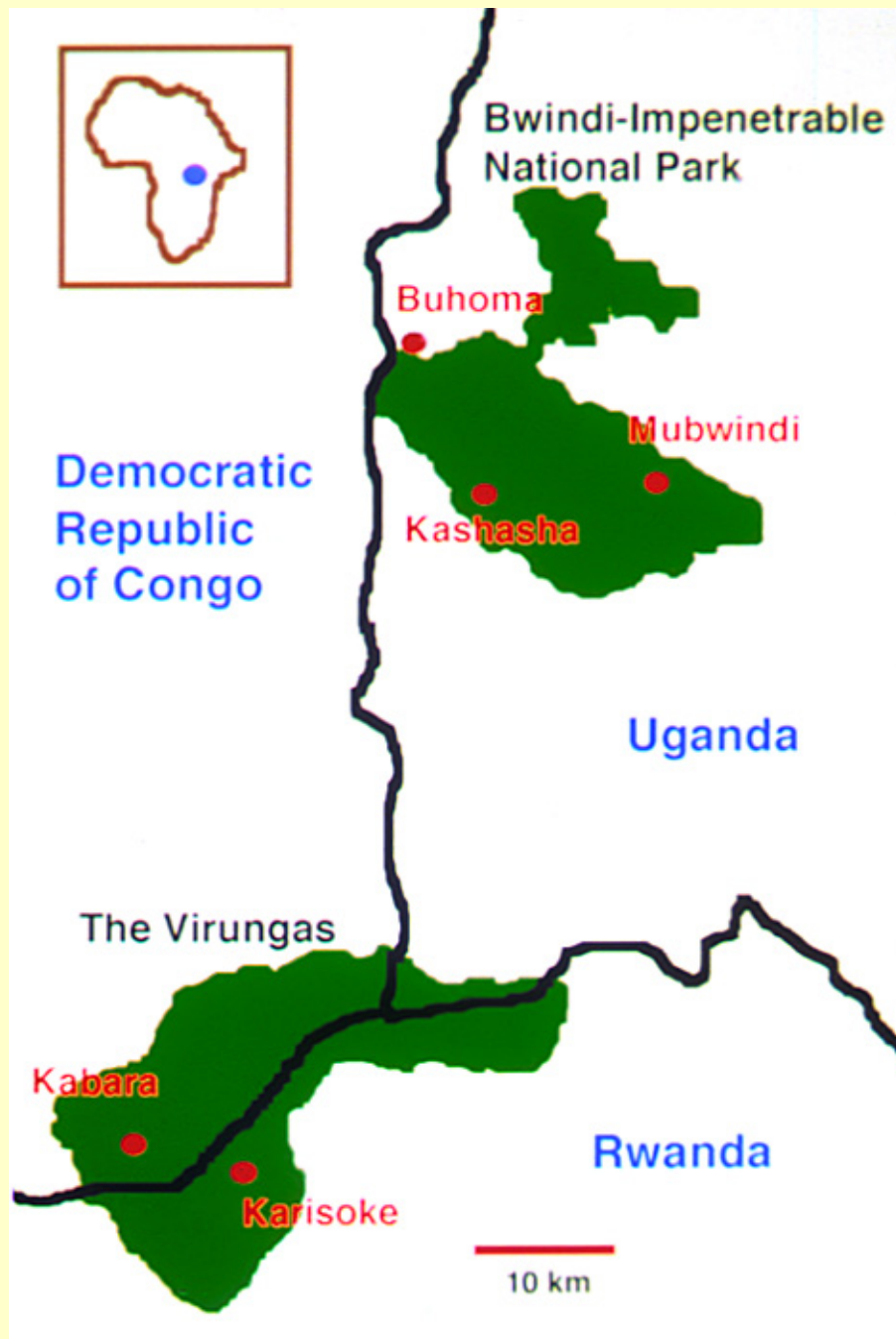


Dr. Gladys Kalema-Zikusoka

Founder and CEO, Conservation Through Public Health

National Geographic Explorer, 2018 Sierra Club Earthcare Award Winner





Habitat loss and poaching



Disease Transmission







Conservation Through Public Health

We keep gorillas healthy and their habitats secure





OKWERINDA



KUTATURIZA

ENDWARA

ENGAGI NARI

ZO KU TUTURIZA

PREVENTION

AND

CONTROL OF



DISEASE

TRANSMISSION

BETWEEN HUMANS

AND GORILLAS

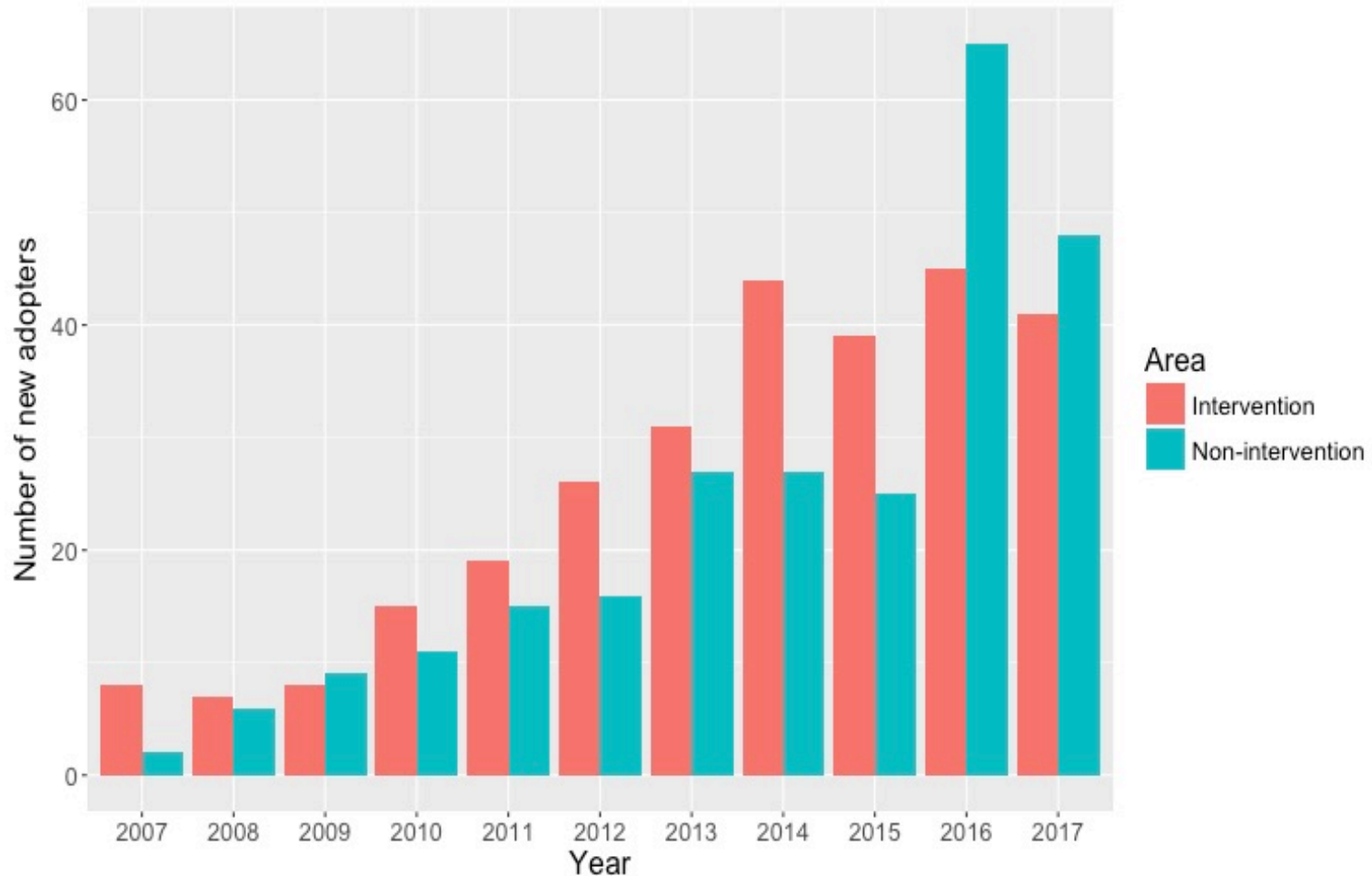
Train Village Health and Conservation Team (VHCT) community volunteers



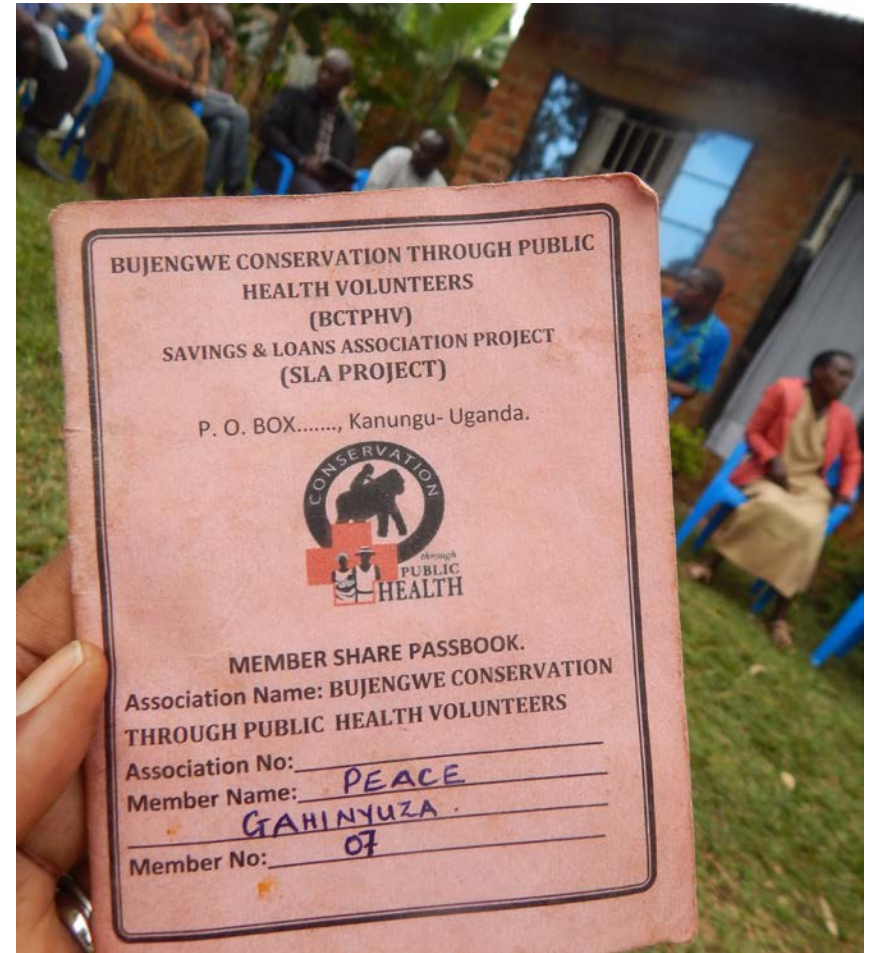
Village Health and Conservation Teams administer family planning injections



Figure 4: New adopters of any family planning method in the intervention area preceded non-intervention areas based on recall data from a household survey (research conducted by Oxford University and funded by the Darwin Initiative)



Sustain Village Health and Conservation Teams with group livelihood projects



Gorilla Conservation Coffee – Social enterprise of CTPH

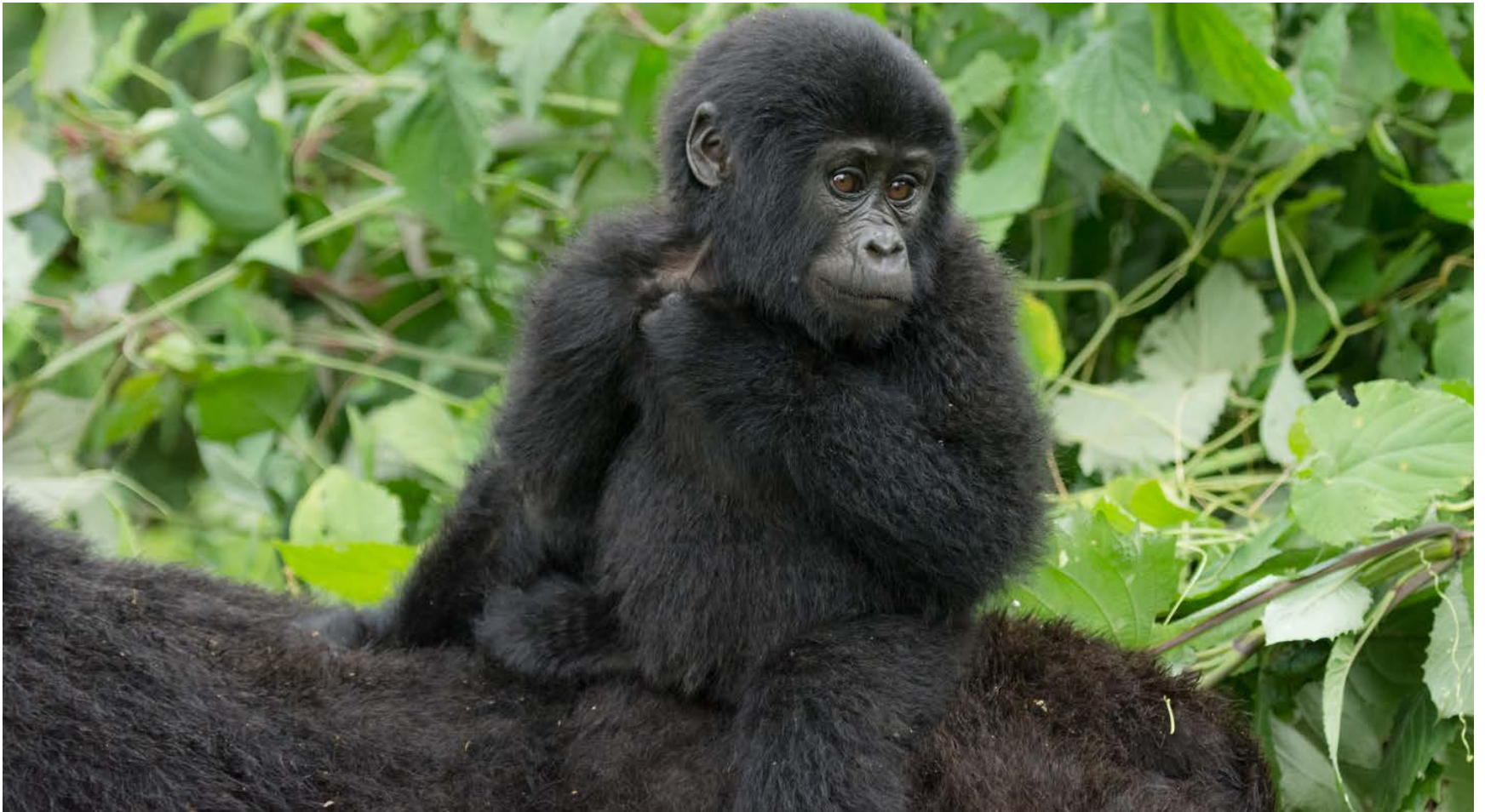


Impact

Increase in mountain gorilla population from 780 to 1000 since 2003

- Gorillas are now protected in community land
- Three fold increase in homes with hand washing facilities
- Reduced human related disease outbreaks in the gorillas (scabies)
- Reduced gorilla exposure to human and livestock diseases (giardia)
- Increase from 22% to 67% women on family planning, above increase from 30% to 45% current national average in rural areas

Expanding the approach to other gorilla habitats and biodiversity hot spots



Issues at Scale Up Locations

Budongo Forest Reserve

- Inadequate family planning supplies
- Very few VHTs
- No tourism revenue from National Forestry Authority
- Poaching
- Consumption of primates and other species
- Epilepsy (high levels)
- Zoonotic diseases
- Timber cutting

Mt. Elgon, Uganda

- Bad roads
- Poor community and National Park relations
- Cattle grazing in the park
- Encroachment (building or growing crops in the park)
- Landslides
- Zoonotic disease transmission (wildlife–human)

Virungas, DRC

- Insecurity
- Contraceptives not free

Scaling to Mount Elgon and Budongo Forest



CTPH Uganda Poverty and Conservation Learning Group (UPCLG) policy brief with IIED

- **To Donors:** Integrating healthcare in management of wildlife and natural resources contributes to conservation and sustainable development
- **To Uganda Wildlife Authority:** Engaging community health workers in conservation outreach, is an effective way of achieving conservation and sustainable development outcomes
- **To Ministry of Health:** Enrolling all government supported Village Health Teams as Village Health and Conservation Teams enables efficient delivery of social services with additional benefits for the environment.
- **To NGOs:** The VHCT model is sustainable through regular engagement of the community volunteers, and well managed group income generating projects and Village Saving and Loan Associations
- **PHE directly contributes to ten SDGs:** 1, 2, 3, 4, 5, 6, 8 10, 15, 17

Thank You very much – The Wilson Center



www.ctph.org

Facebook: Conservation Through Public Health

Twitter: @CTPHuganda; @doctorgladys

Dr. Gladys Kalema-Zikusoka gladys@ctph.org