



INTEROCEÁNICA
SUR


January 2008

Interoceanica Sur Highway



Social reality

Span 2 - Department of Cusco

- 
- A photograph of two young girls in traditional Peruvian clothing. The girl on the left is smiling and looking towards the camera, wearing an orange and yellow patterned shawl. The girl on the right is looking slightly away from the camera, wearing a red and orange patterned shawl, and has a small blue object in her mouth. The background is a plain, light-colored wall.
- 90% of the population of Quispicanchi – Cusco is poor or extremely poor.
 - High index of natal morbidity.
 - Lowest indices of education achievement.
 - 47% of the population is less than 12 years old and suffer chronic malnutrition.
 - 82% of the population is dedicated to the agriculture and cattle breeding activity, basically for their own consumption.

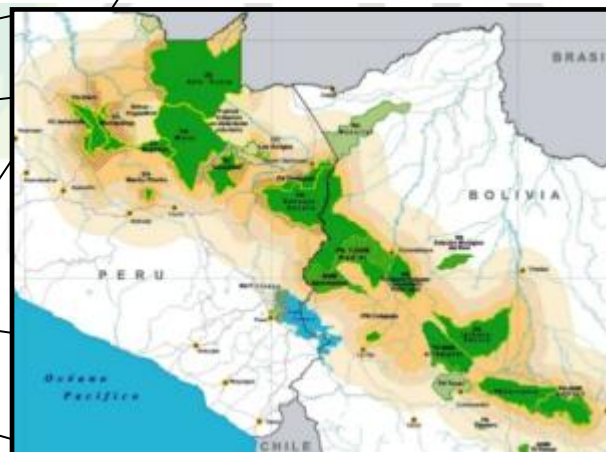
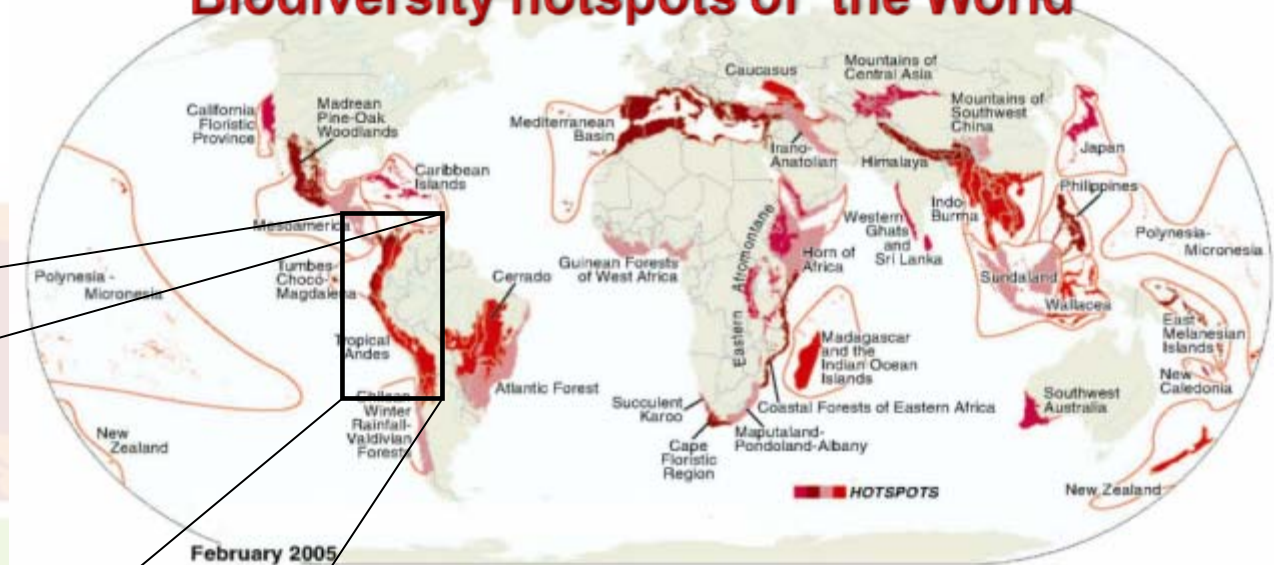
Social reality

Span 3 - Department of Madre de Dios

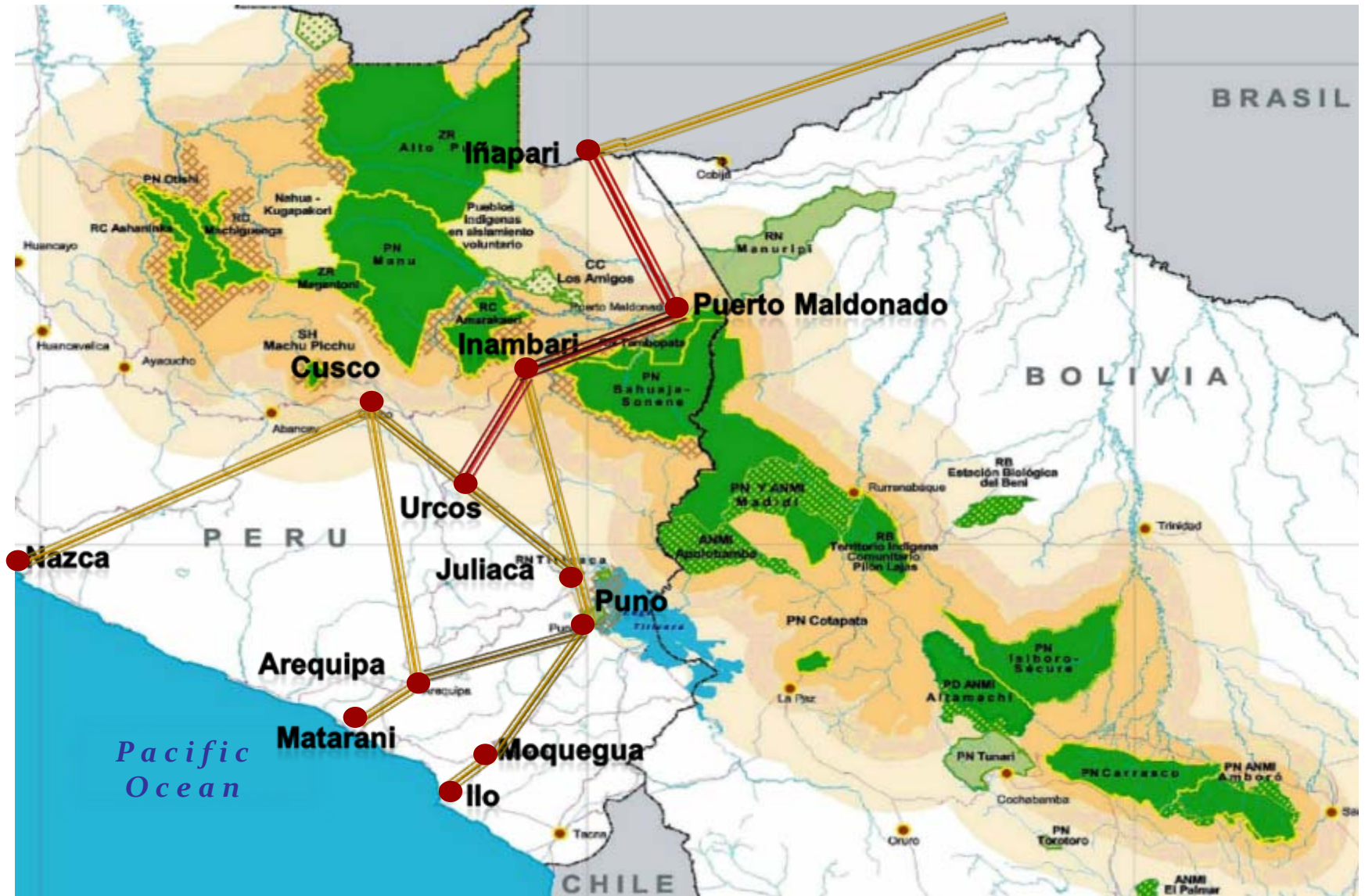
- 
- A young child with dark hair, wearing a white t-shirt and light blue shorts, is walking away from the camera on a dirt path. The child is carrying a black bag over their shoulder. The path is uneven and surrounded by dry, brownish vegetation.
- 90% of the population of Madre de Dios is poor or extremely poor. 30% is less than 12 years old with a 21% rate of malnutrition.
 - 65% of the population of all the department has unsatisfied basic necessities.
 - The main causes of morbidity are contagious infectious diseases.
 - Economy is based on primary activities: extraction of wood, nuts, fish and gold mining.

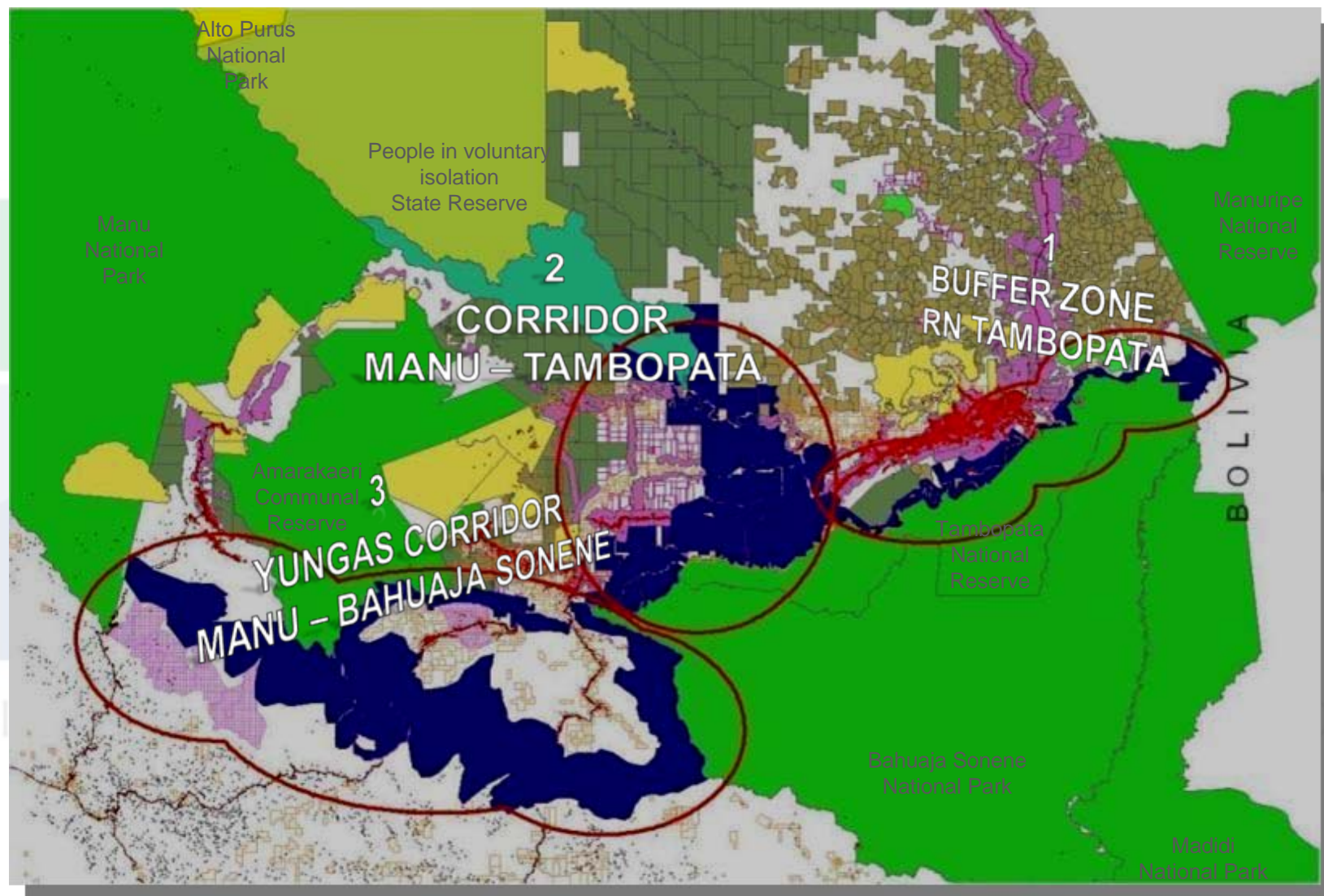
Biodiversity hotspots of the World

Tropical Andes Hotspot

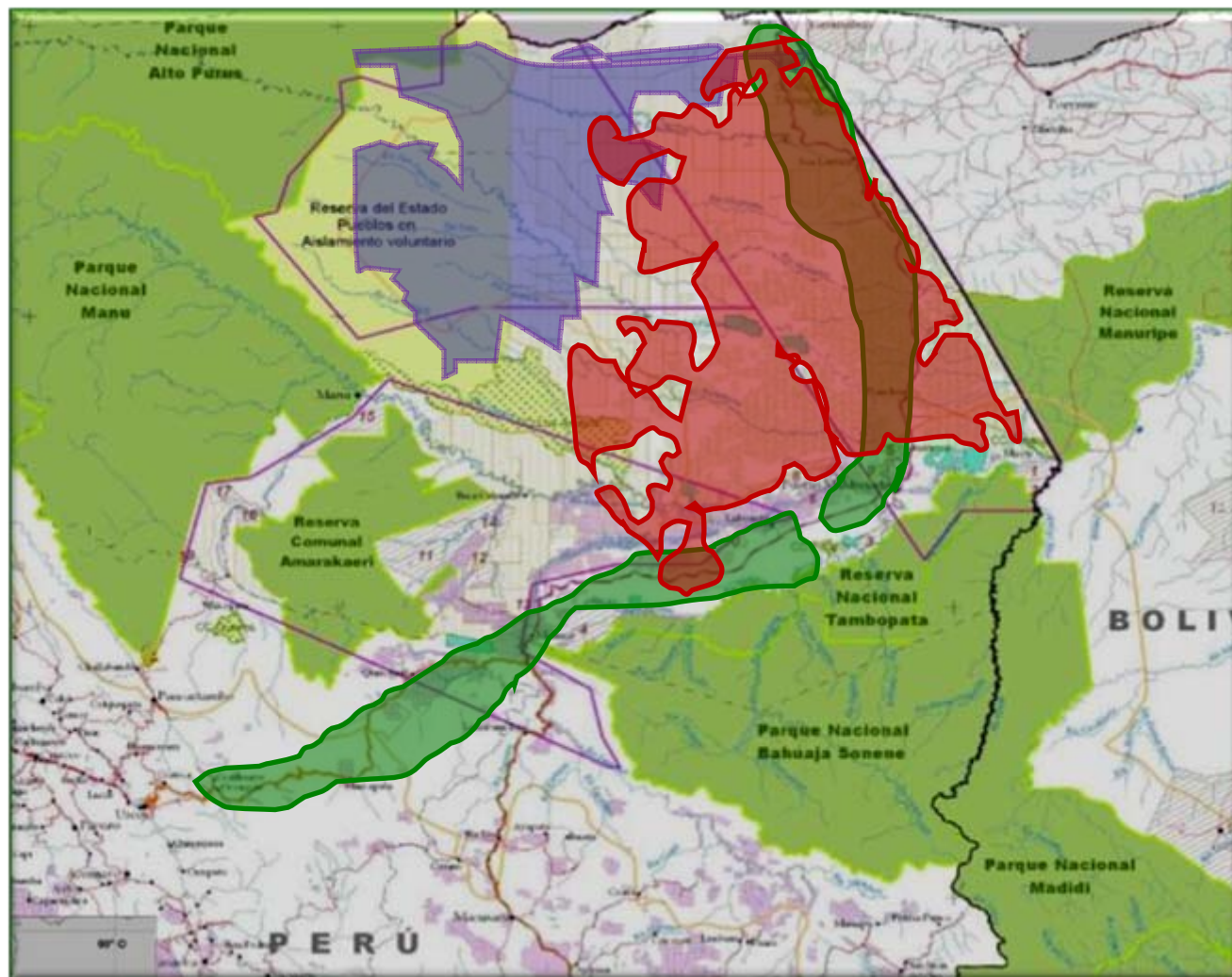


Vilcabamba Amboro Conservation Corridor





Mid – Term Intervention Design



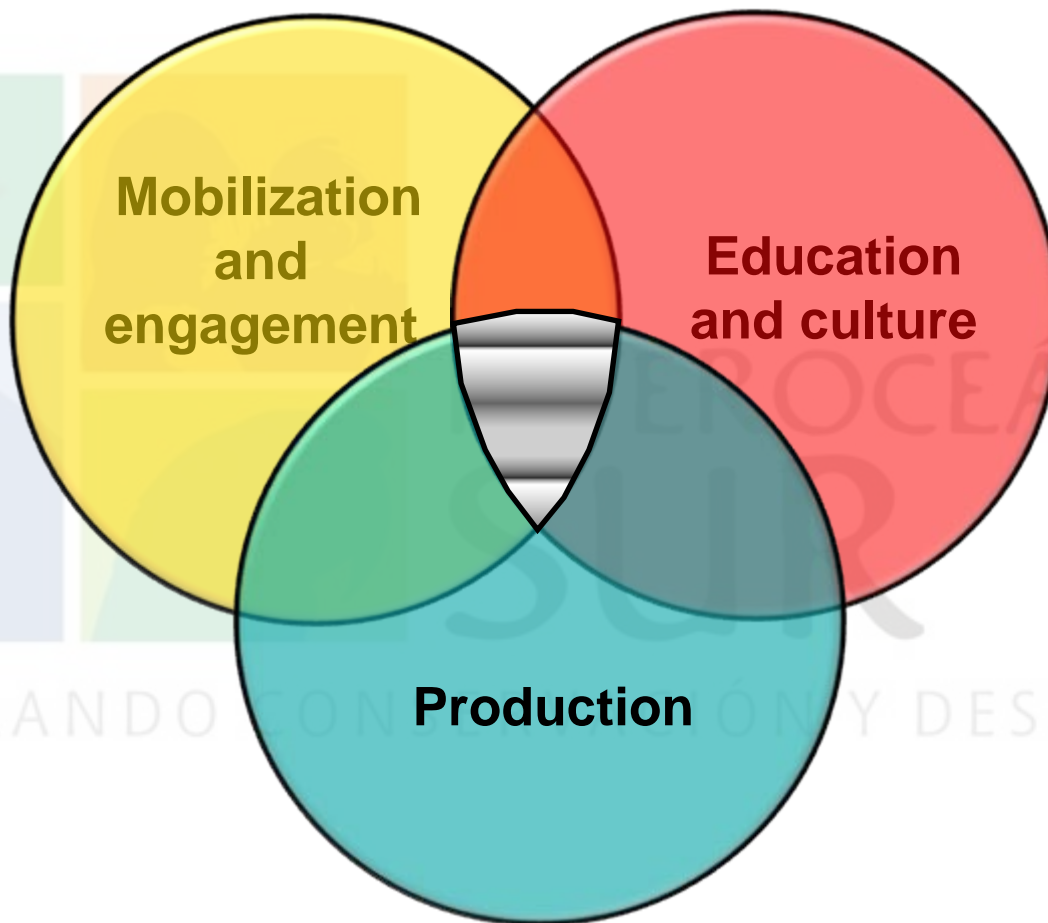
Building up the programme in the region through existing initiatives:

- Timber
- Brazil nut
- Agro forestry Development

Basic Principles

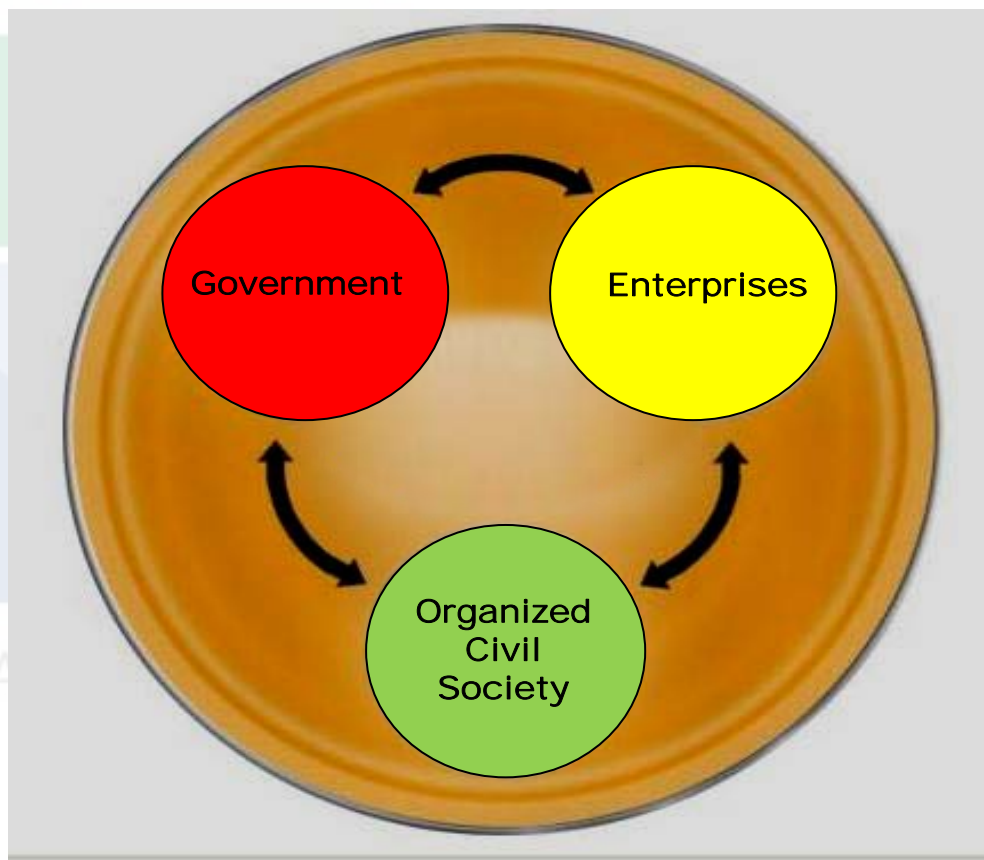
- ✓ Emphasis on local governance
- ✓ Rational land-use planning and management
- ✓ Business criteria into eco-production
- ✓ Local heritage preservation
- ✓ Biodiversity and environmental conservation

Holistic Approach



INTEGRANDO CONSERVACIÓN Y DESARROLLO

Governance



Initiative Programmes

- ✓ Responsible tourism
- ✓ Eco-business
- ✓ Biodiversity conservation
- ✓ Local Governance

INTEROCEÁNICA
SUR
INTEGRANDO CONSERVACIÓN Y DESARROLLO

Overall Coordinator Entity Role

- ✓ *To keep the integrity of the plan*
- ✓ *Conceptualization*
- ✓ *Transverse programs*
- ✓ *One of the stakeholders in the future*

Local Development Centers

- ✓ *Regional vision*
- ✓ *On the ground actions*
- ✓ *Local programs*
- ✓ *Progressively assuming governance leadership*

Intervention's Summary

