



Glacier Water Resources in Central Asia

Igor Severskiy, Maria Shahgedanova, Larissa
Kogutenko

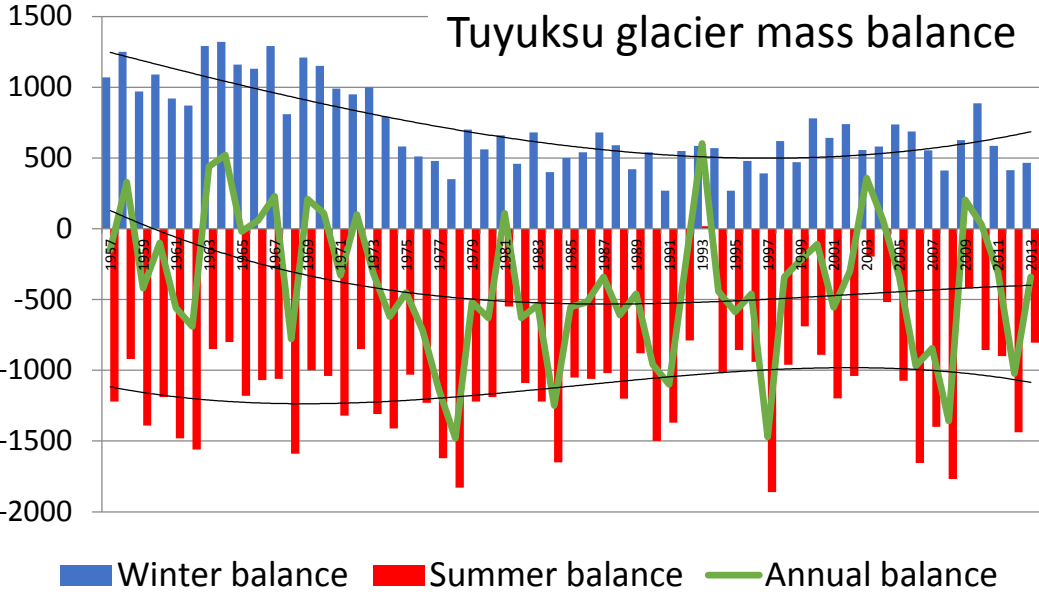
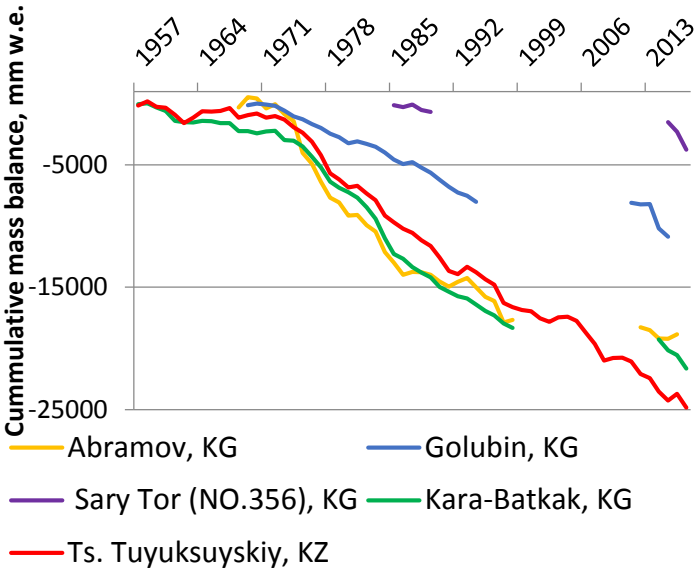
Institute of Geography, Almaty, Kazakhstan
iseverskiy@gmail.com

Long term glaciers observation in Central Asia

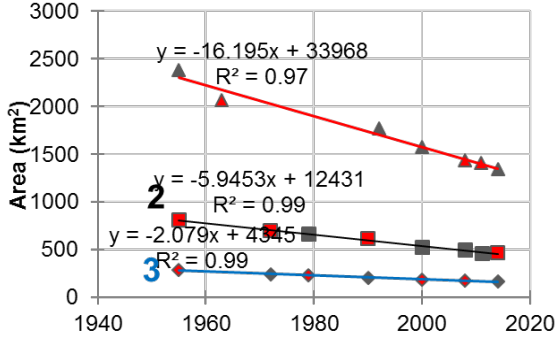


Tuyuksu glacier station

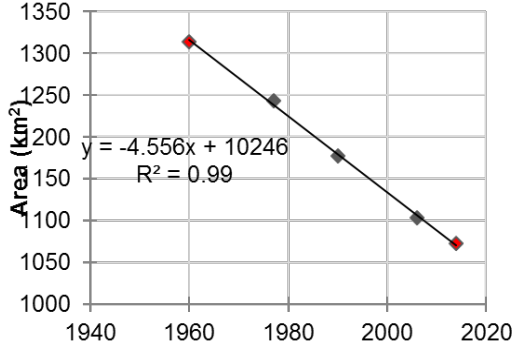
Kara-Batkak glacier station



Transboundary water issues in Central Asia

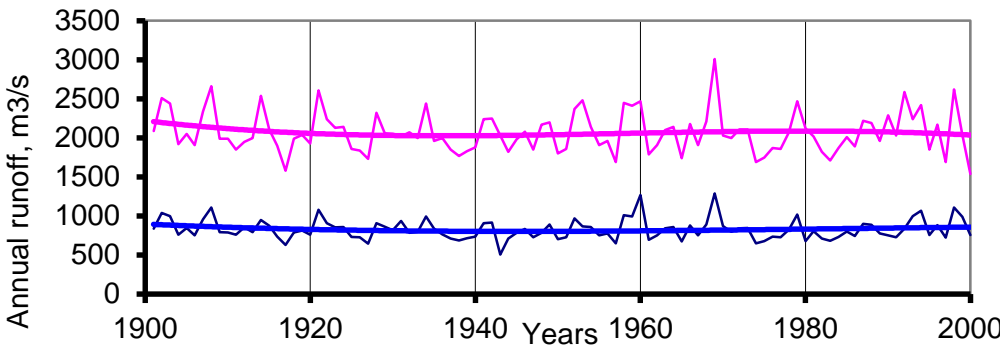


Naryn river basin



Glacier area (clear ice) is declining linearly at a rate of 0.75, 0.33 % a⁻¹ in the Ili-Balkhash and Naryn basins.

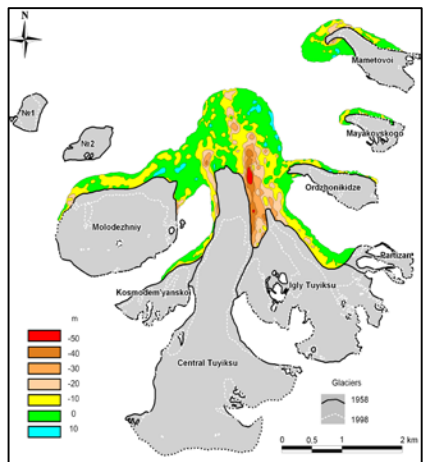
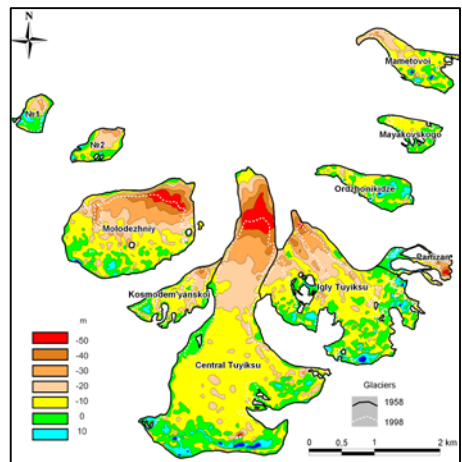
Glacier runoff and its impact to the water resources



Changes in the annual flow of the Amu-Darya (red) and the Syr-Darya (blue) river

For 40 years the loss of ice volume of the buried part of glaciers is equivalent to 20% of the losses of their open part.

The unresolved problem is evaluation of reserves of underground ice



The loss of volume of the open (left) and buried parts of the Tuyuksu glaciers

