

Bolstering the value of the Amazon

WOODROW WILSON CENTER, BRAZILIAN INSTITUTE

JANUARY 16, 2008

Pedro Bara
Director, Amazon Policy



Brazil and the World in 2020..... (10 years ago)

- Background vision to assess investment opportunities, commissioned by BNDES to a consortium leaded by ABN-Amro Bank, Booz Allen and Bechtel Co.
- Inter-disciplinary discussion group of the future based on four references:
 - The Clash of Civilizations (Samuel P. Huntington)
 - Commanding heights: the battle for the world economy (Daniel Yergin and Joseph Stanislaw)
 - The rise of the network society (Manuel Castells)
 - Agenda 21: the earth summit strategy to save our planet (Daniel Sitarz)



The global drivers today...

Relevance *Lower* *Equal* *Higher*

Identity

Corporations

Information &
Knowledge

Agenda 21





The global drivers today...

Relevance

Lower

Equal

Higher

Identity



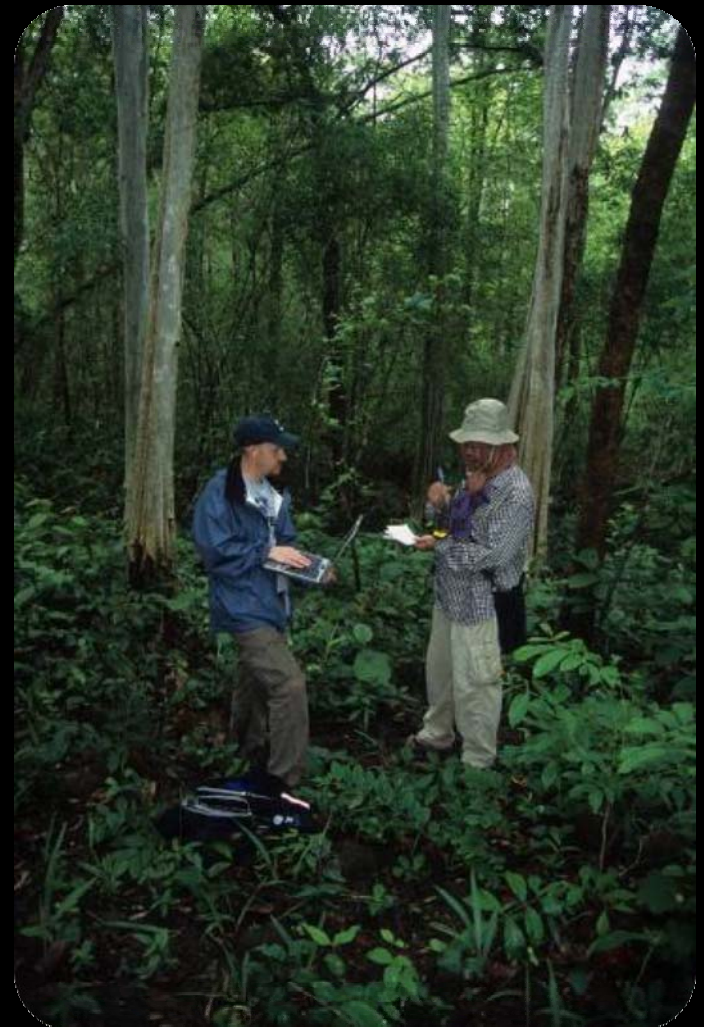
Corporations



Information &
Knowledge



Agenda 21





The Amazon and the global drivers....

Potential to
transform

Low

Medium

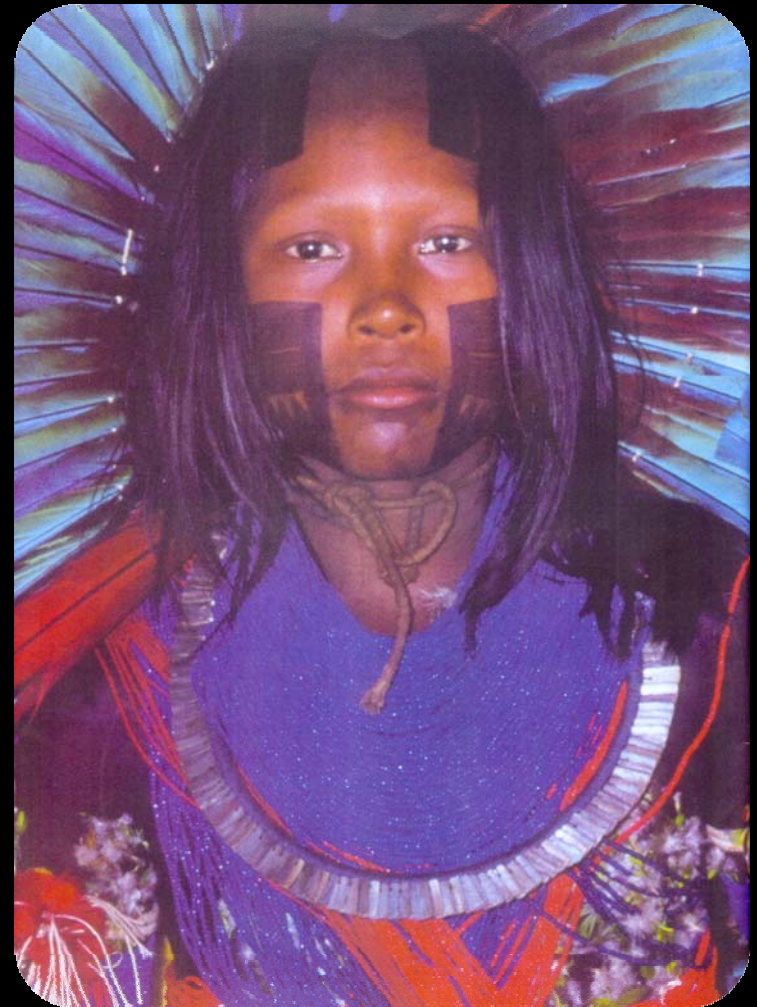
High

Identity

Corporations

Information &
Knowledge

Agenda 21





The Amazon and the global drivers...

Potential to
transform

Low

Medium

High

Identity



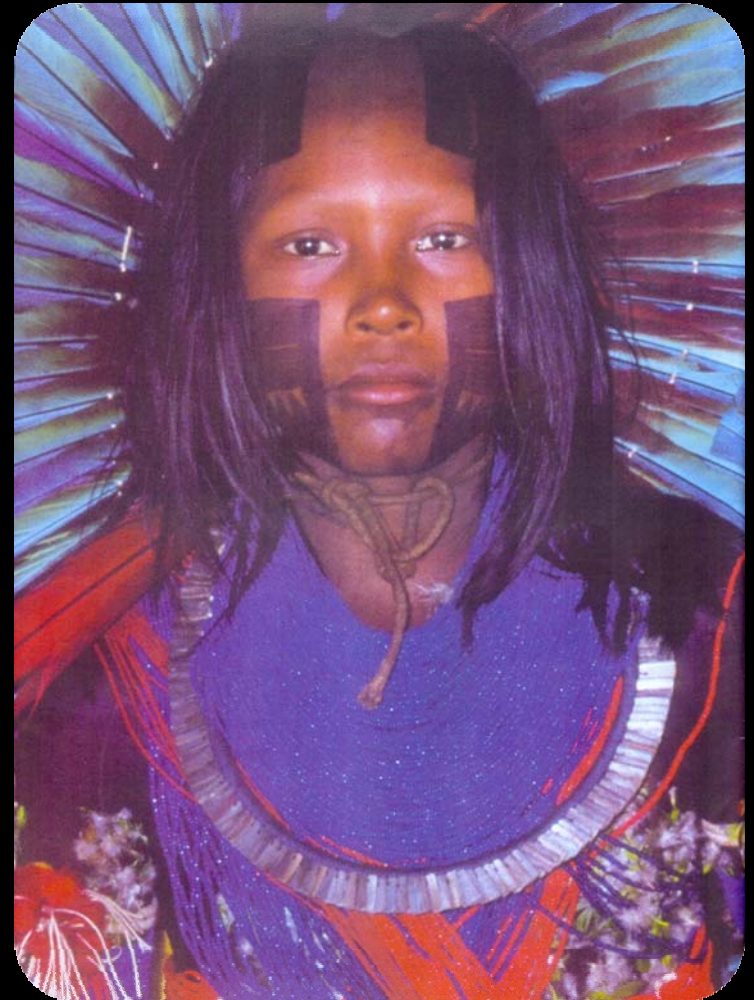
Corporations



Information &
Knowledge



Agenda 21





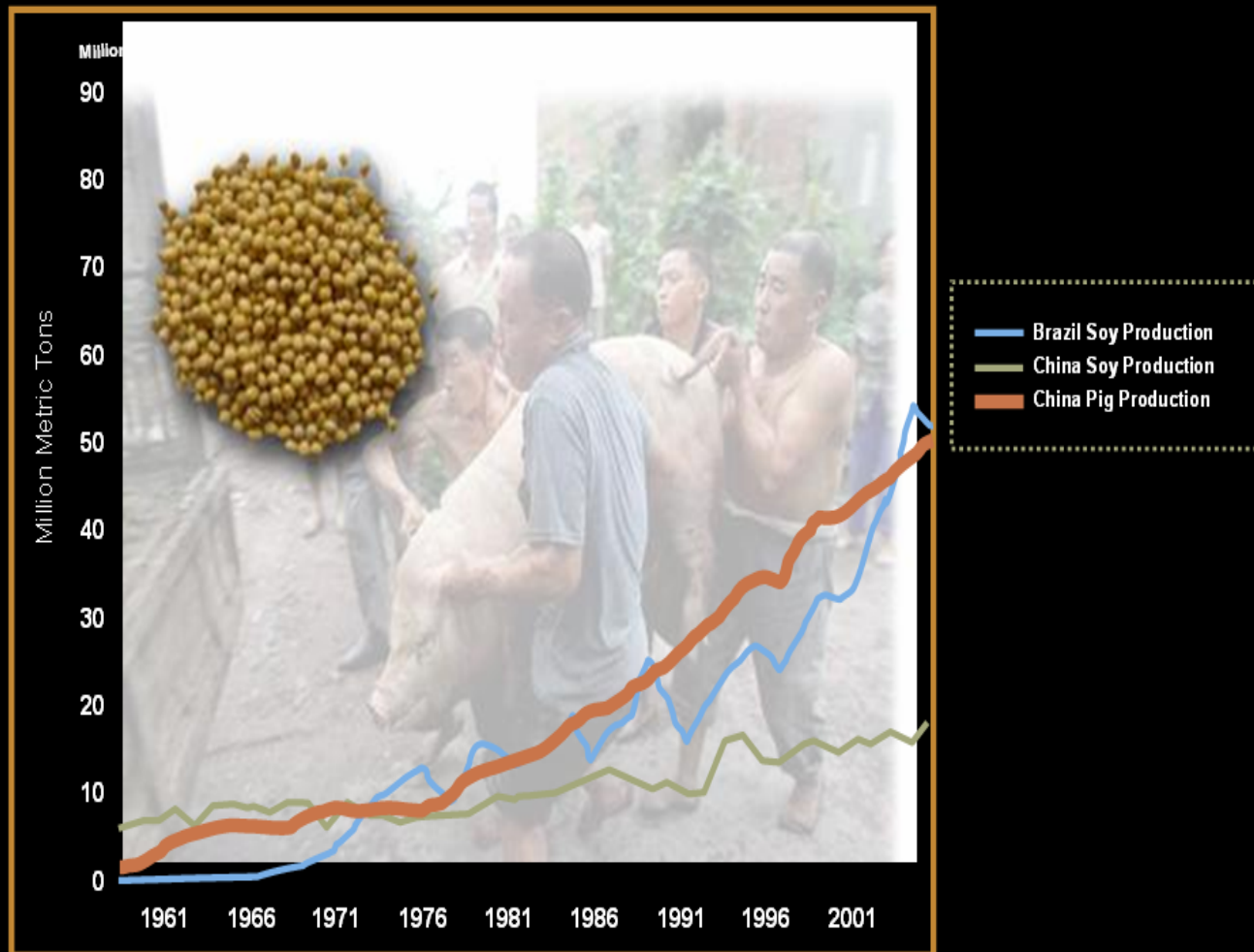
New drivers or references?

- China
- “An inconvenient truth” (Al Gore)





China





Climate change





Bolster the value and mega investments?

Respect to the diversity heritage
Land use productivity, value-added and sustainability of traditional products and services

Global attention
Principles, good practices
Social and environmental industry criteria

Innovation
Sound I&K investments
Excellence centers and networking

Payment for environmental services
Incentives to reduce emissions from deforestation and degradation (REDD)
Rainfall parks

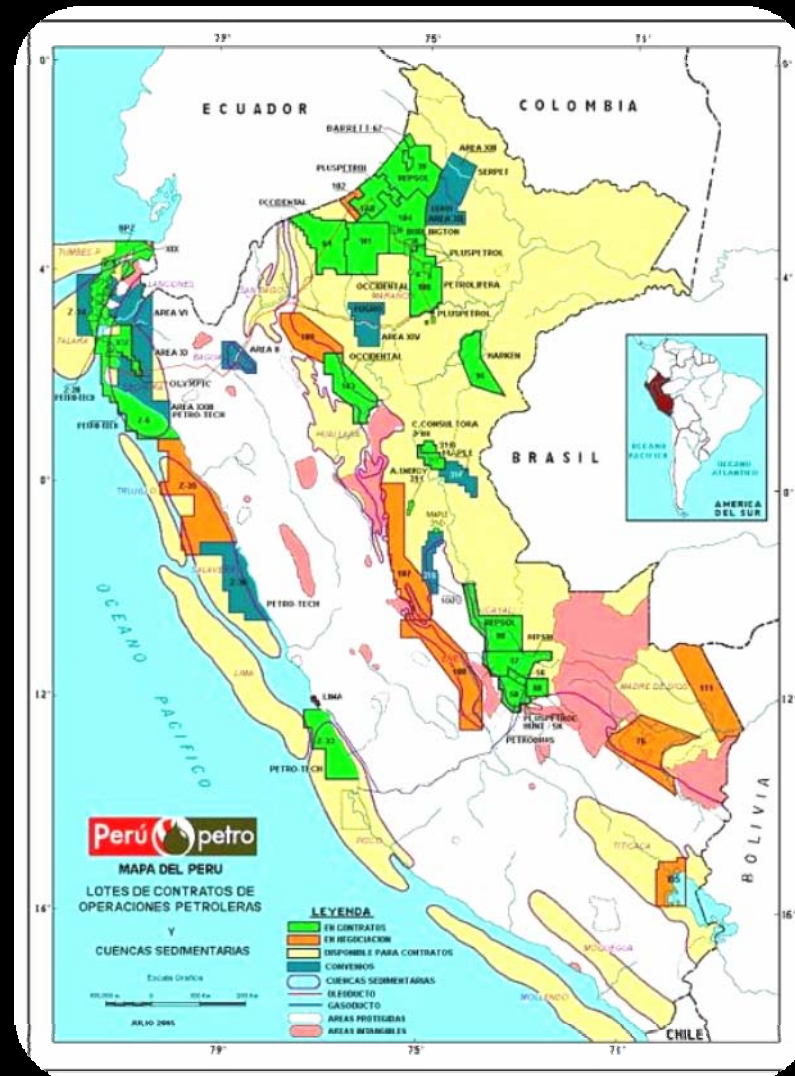


South American integration





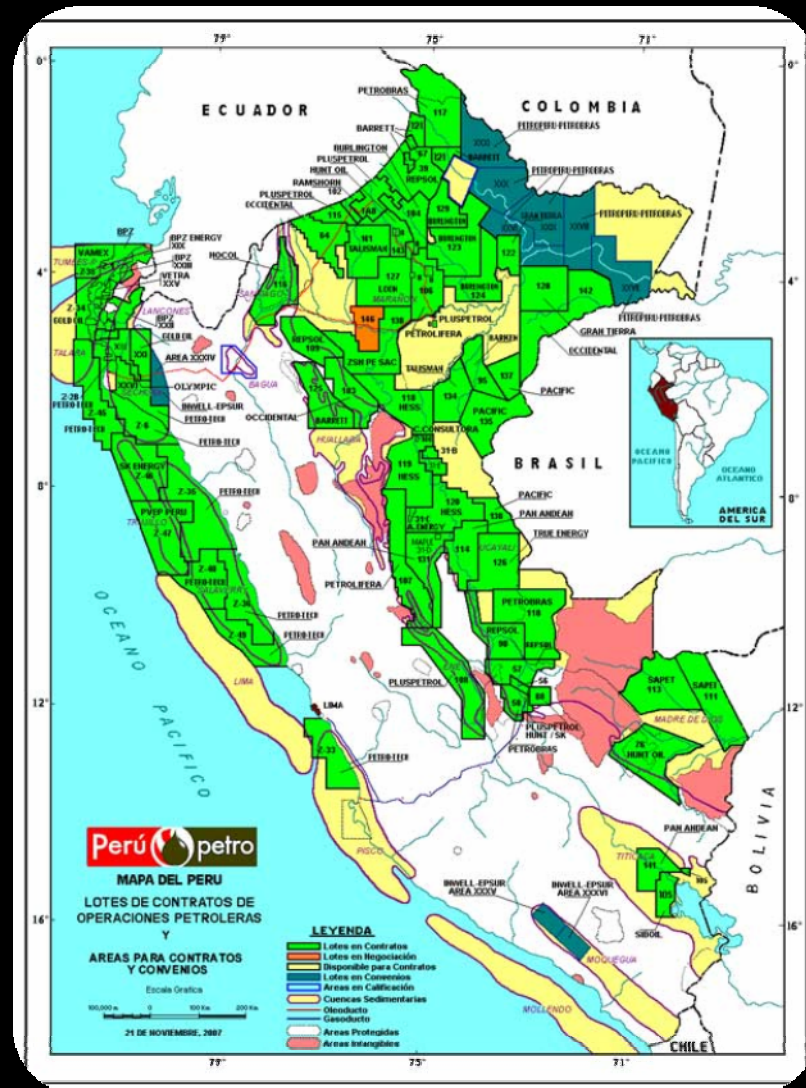
Energy - Oil and gas in Peru (July, 2005)







Energy - Oil and gas in Peru (November, 2007)



ESTUDOS DE VIABILIDADE TÉCNICA, ECONÔMICA E EIA-RIMA DE APROVEITAMENTOS HIDRELÉTRICOS



Aproveitamento Hidrelétrico	Conclusão dos Estudos	Potência (MW)
Belo Monte	30/06/2008	5.681
Marabá	31/12/2008	2.160
Tabajara	31/12/2008	350
Teles Pires	30/06/2009	3.422
Apicás	30/06/2009	275
São Luiz	30/06/2009	9.080
São João da Barra	31/07/2010	1.800
Prainha	31/07/2010	1.600
C. Porteira	31/07/2010	1.400
Total		25.768

ESTUDOS DE INVENTÁRIO HIDRELÉTRICO DE BACIAS HIDROGRÁFICAS



Bacia Hidrográfica	Conclusão dos Estudos	Potência a inventariar (MW)
Tapajós	31/07/2007	14.000
Aripuanã	30/06/2008	3.000
Trombetas	30/06/2008	3.000
Juruena	30/06/2008	5.000
Araguaia	31/09/2008	3.100
Sucunduri	31/12/2008	650
Branco	31/12/2008	2.000
Jari	31/03/2009	1.100
Itacaiunas	30/06/2010	450
Jatapu	30/06/2010	650
Total		32.950



What are we talking about?

- Utilitarian scenario
- Long-term national sector policy commitments
- Potential Amazon-wide impacts
(induced and cumulative impacts)







Planned investments in water ways

BRASIL

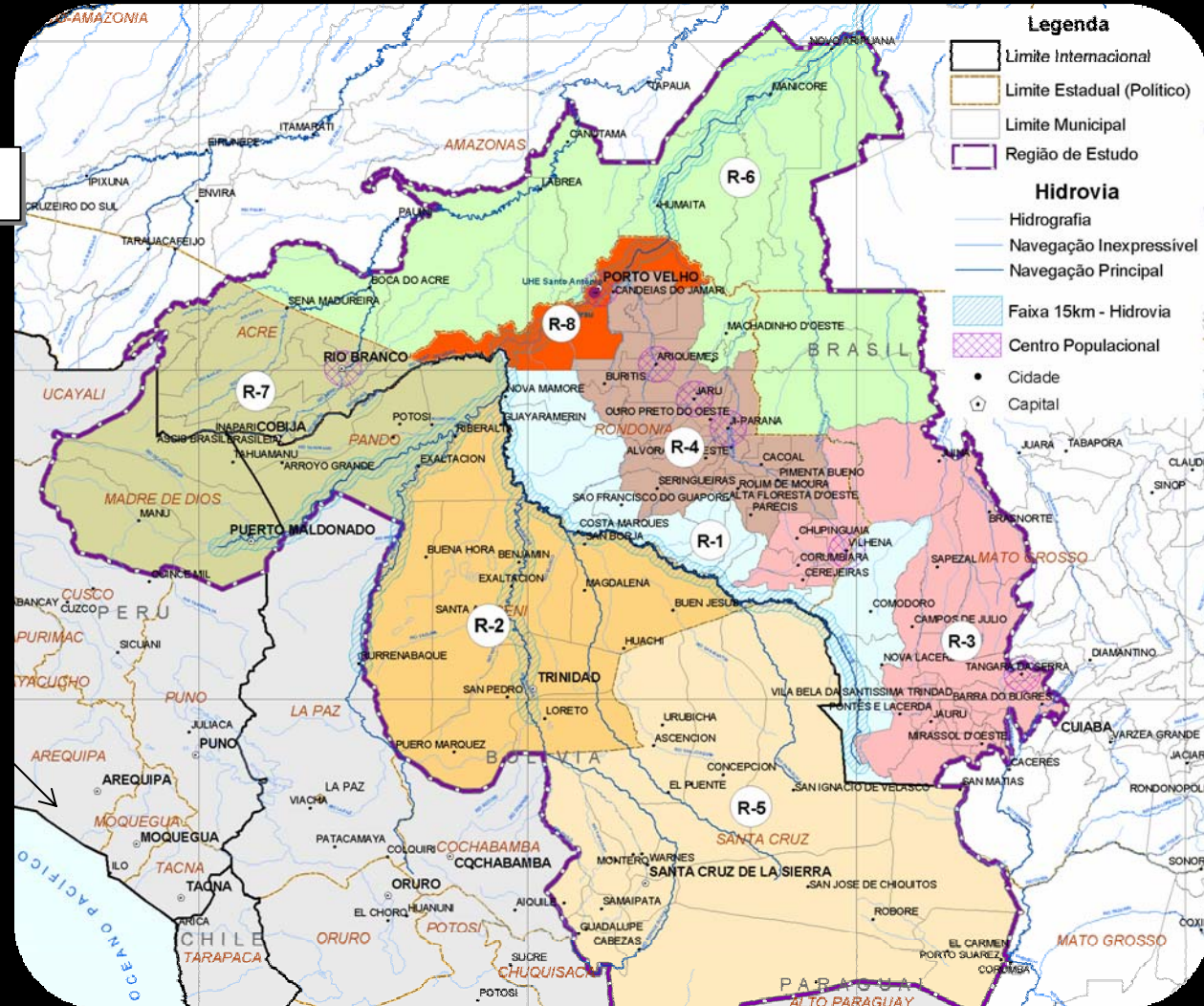
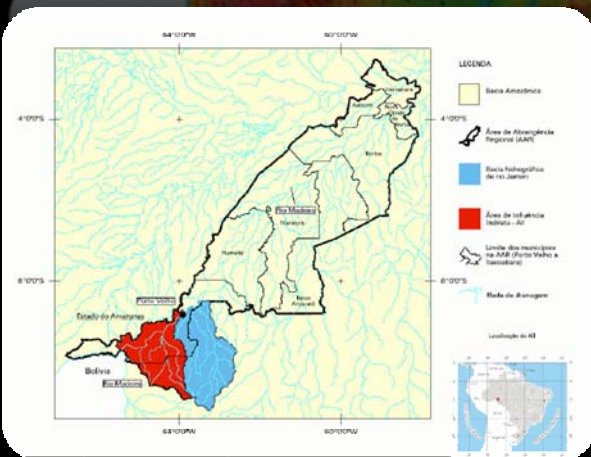
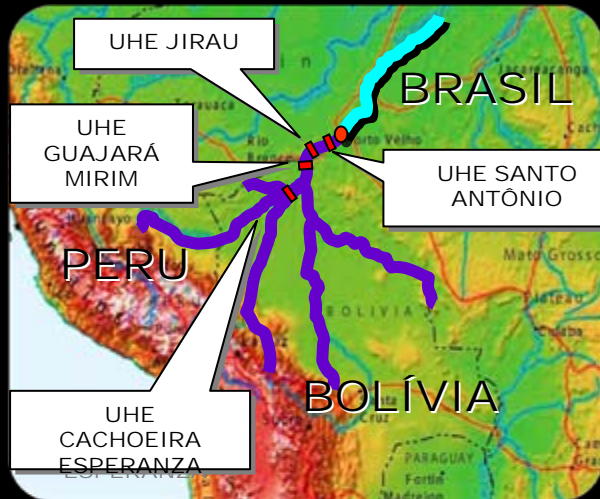
PREVISÃO DE INVESTIMENTO EM INFRA-ESTRUTURA LOGÍSTICA 2007-2010

R\$ bilhões

MODAL	2007	2008 - 2010	TOTAL
Rodovias	8,1	25,3	33,4
Ferrovias	1,7	6,2	7,9
Portos	0,6	2,1	2,7
Aeroportos	0,9	2,1	3,0
Hidrovias	0,3	0,4	0,7
Marinha Mercante	1,8	8,8	10,6
TOTAL	13,4	44,9	58,3



Madeira complex, potential area of induced impacts



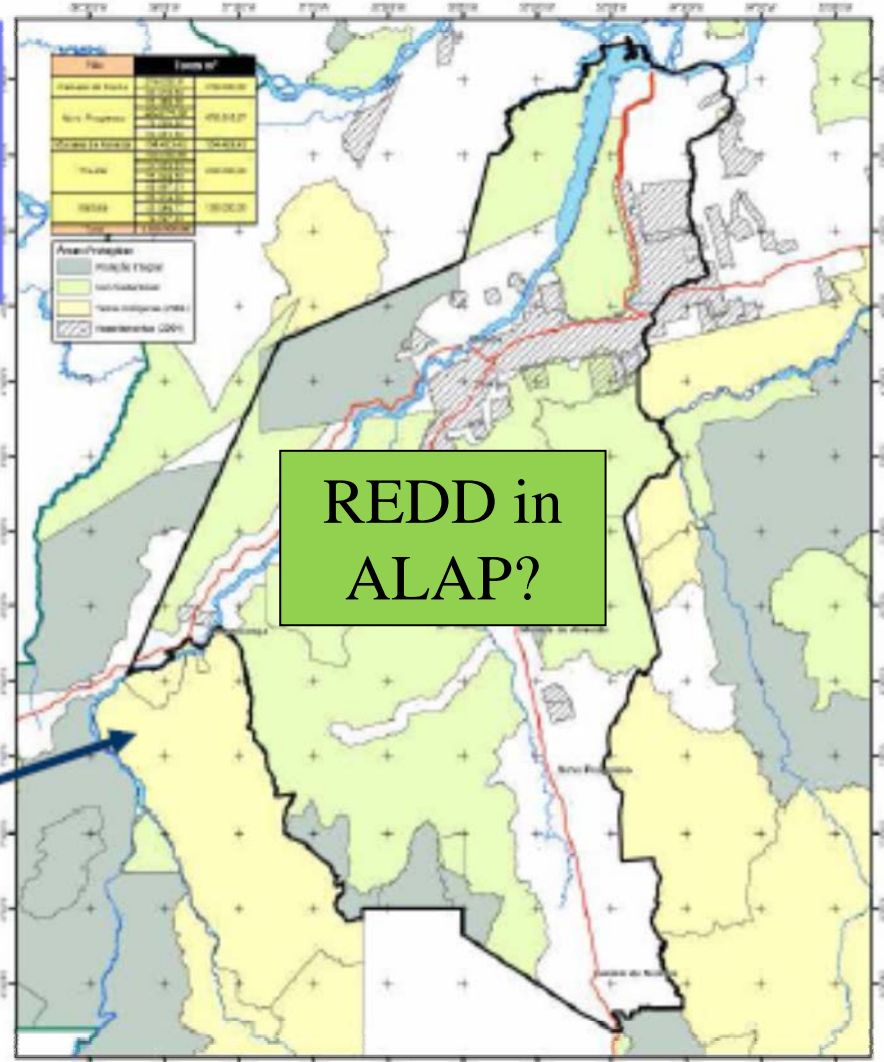


Discussion points

- Smarter alternatives at the sector policy level: investments in conservation and efficiency, other renewable energy sources and other transportation modes;
- Common understanding of long-term conservation targets which adequately incorporate the potential future value of the Amazon;
- Attention to long-term programs and cumulative impacts vis-à-vis conservation targets to consider “go” and “no-go” zones and rivers;
- Any “go” project should be preceded by the implementation of precautionary / preparatory locally agreed measures dealing with: strengthening of local institutions, respect to cultural values and land use peace (“ordnung”);
- If the final objective is regional sustainable and equitable development, infra projects must be combined with other relevant investments.



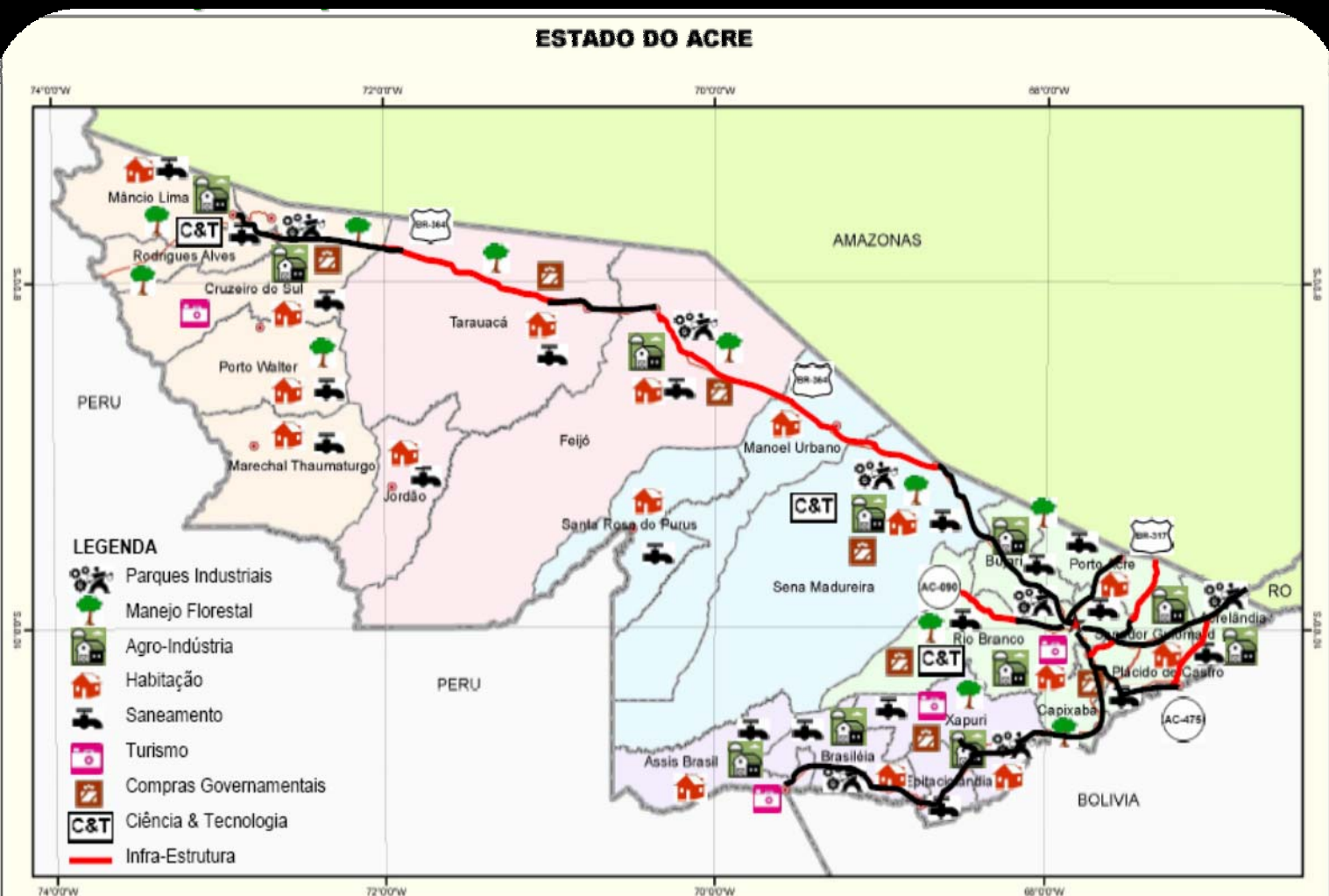
Área de Manejo:
5 milhões de ha



REDD in ALAP?



Strategic planning of Acre 2007-2010



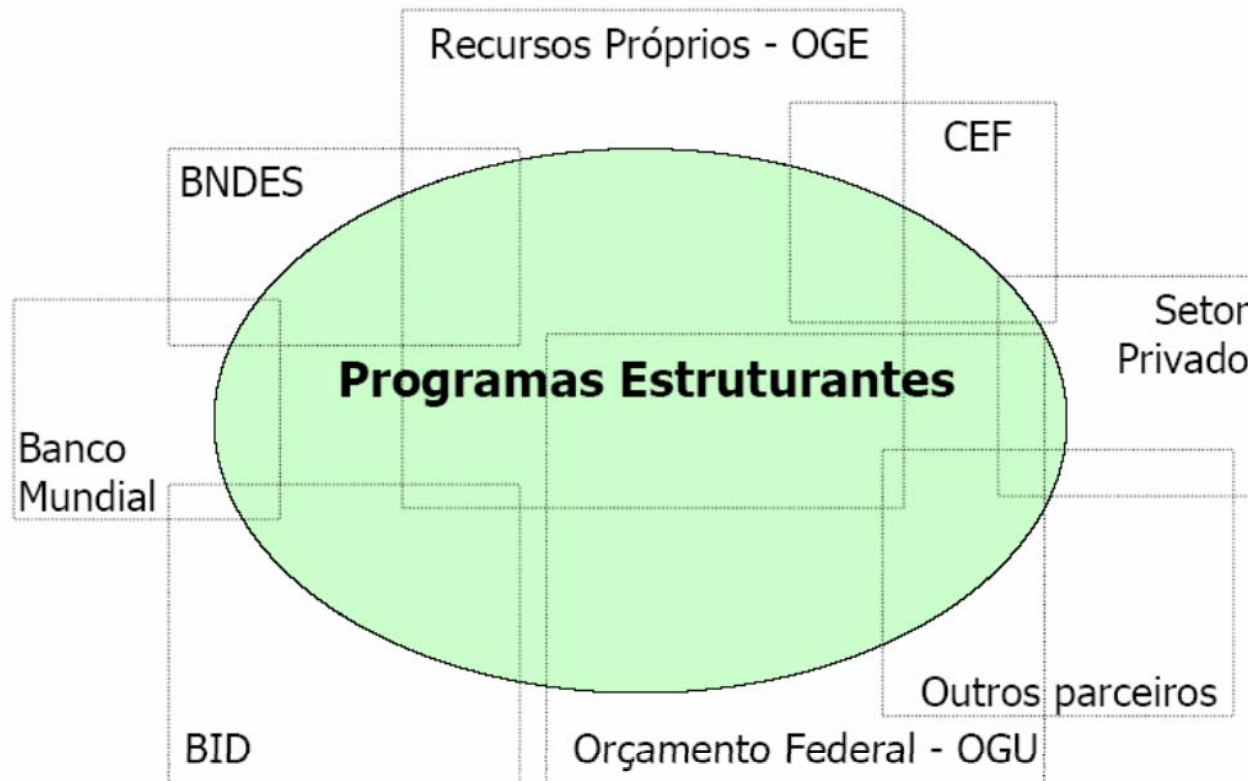


Strategic planning of Acre 2007-2010

Fontes de Recursos

Pacto Estratégico de Financiamento

Valor previsto de investimentos: **R\$ 2,37 bilhões**





©

®

WWF