

CRIME AND VIOLENCE IN LATIN AMERICA AND THE CARIBBEAN: PREVENTION AND MIGRATION

Rodrigo Guerrero-Velasco MD., Dr. P.H.
Former Mayor of Cali, Colombia
Wilson Institute Washington DC.
February 7, 2017

HOMICIDE ACCORDING TO SOURCE CENTRAL AMERICA 2000 - 2006

Años	Fuentes	El Salvador	Guatemala	Honduras	Nicaragua	Panamá
2000	OEA	37.3	25.8	49.9	9.0	10.1
2000	PNUD	45.0	28.0	0.0	9.0	10.0
2001	OEA	34.6	25.2	53.7	10.0	10.1
2001	PNUD	40.0	30.0	0.0	10.0	10.0
2002	OEA	31.1	30.7	55.9	10.0	12.4
2002	PNUD	39.0	32.0	69.0	10.0	12.0
2003	OEA	32.7	35.0	33.6	12.0	10.8
2003	PNUD	40.0	37.0	65.0	12.0	11.0
2004	OEA	41.0	36.3	31.9	12.0	9.7
2004	PNUD	49.0	38.0	35.0	12.0	10.0
2005	OEA	54.9	42.0	35.0	13.0	11.2
2005	PNUD	62.0	44.0	37.0	13.0	11.0
2006	OEA	55.3	45.2	42.9	12.4	11.3
2006	PNUD	65.0	47.0	46.0	13.0	11.0


Fuentes:
PNUD: Informe sobre desarrollo humano para América Latina 2009 - 2010, Octubre 2009.
OEA: La seguridad pública en las Américas, retos y oportunidades, 2da. Edición diciembre 2008.

A REGIONAL SYSTEM of STANDARDIZED comparable indicators:

OBJECTIVE:

- To establish a **REGIONAL SYSTEM**
- Of **COMPARABLE** indicators of violence, crime and peaceful coexistence
- To **MONITOR** and **COMPARE** regional data
- And **EMPOWER** decision makers of the region in the use of information to effectively **REDUCE VIOLENCE**

Guerrero Velasco R, Gutiérrez Martínez MI, Fandiño Losada A, Cardona S. 2012.
"Sistema de Indicadores Comparables de Convivencia Y Seguridad Ciudadana: Un Consenso de Países."
Revista Panamericana de Salud Pública 31 (3): 253-59.

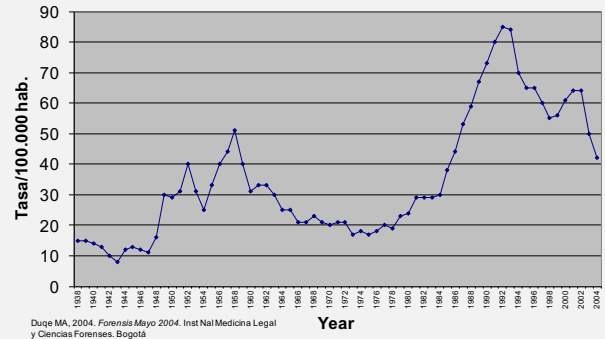


Regional System of Standardized Indicators of Crime

**URBAN VIOLENCE:
THEORETICAL MODEL OF RISK FACTORS**

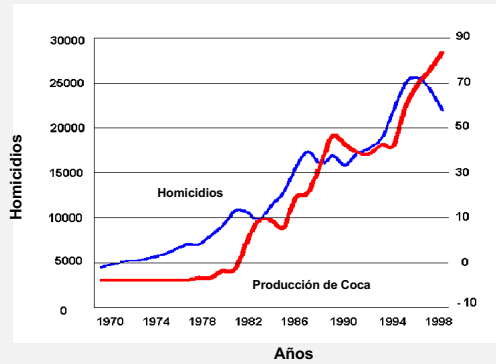


**COLOMBIA homicide rates
1938-2004**



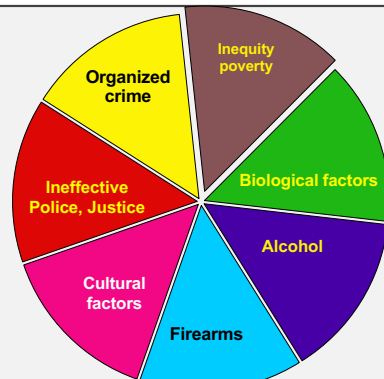
Doque MA, 2004. Forensis Mayo 2004. Inst Nat Medicina Legal y Ciencias Forenses. Bogotá

**Cocaine production and homicide
COLOMBIA 1970 - 1998**

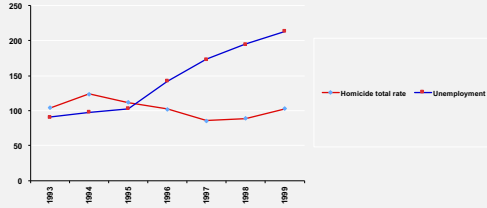


Fuente: *Violencia, criminalidad y justicia: otra mirada desde la economía.* Armando Montenegro, Carlos Esteban Posada y Gabriel Piraguive.

**URBAN VIOLENCE:
THEORETICAL MODEL OF RISK FACTORS**

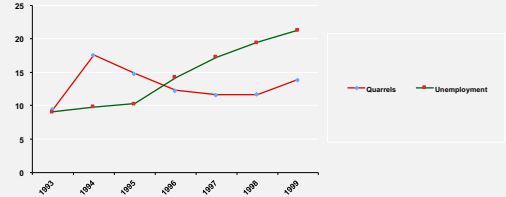


UNEMPLOYMENT AND HOMICIDE RATES CALI 1993-1999



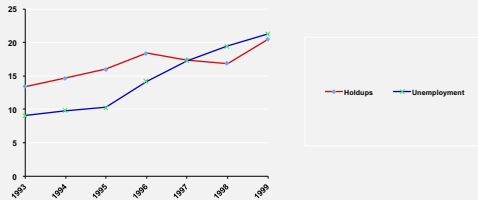
r -.75 p = .1

INTERPERSONAL CONFLICT AND UNEMPLOYMENT HOMICIDE RATES CALI 1993-1999



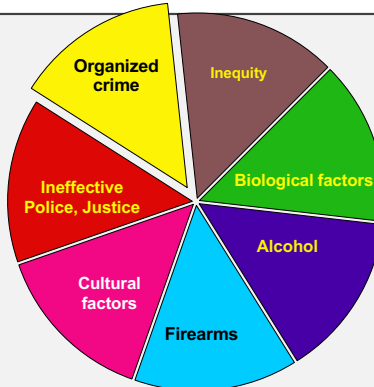
r .09 p = .71

ARMED ROBBERY AND UNEMPLOYMENT HOMICIDE RATES. CALI



r .4 p = .02

URBAN VIOLENCE: THEORETICAL MODEL OF RISK FACTORS

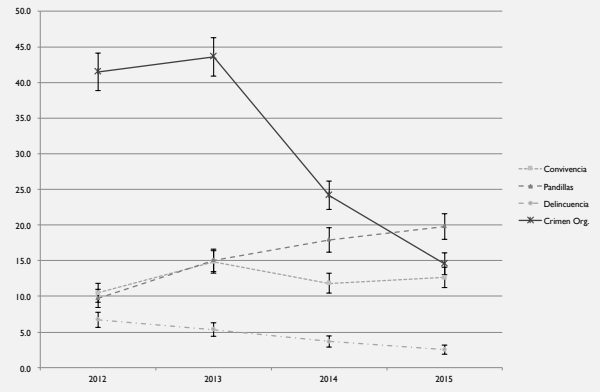


Homicide in Cali according to motive

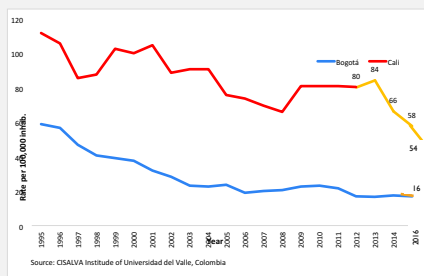
	Homicides 2010	Homicides 2012
Interpersonal conflict	566 46.5%	423 32.7%
Organized crime	653 53.6%	869 67.3%

Presentation by RGV at the Woodrow Wilson Institute Washington 2012

Homicide rates according to motive Cali, Colombia, 2012 - 2015.



HOMICIDE RATE CALI 1995-2016



Source: CISALVA Institute of Universidad del Valle, Colombia