

Specific Considerations for Water Resources in the Himalaya

Rijan Bhakta Kayastha, D. Sc.

Himalayan Cryosphere, Climate and Disaster Research Center (HiCCDRC)

Kathmandu University, Nepal

E-mail: Rijan@ku.edu.np

1. Recent Activities in Nepal

a) Capacity building on cryospheric science (KU)

31 young glaciologists produced (4 next yr)

- 25 (Nepal), 3 (Pakistan), 2 Afghanistan, 1 (India)**
- 8 are supported by the CHARIS Project**

b) New research sites for glacier and water resources study

Ponkar Glacier and Dudh Khola basin in Manang dist. (CHARIS)

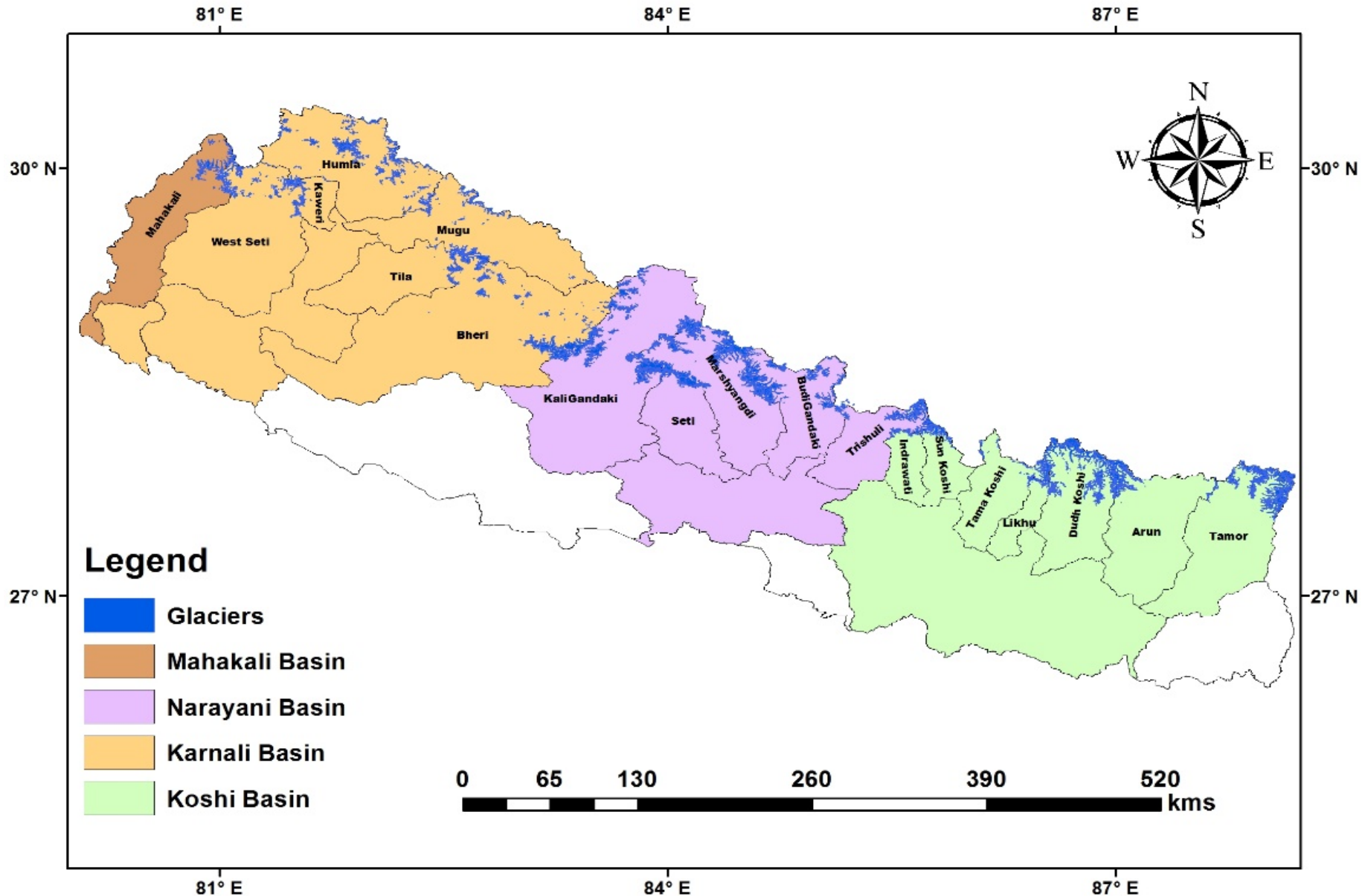
c) River basin Plan of Nepal with hydropower and strategic environmental and social assessment (WECS, GoN)

- with special consideration of snow and ice**

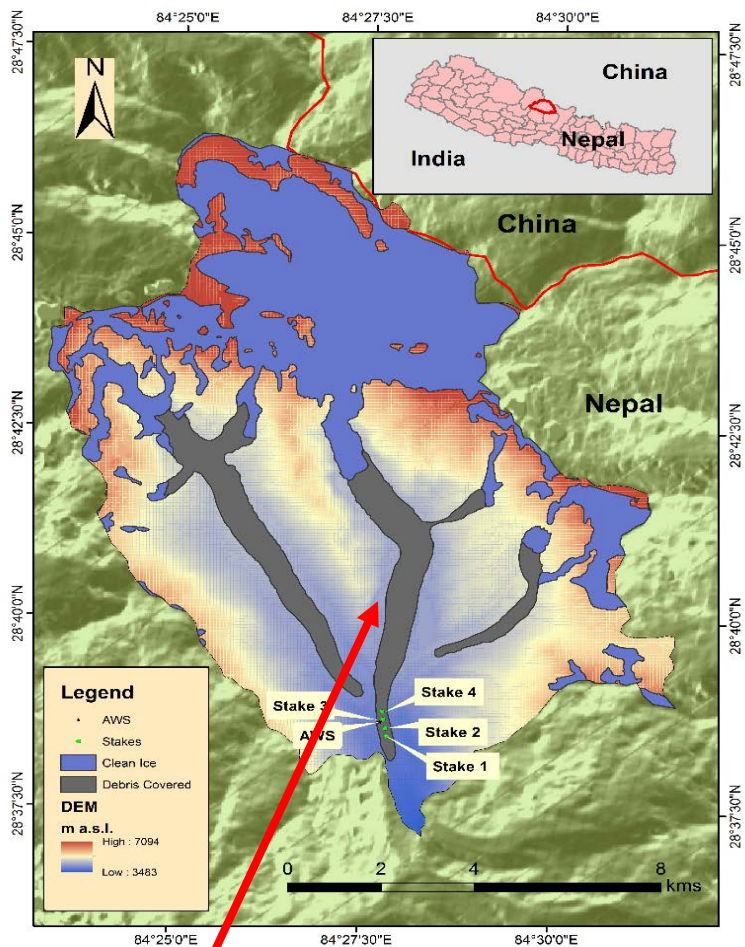
2. Water resource priority research areas in the Himalaya

- study at least one glacier of all glacierized river basins (19 in Nepal)**
- water resource potential of small basins (HP, Irri...)**
- Glacio-hydrological modeling of sub-basin level and predict future discharge and contributions of snowmelt, icemelt, rain and baseflow in discharge**

Glacierized-sub river basins of Nepal

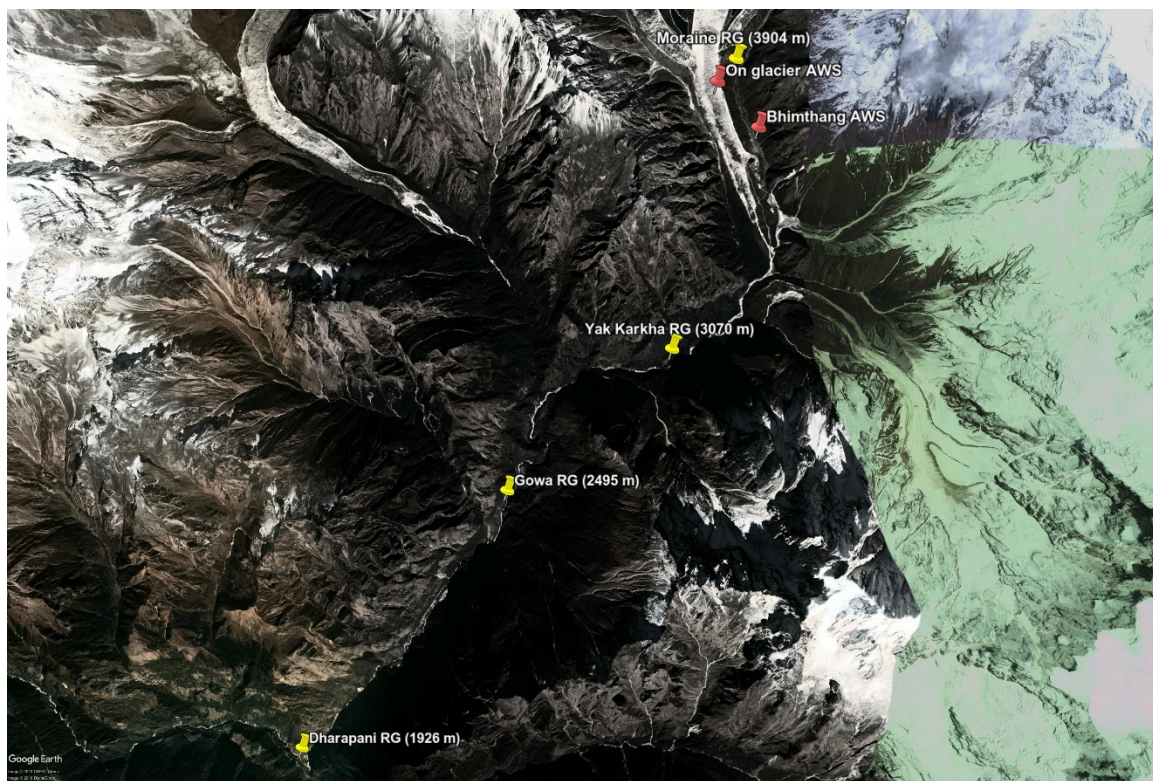


A New Glacier Research Site; Ponkar Glacier in Manang



Ponkar Glacier

Location map of AWSs, Ppt. and temp and hydrological stations



Equipment support to KU

Campbell AWS

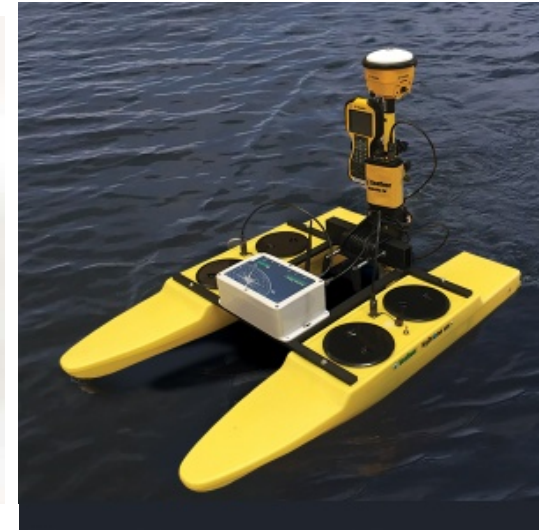


GSSI-GPR



**HyDrone-RCV Portable, Remote Control
Survey Boat**

Echo-sounder



Trimble dGPS RTK 10

Water chemistry lab in Bhutan

