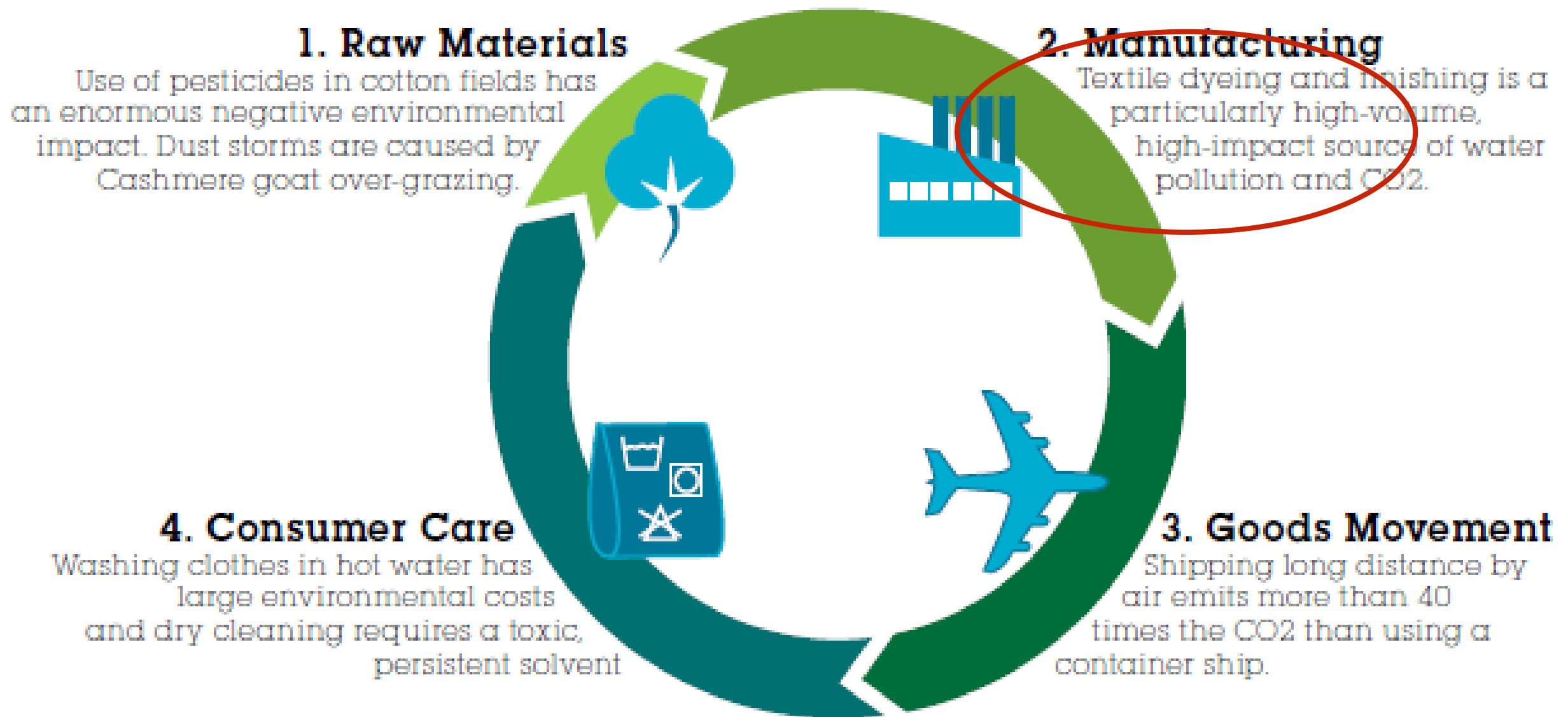

CLEAN BY DESIGN



Susan Egan Keane
Deputy Director, NRDC Health and Environment Program
November 1, 2016

THE FASHION INDUSTRY'S HEAVIEST ENVIRONMENTAL IMPACTS



Program Development

Research opportunities:

10 Best Practices

- 2008-2010 (<10 mills)



Test and validate

- 2010-2012 (20 mills)



City Initiative

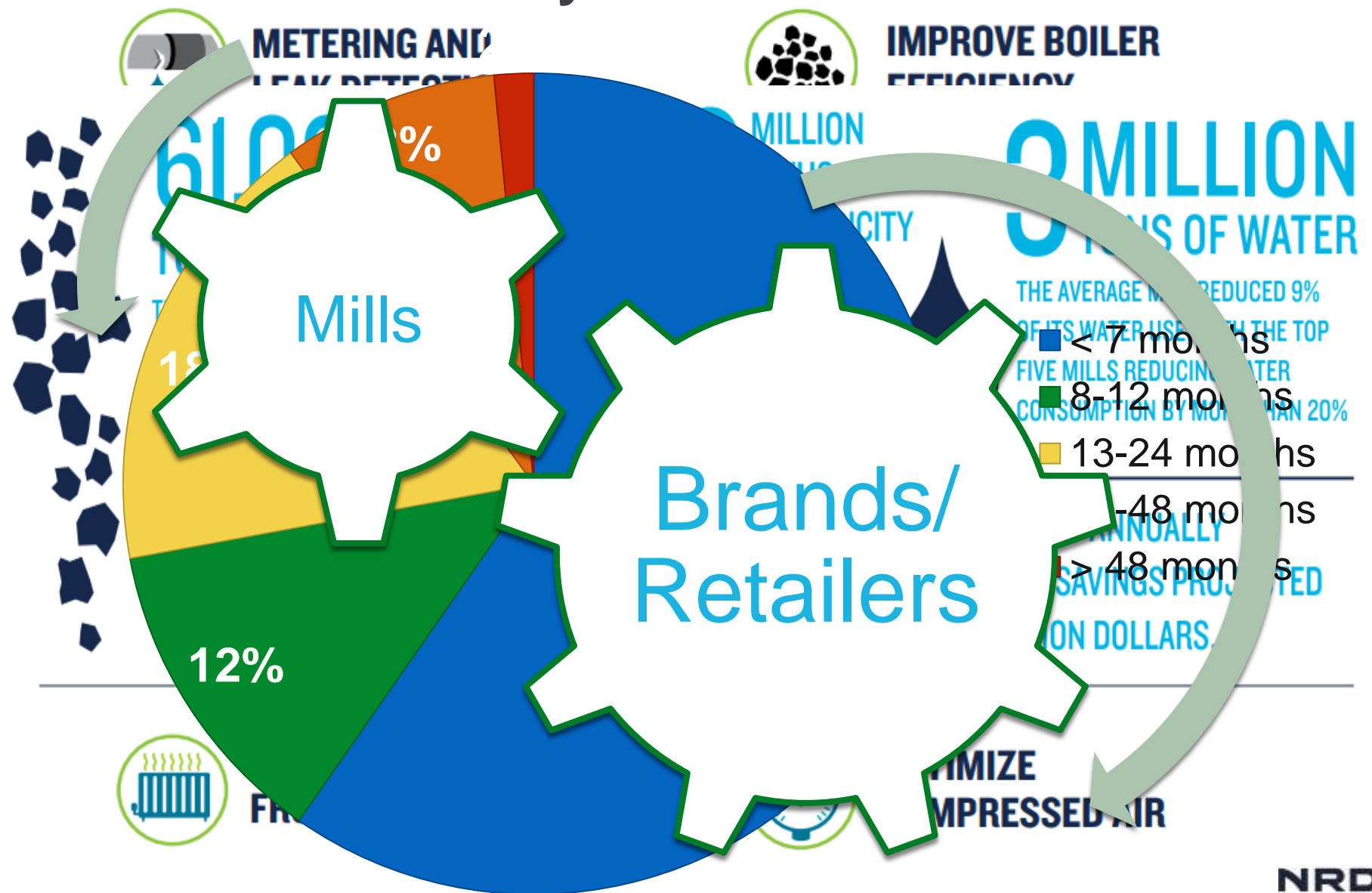
- 2013-2015 (>100 mills)



Bring to scale

- 2015 to date (13 high-touch mills v. 13 low-touch mills)

Payback Periods



CBD 2016 Program Participants

Participating Brands:



INDITEX



ANN INC.



JCPenney

Mill Participation:

Program Track	# of Mills
Low Touch	13
High Touch	13
Total	26



Current Work (2016-2017)

Modify program to make it easier to scale

- “light touch model”

Build technical capacity

- e-learning modules

Increase demand

- Up the game at the Sustainable Apparel Coalition
- Strengthen MNC sourcing policies
- Radical transparency → public pressure

CBD Supply Chain Policy Model

Map

- Know factories throughout the supply chain, identify hot spots of largest environmental impacts

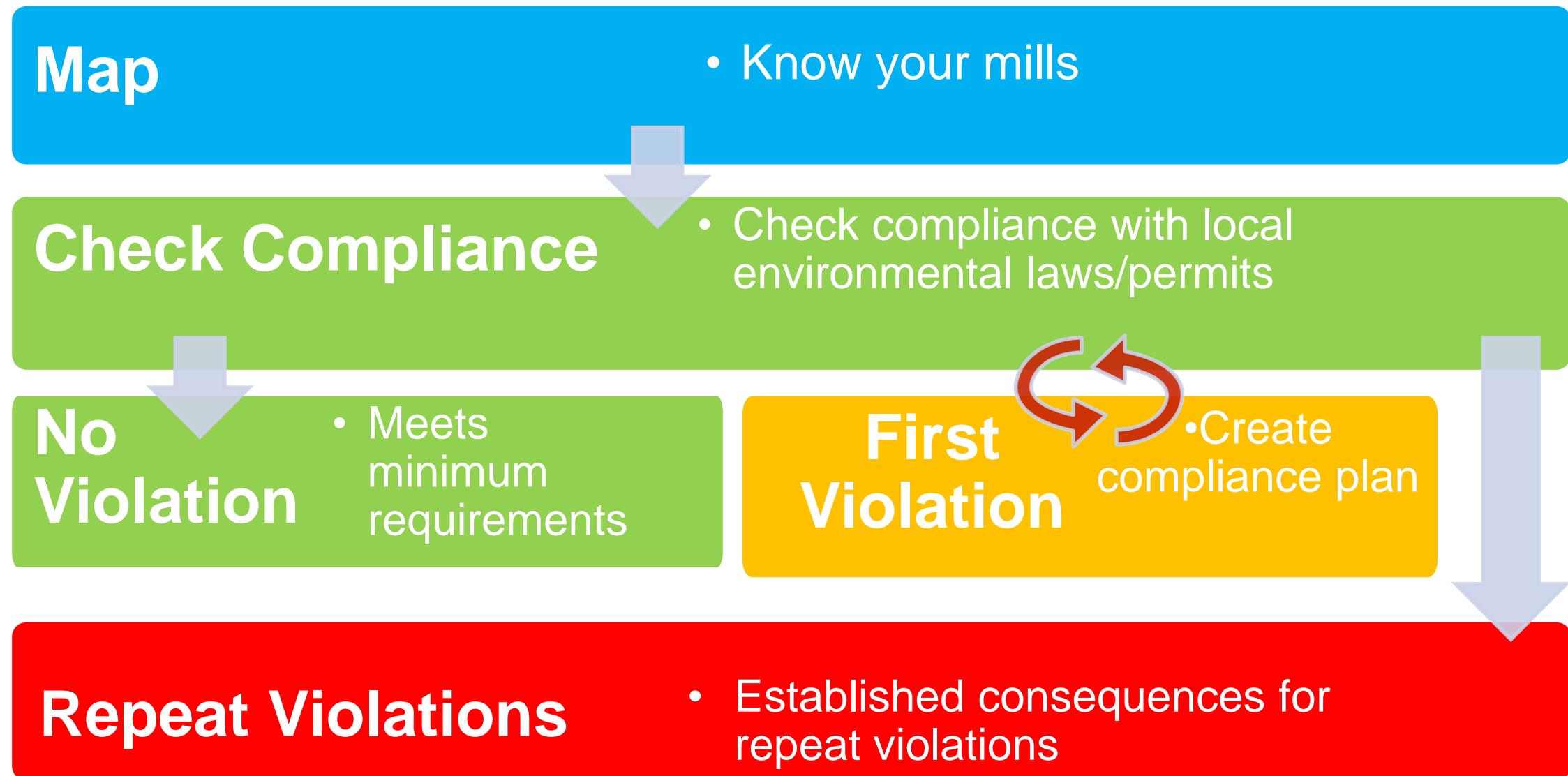
Measure

- Evaluate environmental performance (including compliance) of suppliers according to clear metrics

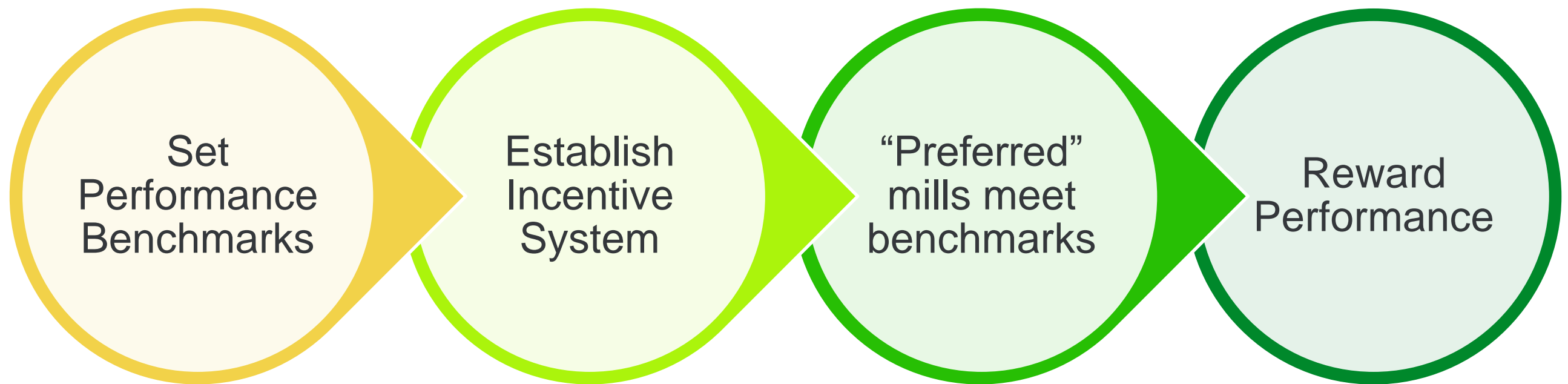
Motivate

- Require compliance; promote good environmental performance with clear business consequences

Level 1 – Minimum Requirements



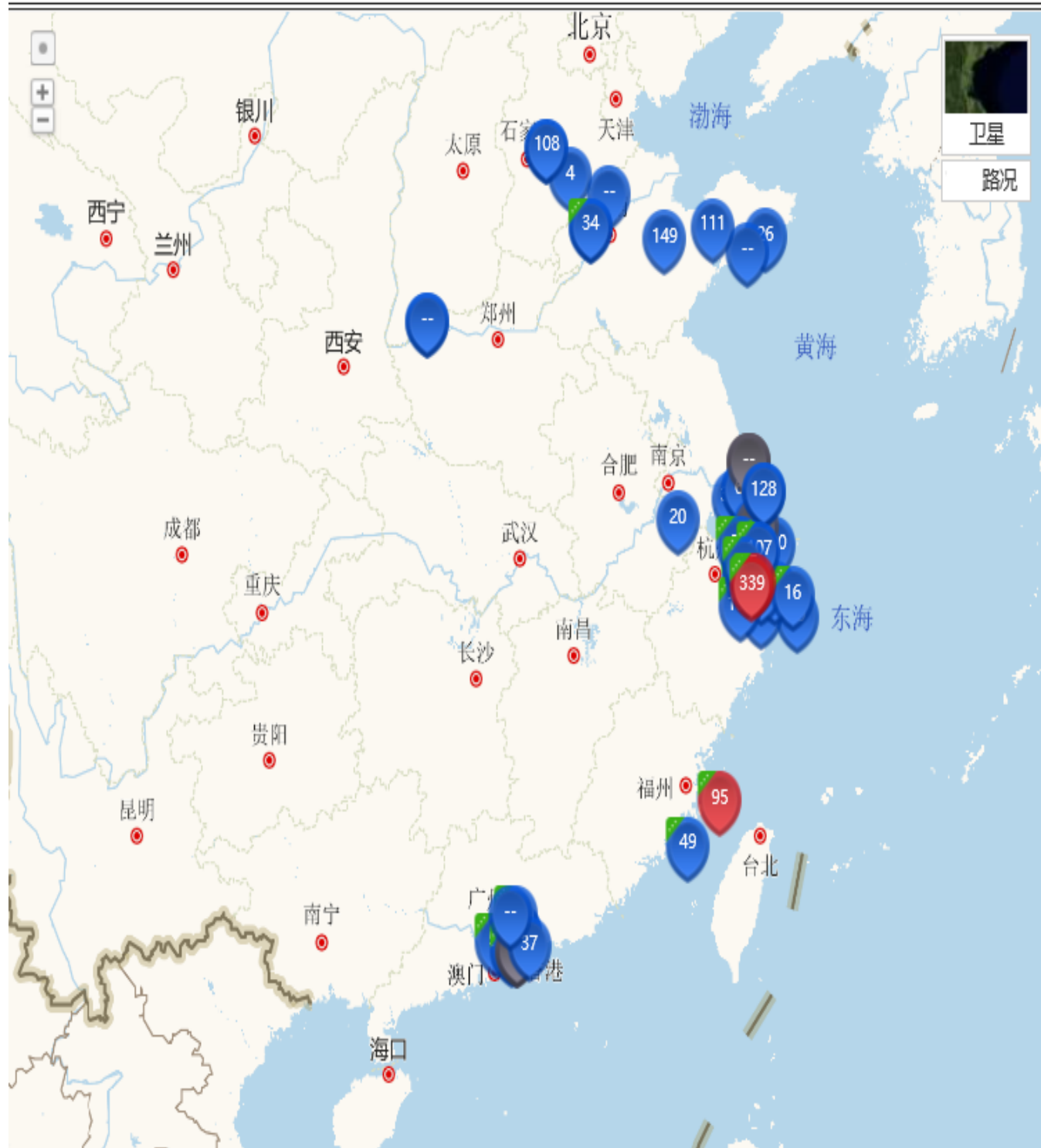
Level 2 – Preferred Mill Program



IPE Online Monitoring Map - Beta:

Beta tool

Key Monitored
Sources



Company name :

Region :

Select pollutant : ☒ Select all ☐ COD ☐ NH3-N ☐ pH Level

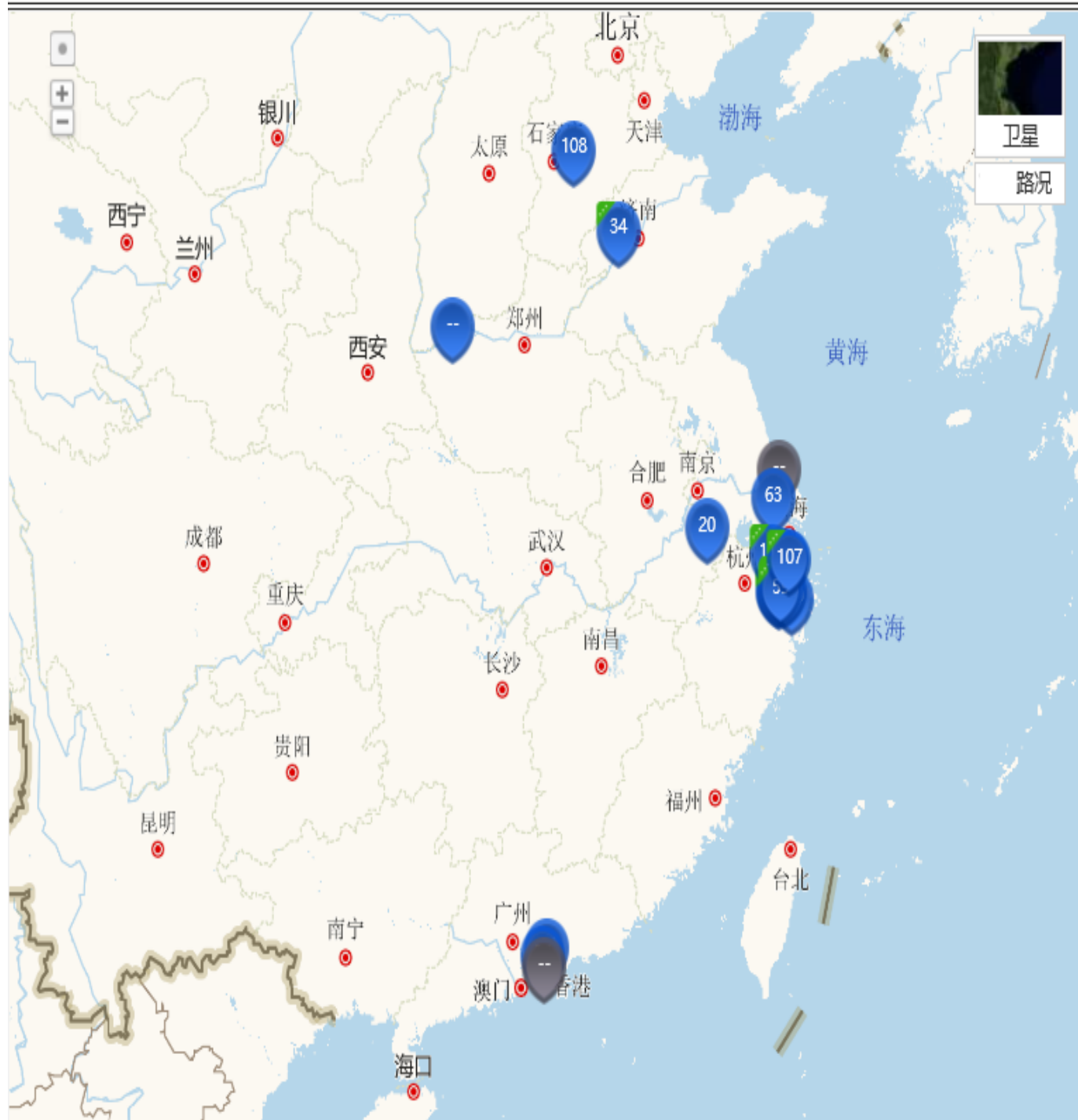
Filter by brand : ☐ Example Brand ☐ SAC

3 wastewater sources nationwide are currently exceeding standards

ID	Name	Indicator	Value	DateTime
1	Shaoxing Jinxianghui Textile Print&Dyeing CO.,LTD	COD	475.53	2016/10/4 0:00:00
2	Shaoxing Country Jinxianghui Print and Dyeing Co., Ltd.	COD	475.53	2016/10/4 0:00:00
3	Changzhou Dongfang Eastdye Textile Co.,Ltd	COD	393.59	2016/10/5 21:00:00
4	Shaoxing Yongshun dyeing & Printing Co., Ltd.	COD	370.99	2016/10/4 0:00:00
5	SHAOXING FEIYA DYEING & PRINTING CO.,LTD. (绍兴飞亚印染有限公司)	COD	338.98	2016/10/4 0:00:00
6	Shaoxing Yuejin Printing & Dyeing Co.,Ltd	COD	291.33	2016/10/4 0:00:00
7	Shaoxing Yuejin Printing & Dyeing Co.,Ltd	COD	291.33	2016/10/4 0:00:00
8	ZHEJIANG YINAN PRINTING & DYEING CO.,LTD	COD	228.28	2016/10/4 0:00:00
9	Winnitex Limited	COD	226.28	2016/10/4 0:00:00
10	Shao Xing Kerry Printing&Dyeing Co.,Ltd	COD	220.68	2016/10/4 0:00:00

IPE Online Monitoring Map - Beta:

Brand Filter



Company name :

Region :

Select pollutant : ☒ Select all ☐ COD ☐ NH3-N ☐ pH Level

Filter by brand : ☒ Example Brand ☐ SAC

3 wastewater sources nationwide are currently exceeding standards

ID	Name	Indicator	Value	DateTime
1	Shaoxing Jinxianghui Textile Print&Dyeing CO.,LTD	COD	475.53	2016/10/4 0:00:00
2	Shaoxing Yuejin Printing & Dyeing Co.,Ltd	COD	291.33	2016/10/4 0:00:00
3	Huafu Top Dyed Melange Yarn Co Ltd	COD	198.98	2016/10/4 0:00:00
4	HANGZHOU JIAHAO PRINTING DYEING AND TIDYING CO.,LT	COD	152.71	2016/10/4 0:00:00
5	Xiaoshan Damei printing & dyeing Co., ltd	COD	126.07	2016/10/4 0:00:00
6	Zhejiang Huili dyeing&finishing Co.,Ltd	COD	125.28	2016/10/4 0:00:00
7	Xintiandi Textile Dyeing/Printing(Jiaxing) Co., Lt	COD	117.16	2016/10/4 0:00:00
8	ZHEJIANG JIAYE PRINTING&DYEING CO.,LTD	COD	116.18	2016/10/4 0:00:00
9	Zhejiang Dagang Dyeing & Printing Co., Ltd.	COD	112.58	2016/10/4 0:00:00
10	MSJC Textile Co	COD	107.90	2016/10/6 5:00:00

IPE Online Monitoring Map - Beta:

Facility Detail



Company name :

Region :

Filter by brand : ☐

Example
Brand

☒ SAC

[Return to List](#)

Fuzhou Desheng Knitting&dyeing co.,ltd

Monitoring Point	Monitoring Time	Pollutant	Concentration	Standard
废水处理设施排污口	2016-10-05 23:00:00	NH3-N	6.92	20
	2016-10-05 23:00:00	COD	43.30	200
福州德盛织染有限公司	2016-05-08 23:00:00	COD	95.03	80
	2016-05-08 23:00:00	NH3-N	9.49	10

Historical Data Graph

废水处理设施排污口 COD



THANK YOU!

skeane@nrdc.org

