



WATER PEACE AND SECURITY

Alyssa Offutt

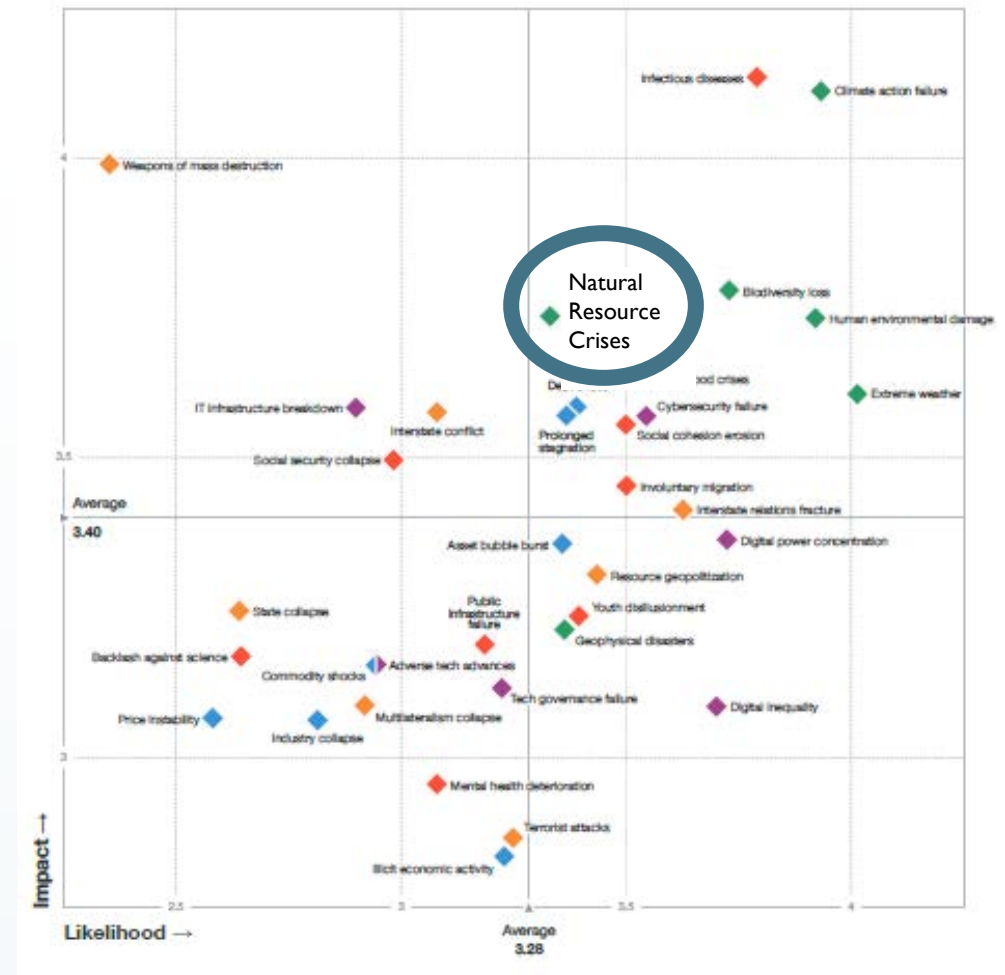
IHE Delft Institute for Water Education

Deltares



Water-Related Risks are Increasing and Complex

- Increased water stress can enhance perceived competition over water resources at all scales
 - Growing population-based and economic water demands
 - Increasing variability and impacts of climate adaptation measures
 - Environmental degradation
 - Insufficient governance and inefficient use
- Competition can facilitate water-related conflict and cooperation based on a range of intervening factors



Risk perception global landscape. Courtesy of the World Economic Forum's *The Global Risks Report 2021*.

Water Peace and Security (WPS) Partners



Ministry of Foreign Affairs of the Netherlands

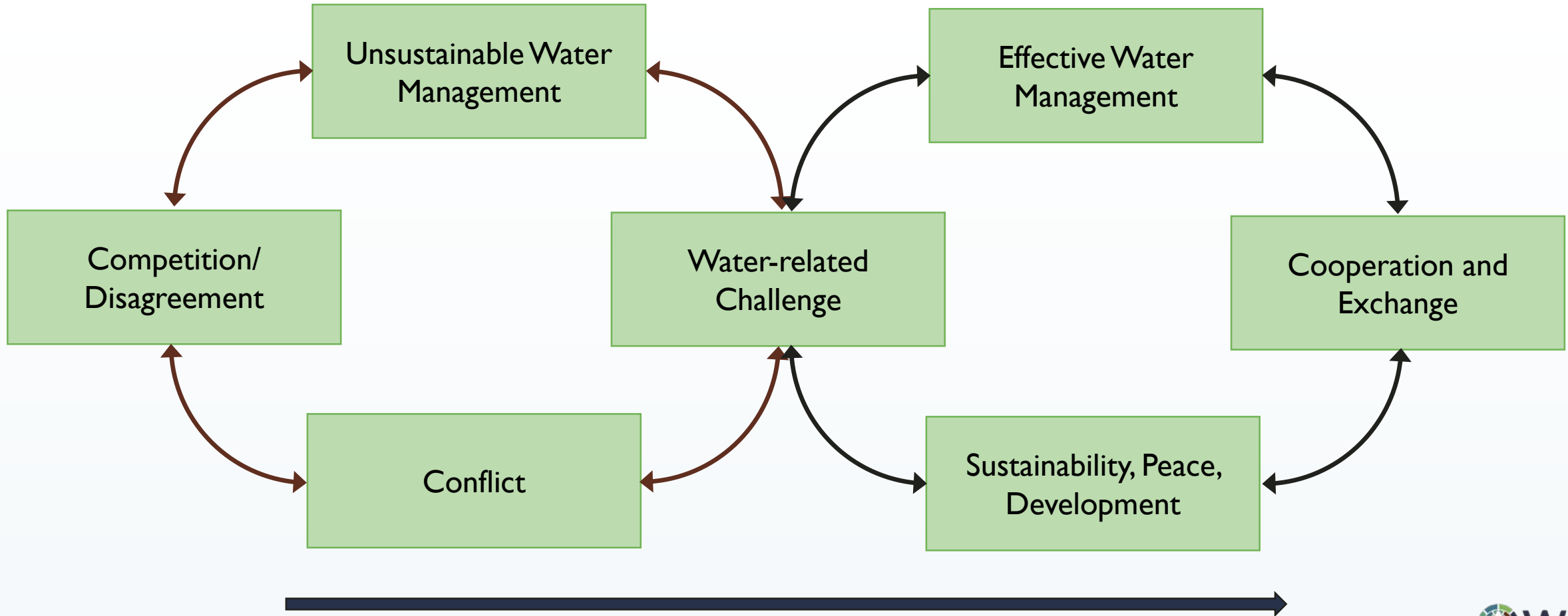


(Lead Partner)

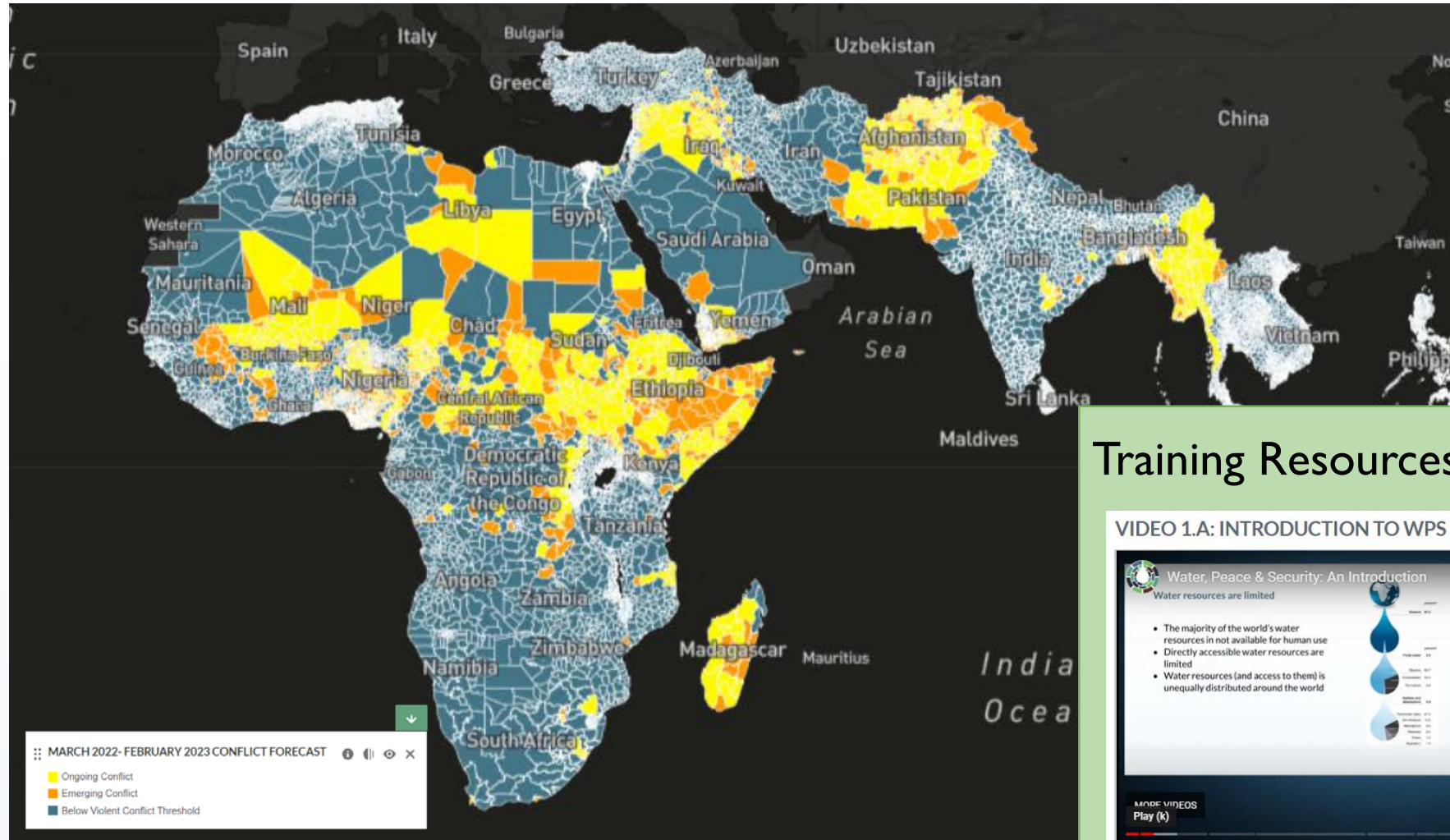


WPS Aim:

To turn vicious cycles of water and conflict into virtuous cycles of water-based peace and cooperation



Global Forecasting to Target Action



Quarterly Analysis

August 25, 2022 | WPS Global Early Warning Tool - August 2022 Quarterly Update
WPS GLOBAL EARLY WARNING TOOL AUGUST 2022 QUARTERLY ANALYSIS

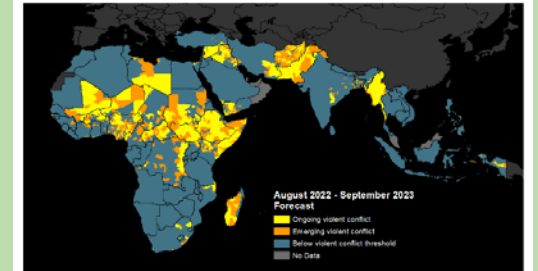


Figure 1. Global Early Warning Tool August 2022 Quarterly Forecast.

Listen to our [Quarterly Analysis Podcast](#).

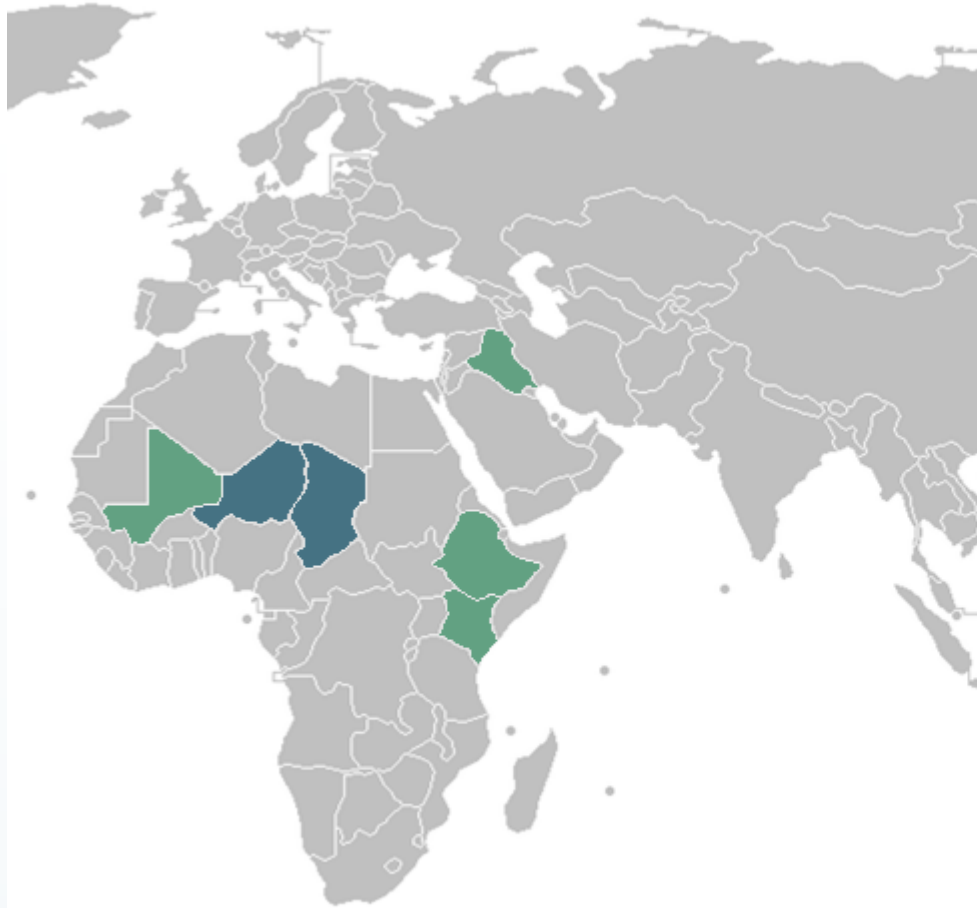
CONFLICT OVERVIEW

PLACES TO WATCH FOR VIOLENT CONFLICT

Training Resources

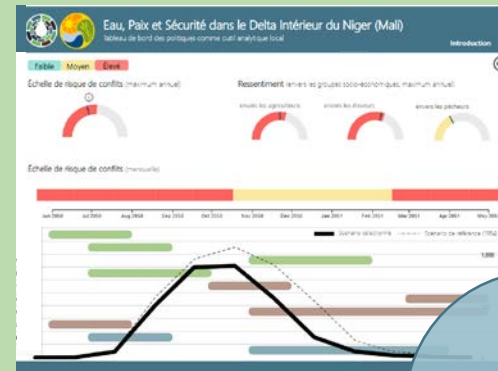
VIDEO 1.A: INTRODUCTION TO WPS E-LEARNING

Integrated Approach for Regional Engagement

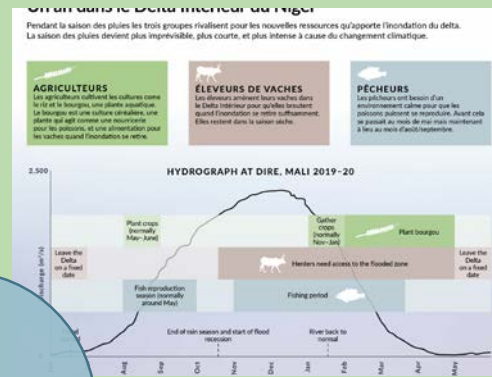


WPS regional engagement in Mali, Iraq, Kenya, Ethiopia (green), and in partnership with GIZ, Niger and Chad (blue).

Understand



Awareness Raising



Act

Capacity Development



Dialogue

