

Catastrophes, Confrontations, and Constraints

Prof Tobias Ide

**Senior Lecturer in Politics and International
Relations, Murdoch University**

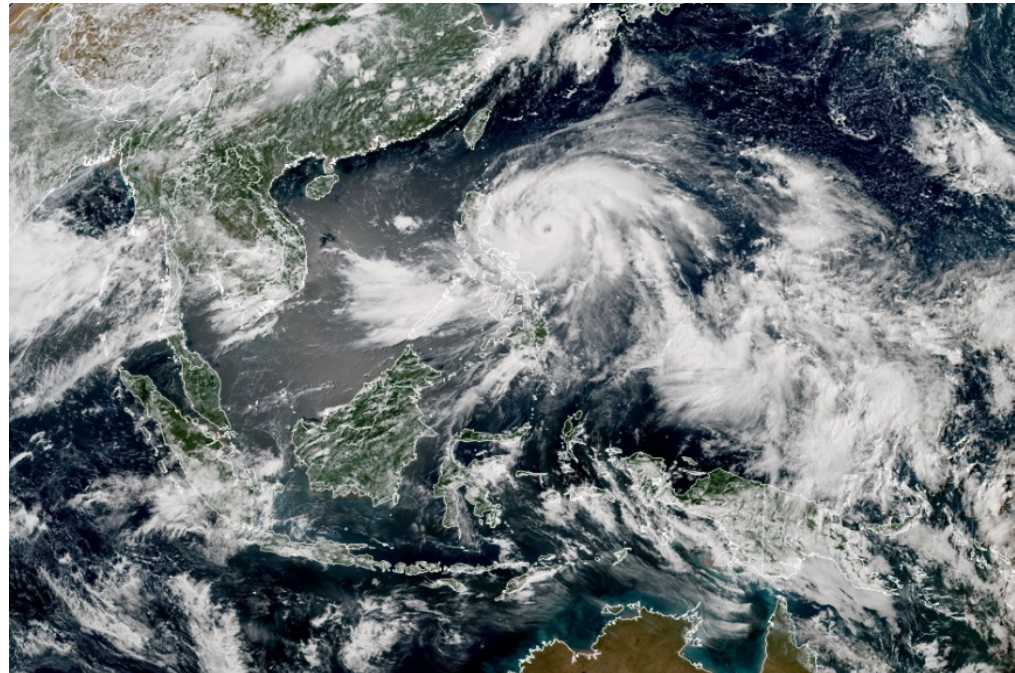
**Specially Appointed Professor for Peace and
Sustainability, Hiroshima University**

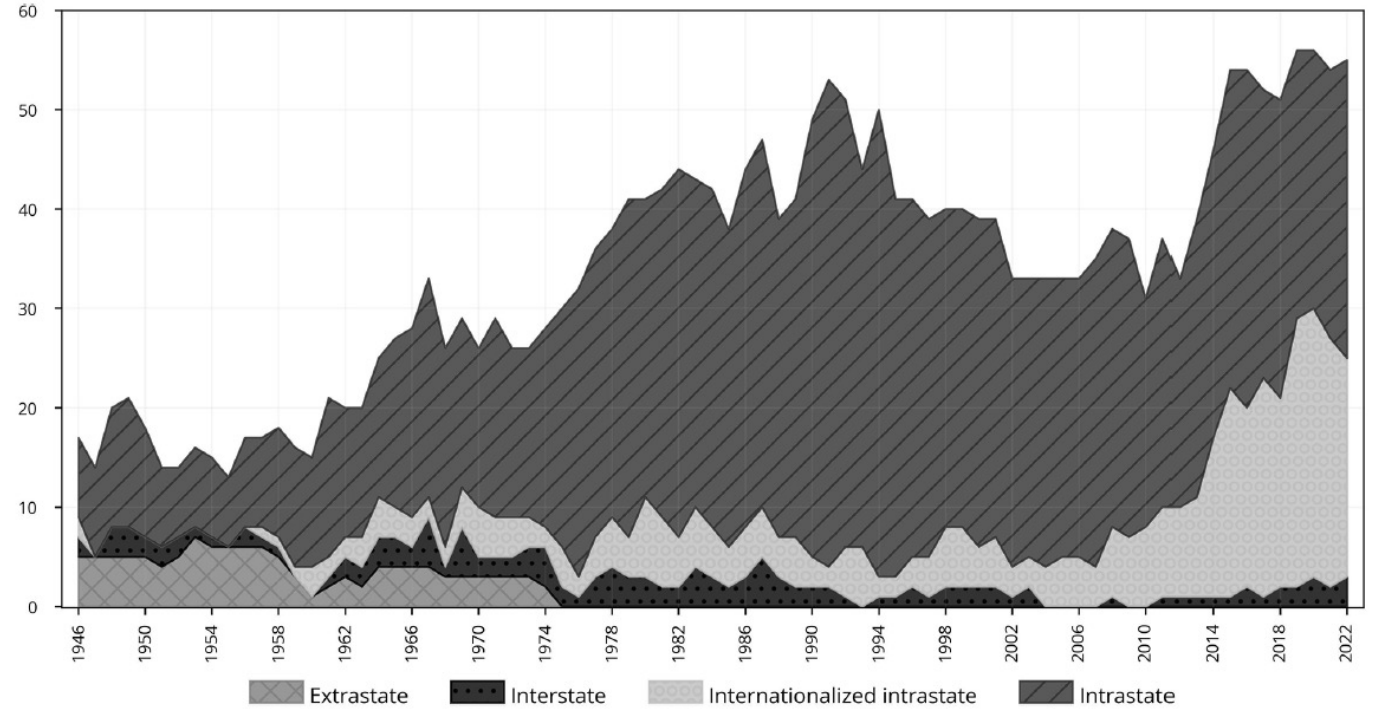
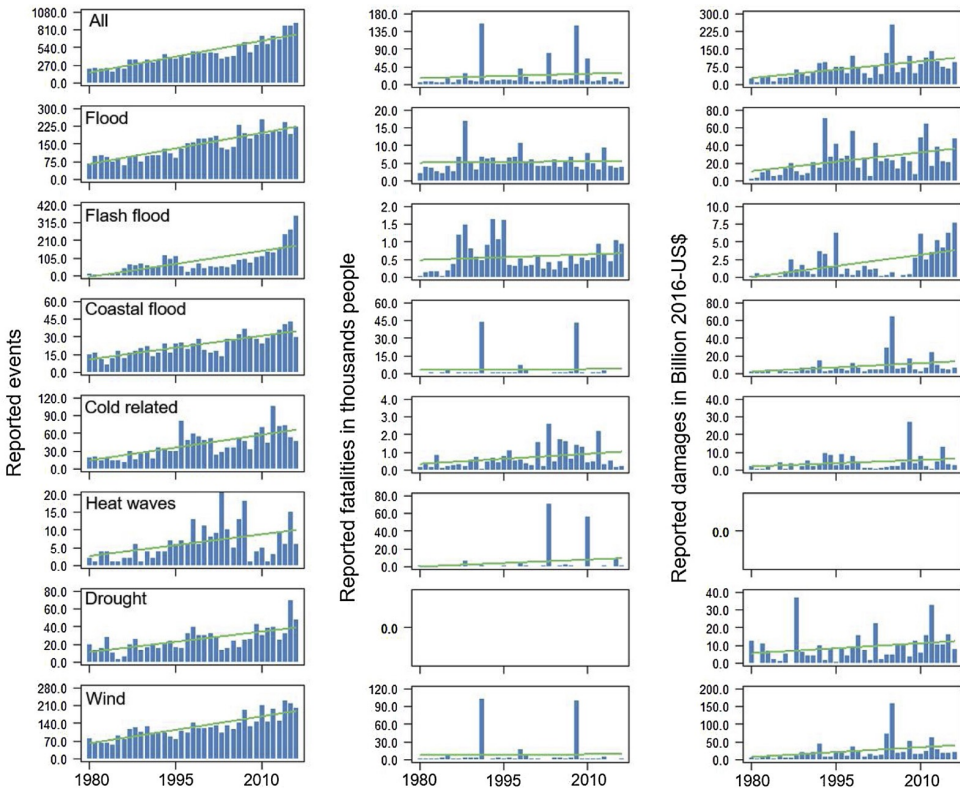
Catastrophes, Confrontations, and Constraints

HOW DISASTERS SHAPE THE
DYNAMICS OF ARMED CONFLICTS

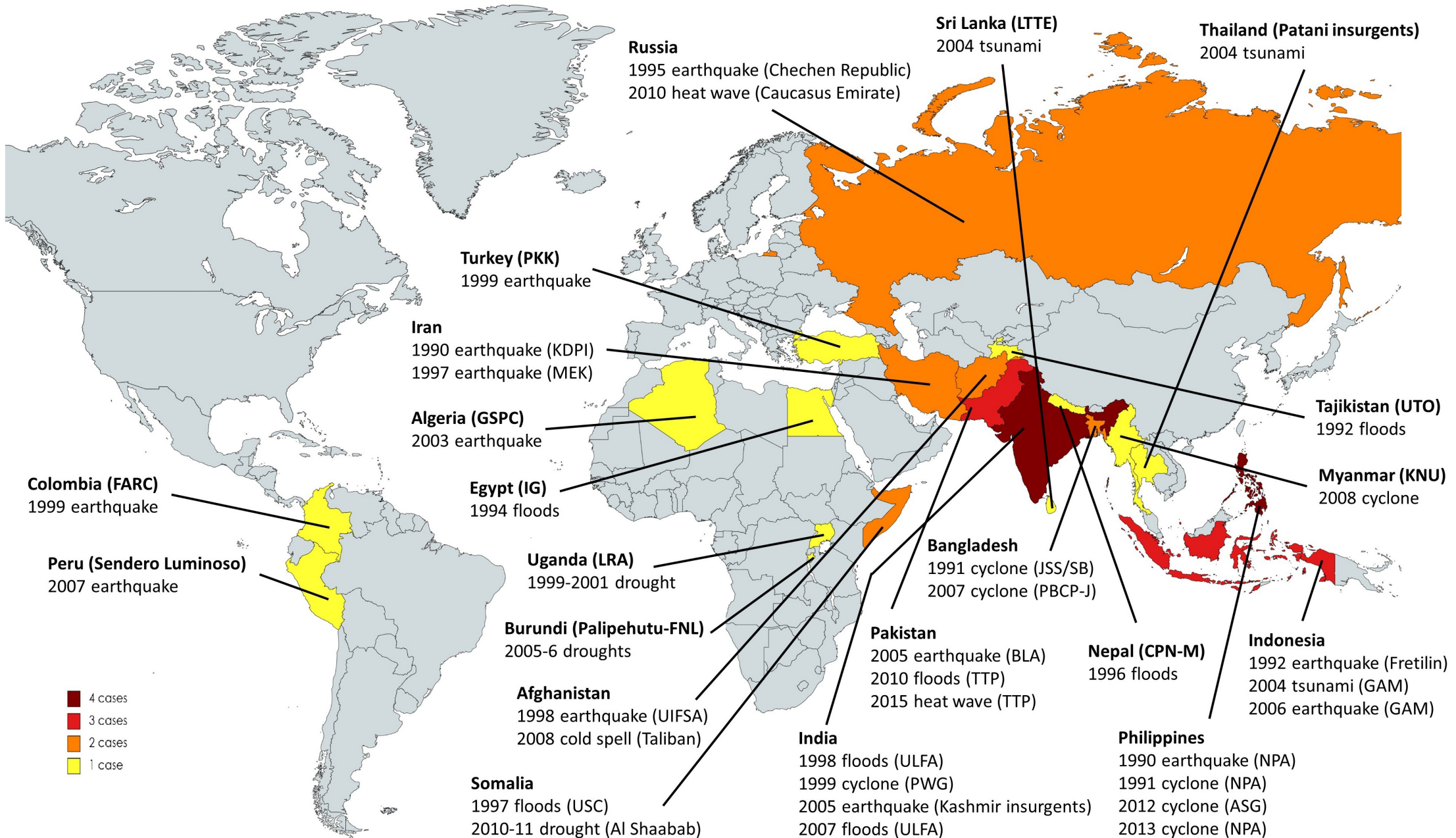
TOBIAS IDE



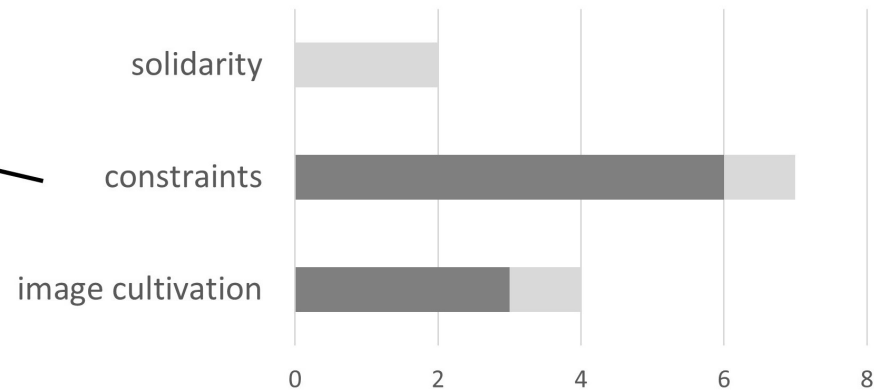
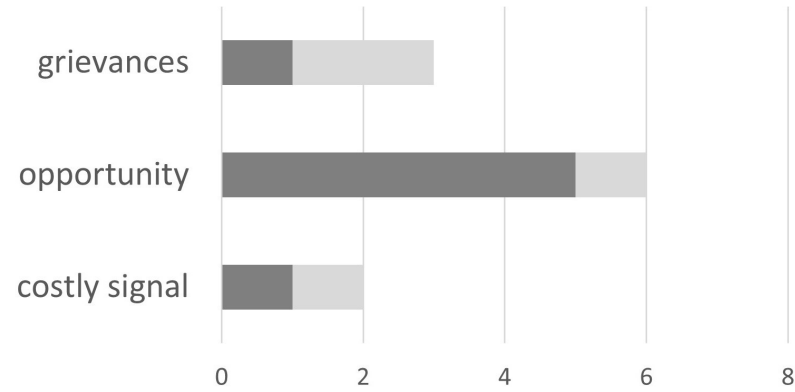
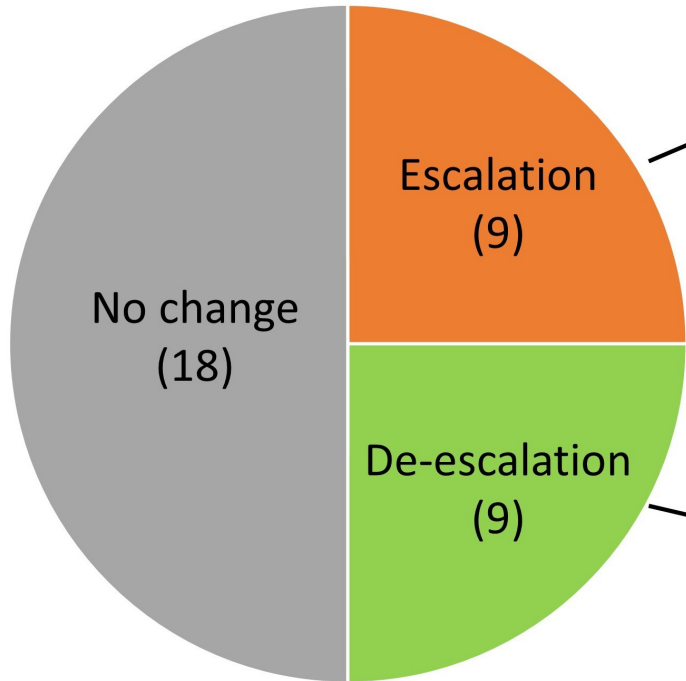




Formetta & Feyen (2019): Empirical evidence of declining global vulnerability to climate-related hazards. *Global Environmental Change* 57(1), p. 1-9.
 Davies et al. (2023): Organized violence 1989–2022, and the return of conflict between states 60(4), online first.

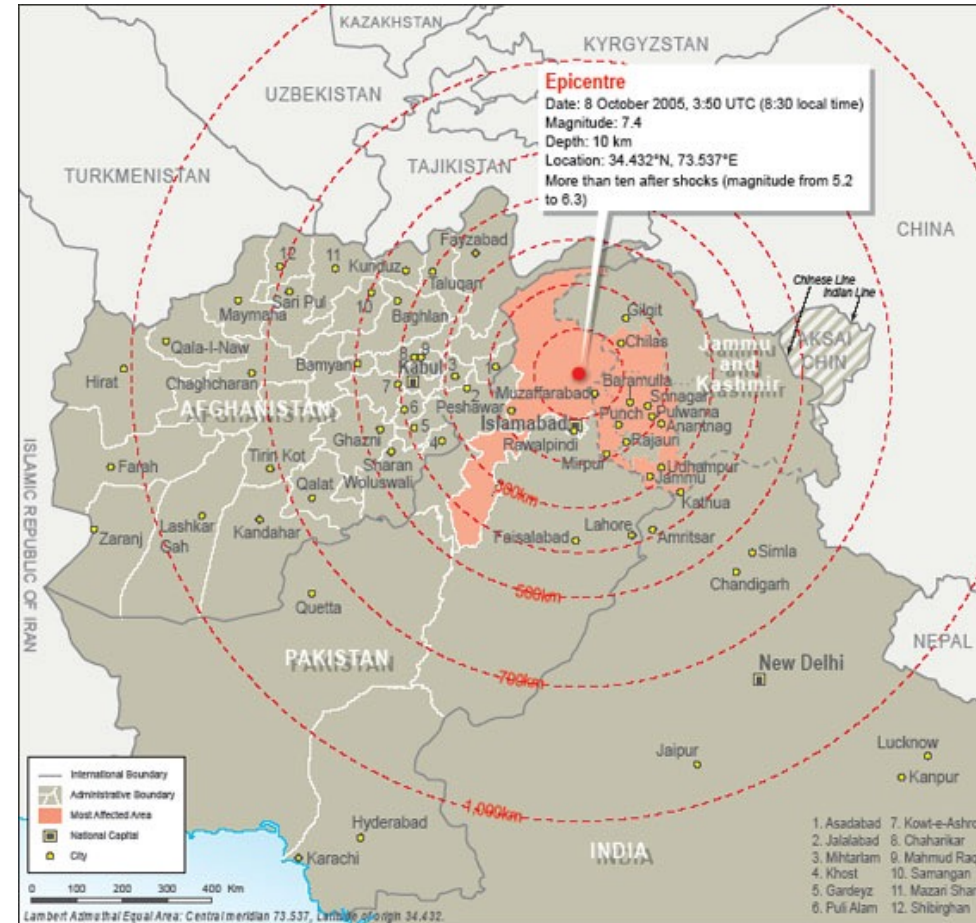
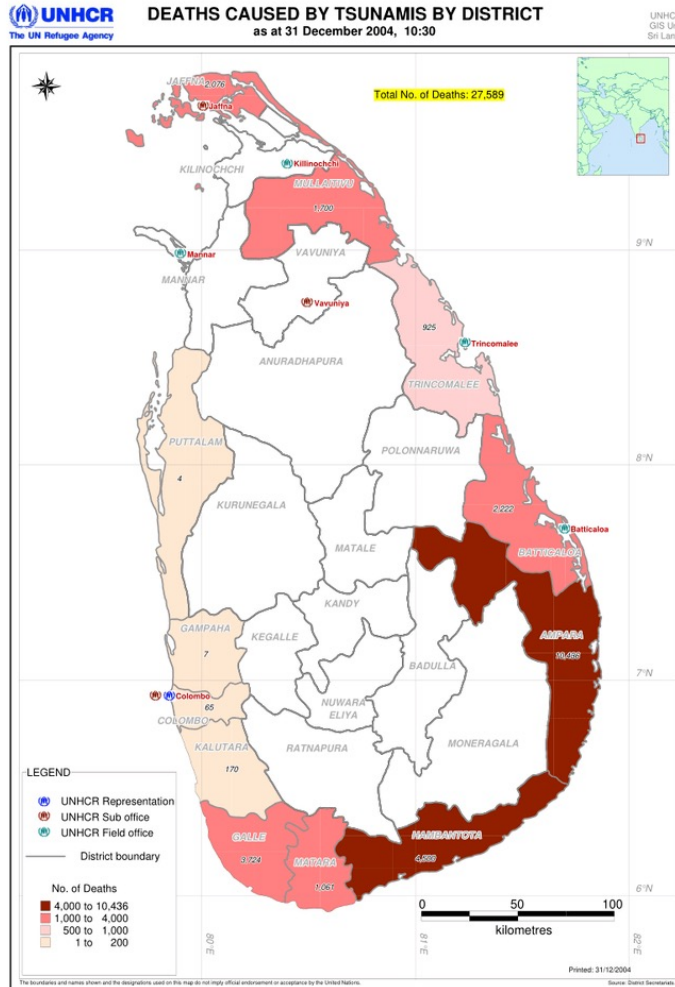


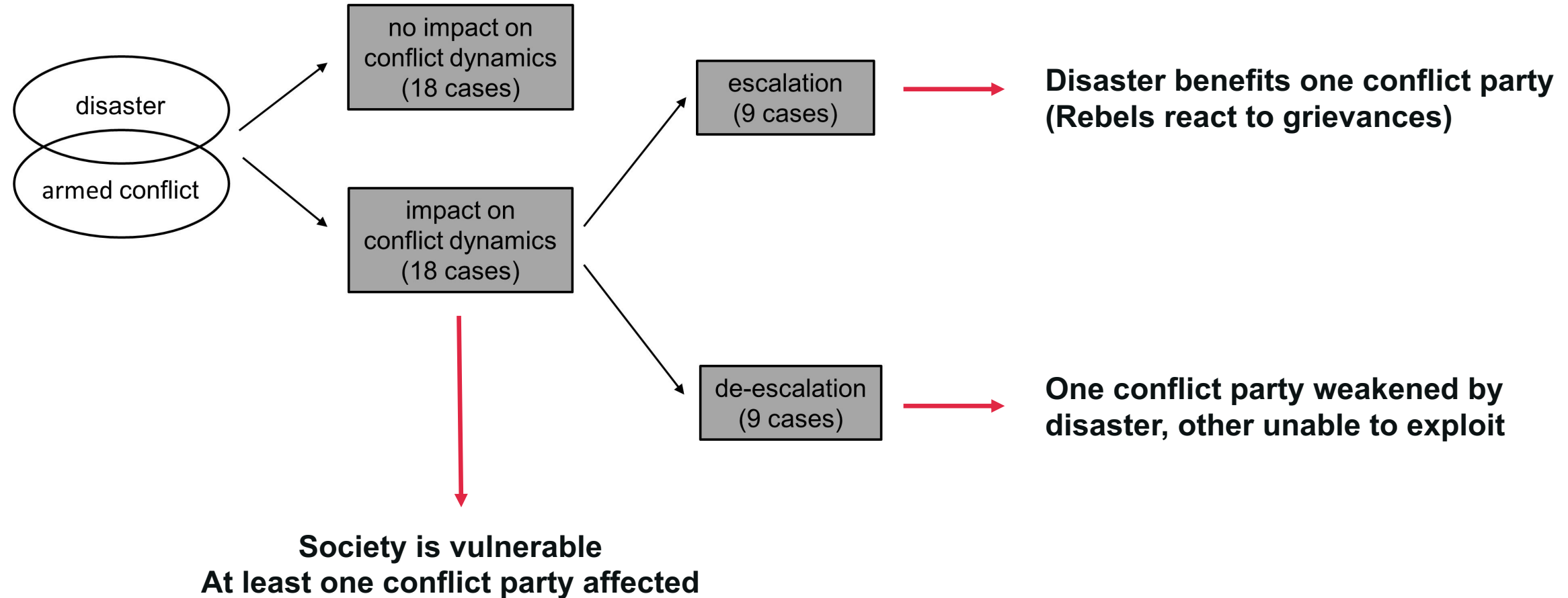
Conflict Dynamics



Sri Lanka, 2004 tsunami

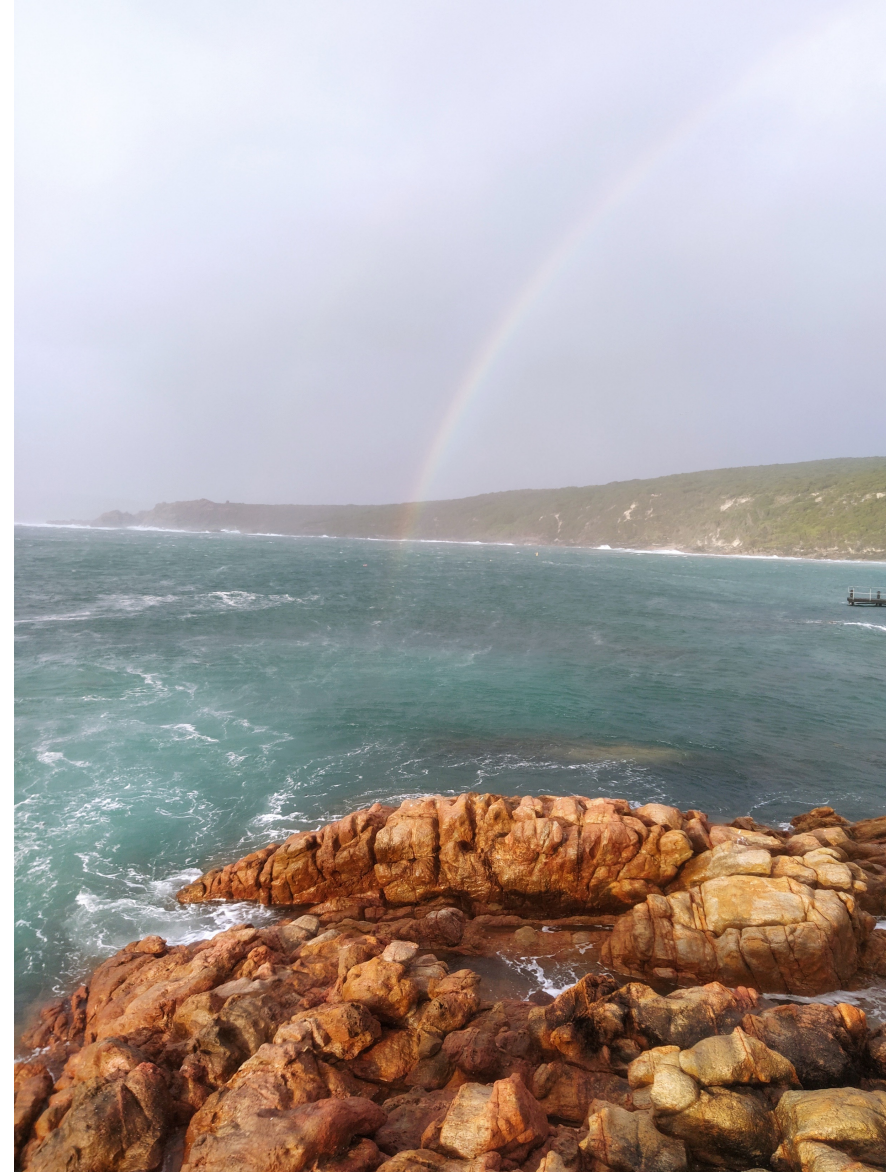
India, 2005 earthquake





Key take away points:

- Disasters increase armed conflict intensity
- Disaster-conflict links are non-deterministic and multi-directional
- Opportunities as key drivers
- Windows of opportunity and risk



15% off a physical copy:

READMIT15

Virtual copy:

<https://doi.org/10.7551/mitpress/14970.001.0001>

Related International Security article:

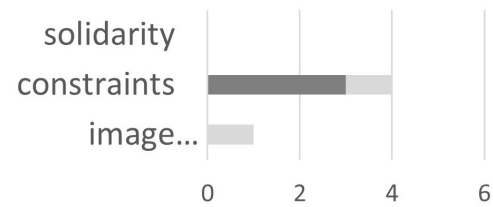
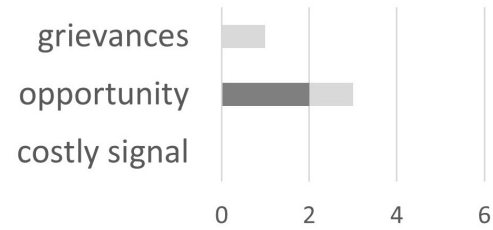
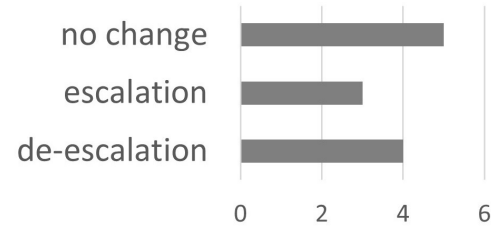
https://doi.org/10.1162/isec_a_00459



Thank you

Tobias Ide tobias.ide@murdoch.edu.au

Slow-onset disasters



Rapid-onset disasters

