



NPS-Paulson Partnership

To Support China's National Park System



National Park Service Regional Offices

Alaska Region
Anchorage Park Service
1000 Commercial Street
Anchorage, AK 99501-2000
907-271-2727

Midwest Region
National Park Service
1700 Jackson Street
Chicago, IL 60604-2001
312-437-5519

National Capital Region
National Park Service
1700 Jackson Street
Washington, DC 20540-2001
202-452-7222

North Atlantic Region
National Park Service
1700 Jackson Street
Washington, DC 20540-2001
202-452-7222

Pacific Northwest Region
National Park Service
1700 Jackson Street
Seattle, WA 98101-2000
206-462-7422

Rocky Mountain Region
National Park Service
1700 Jackson Street
Denver, CO 80202-2000
303-462-7422

Southeast Region
National Park Service
1700 Jackson Street
Atlanta, GA 30303-2000
404-526-7422

Southwest Region
National Park Service
1700 Jackson Street
Phoenix, AZ 85004-2000
602-462-7422

Western Region
National Park Service
1700 Jackson Street
San Francisco, CA 94104-2000
415-556-7422

Abbreviations for National Park System Areas

Alaska Region
AK: Alaska
AD: Adirondack Park
AS: Arctic Slope
AT: Arctic Tundra
AW: Arctic Wildlife
AY: Arctic Yacht Club
AZ: Arizona
BA: Badlands
BB: Badlands
BC: Badlands
BD: Badlands
BE: Badlands
BF: Badlands
BG: Badlands
BH: Badlands
BI: Badlands
BJ: Badlands
BK: Badlands
BL: Badlands
BM: Badlands
BN: Badlands
BO: Badlands
BP: Badlands
BQ: Badlands
BR: Badlands
BS: Badlands
BT: Badlands
BU: Badlands
BV: Badlands
BW: Badlands
BX: Badlands
BY: Badlands
BZ: Badlands
CA: California
CB: California
CC: California
CD: California
CE: California
CF: California
CG: California
CH: California
CI: California
CJ: California
CK: California
CL: California
CM: California
CN: California
CO: California
CP: California
CQ: California
CR: California
CS: California
CT: California
CU: California
CV: California
CW: California
CX: California
CY: California
CZ: California
DA: Delaware
DB: Delaware
DC: Delaware
DD: Delaware
DE: Delaware
DF: Delaware
DG: Delaware
DH: Delaware
DI: Delaware
DJ: Delaware
DK: Delaware
DL: Delaware
DM: Delaware
DN: Delaware
DO: Delaware
DP: Delaware
DQ: Delaware
DR: Delaware
DS: Delaware
DT: Delaware
DU: Delaware
DV: Delaware
DW: Delaware
DX: Delaware
DY: Delaware
DZ: Delaware
EA: Eastern
EB: Eastern
EC: Eastern
ED: Eastern
EE: Eastern
EF: Eastern
EG: Eastern
EH: Eastern
EI: Eastern
EJ: Eastern
EK: Eastern
EL: Eastern
EM: Eastern
EN: Eastern
EO: Eastern
EP: Eastern
EQ: Eastern
ER: Eastern
ES: Eastern
ET: Eastern
EU: Eastern
EV: Eastern
EW: Eastern
EX: Eastern
EY: Eastern
EZ: Eastern
FA: Florida
FB: Florida
FC: Florida
FD: Florida
FE: Florida
FF: Florida
FG: Florida
FH: Florida
FI: Florida
FJ: Florida
FK: Florida
FL: Florida
FM: Florida
FN: Florida
FO: Florida
FP: Florida
FQ: Florida
FR: Florida
FS: Florida
FT: Florida
FU: Florida
FV: Florida
FW: Florida
FX: Florida
FY: Florida
FZ: Florida
GA: Georgia
GB: Georgia
GC: Georgia
GD: Georgia
GE: Georgia
GF: Georgia
GG: Georgia
GH: Georgia
GI: Georgia
GJ: Georgia
GK: Georgia
GL: Georgia
GM: Georgia
GN: Georgia
GO: Georgia
GP: Georgia
GQ: Georgia
GR: Georgia
GS: Georgia
GT: Georgia
GU: Georgia
GV: Georgia
GW: Georgia
GX: Georgia
GY: Georgia
GZ: Georgia
HA: Hawaii
HB: Hawaii
HC: Hawaii
HD: Hawaii
HE: Hawaii
HF: Hawaii
HG: Hawaii
HH: Hawaii
HI: Hawaii
HJ: Hawaii
HK: Hawaii
HL: Hawaii
HM: Hawaii
HN: Hawaii
HO: Hawaii
HP: Hawaii
HQ: Hawaii
HR: Hawaii
HS: Hawaii
HT: Hawaii
HU: Hawaii
HV: Hawaii
HW: Hawaii
HX: Hawaii
HY: Hawaii
HZ: Hawaii
IA: Iowa
IB: Iowa
IC: Iowa
ID: Iowa
IE: Iowa
IF: Iowa
IG: Iowa
IH: Iowa
II: Iowa
IJ: Iowa
IK: Iowa
IL: Iowa
IM: Iowa
IN: Iowa
IO: Iowa
IP: Iowa
IQ: Iowa
IR: Iowa
IS: Iowa
IT: Iowa
IU: Iowa
IV: Iowa
IW: Iowa
IX: Iowa
IY: Iowa
IZ: Iowa
JA: Japan
JB: Japan
JC: Japan
JD: Japan
JE: Japan
JF: Japan
JG: Japan
JH: Japan
JI: Japan
JJ: Japan
JK: Japan
JL: Japan
JM: Japan
JN: Japan
JO: Japan
JP: Japan
JQ: Japan
JR: Japan
JS: Japan
JT: Japan
JU: Japan
JV: Japan
JW: Japan
JX: Japan
JY: Japan
JZ: Japan
KA: Kansas
KB: Kansas
KC: Kansas
KD: Kansas
KE: Kansas
KF: Kansas
KG: Kansas
KH: Kansas
KI: Kansas
KJ: Kansas
KK: Kansas
KL: Kansas
KM: Kansas
KN: Kansas
KO: Kansas
KP: Kansas
KQ: Kansas
KR: Kansas
KS: Kansas
KT: Kansas
KU: Kansas
KV: Kansas
KW: Kansas
KX: Kansas
KY: Kansas
KZ: Kansas
LA: Louisiana
LB: Louisiana
LC: Louisiana
LD: Louisiana
LE: Louisiana
LF: Louisiana
LG: Louisiana
LH: Louisiana
LI: Louisiana
LJ: Louisiana
LK: Louisiana
LL: Louisiana
LM: Louisiana
LN: Louisiana
LO: Louisiana
LP: Louisiana
LQ: Louisiana
LR: Louisiana
LS: Louisiana
LT: Louisiana
LU: Louisiana
LV: Louisiana
LW: Louisiana
LX: Louisiana
LY: Louisiana
LZ: Louisiana
MA: Massachusetts
MB: Massachusetts
MC: Massachusetts
MD: Massachusetts
ME: Massachusetts
MF: Massachusetts
MG: Massachusetts
MH: Massachusetts
MI: Massachusetts
MJ: Massachusetts
MK: Massachusetts
ML: Massachusetts
MM: Massachusetts
MN: Massachusetts
MO: Massachusetts
MP: Massachusetts
MQ: Massachusetts
MR: Massachusetts
MS: Massachusetts
MT: Massachusetts
MU: Massachusetts
MV: Massachusetts
MW: Massachusetts
MX: Massachusetts
MY: Massachusetts
MZ: Massachusetts
NA: Nebraska
NB: Nebraska
NC: Nebraska
ND: Nebraska
NE: Nebraska
NF: Nebraska
NG: Nebraska
NH: Nebraska
NI: Nebraska
NJ: Nebraska
NK: Nebraska
NL: Nebraska
NM: Nebraska
NN: Nebraska
NO: Nebraska
NP: Nebraska
NQ: Nebraska
NR: Nebraska
NS: Nebraska
NT: Nebraska
NU: Nebraska
NV: Nebraska
NW: Nebraska
NX: Nebraska
NY: Nebraska
NZ: Nebraska
OA: Oregon
OB: Oregon
OC: Oregon
OD: Oregon
OE: Oregon
OF: Oregon
OG: Oregon
OH: Oregon
OI: Oregon
OJ: Oregon
OK: Oregon
OL: Oregon
OM: Oregon
ON: Oregon
OO: Oregon
OP: Oregon
OQ: Oregon
OR: Oregon
OS: Oregon
OT: Oregon
OU: Oregon
OV: Oregon
OW: Oregon
OX: Oregon
OY: Oregon
OZ: Oregon
PA: Pennsylvania
PB: Pennsylvania
PC: Pennsylvania
PD: Pennsylvania
PE: Pennsylvania
PF: Pennsylvania
PG: Pennsylvania
PH: Pennsylvania
PI: Pennsylvania
PJ: Pennsylvania
PK: Pennsylvania
PL: Pennsylvania
PM: Pennsylvania
PN: Pennsylvania
PO: Pennsylvania
PP: Pennsylvania
PQ: Pennsylvania
PR: Pennsylvania
PS: Pennsylvania
PT: Pennsylvania
PU: Pennsylvania
PV: Pennsylvania
PW: Pennsylvania
PX: Pennsylvania
PY: Pennsylvania
PZ: Pennsylvania
QA: Quebec
QB: Quebec
QC: Quebec
QD: Quebec
QE: Quebec
QF: Quebec
QG: Quebec
QH: Quebec
QI: Quebec
QJ: Quebec
QK: Quebec
QL: Quebec
QM: Quebec
QN: Quebec
QO: Quebec
QP: Quebec
QQ: Quebec
QR: Quebec
QS: Quebec
QT: Quebec
QU: Quebec
QV: Quebec
QW: Quebec
QX: Quebec
QY: Quebec
QZ: Quebec
RA: Rhode Island
RB: Rhode Island
RC: Rhode Island
RD: Rhode Island
RE: Rhode Island
RF: Rhode Island
RG: Rhode Island
RH: Rhode Island
RI: Rhode Island
RJ: Rhode Island
RK: Rhode Island
RL: Rhode Island
RM: Rhode Island
RN: Rhode Island
RO: Rhode Island
RP: Rhode Island
RQ: Rhode Island
RR: Rhode Island
RS: Rhode Island
RT: Rhode Island
RU: Rhode Island
RV: Rhode Island
RW: Rhode Island
RX: Rhode Island
RY: Rhode Island
RZ: Rhode Island
SA: South Carolina
SB: South Carolina
SC: South Carolina
SD: South Carolina
SE: South Carolina
SF: South Carolina
SG: South Carolina
SH: South Carolina
SI: South Carolina
SJ: South Carolina
SK: South Carolina
SL: South Carolina
SM: South Carolina
SN: South Carolina
SO: South Carolina
SP: South Carolina
SQ: South Carolina
SR: South Carolina
SS: South Carolina
ST: South Carolina
SU: South Carolina
SV: South Carolina
SW: South Carolina
SX: South Carolina
SY: South Carolina
SZ: South Carolina
TA: Tennessee
TB: Tennessee
TC: Tennessee
TD: Tennessee
TE: Tennessee
TF: Tennessee
TG: Tennessee
TH: Tennessee
TI: Tennessee
TJ: Tennessee
TK: Tennessee
TL: Tennessee
TM: Tennessee
TN: Tennessee
TO: Tennessee
TP: Tennessee
TQ: Tennessee
TR: Tennessee
TS: Tennessee
TT: Tennessee
TU: Tennessee
TV: Tennessee
TW: Tennessee
TX: Tennessee
TY: Tennessee
TZ: Tennessee
UA: Utah
UB: Utah
UC: Utah
UD: Utah
UE: Utah
UF: Utah
UG: Utah
UH: Utah
UI: Utah
UJ: Utah
UK: Utah
UL: Utah
UM: Utah
UN: Utah
UO: Utah
UP: Utah
UQ: Utah
UR: Utah
US: Utah
UT: Utah
UU: Utah
UV: Utah
UW: Utah
UX: Utah
UY: Utah
UZ: Utah
VA: Virginia
VB: Virginia
VC: Virginia
VD: Virginia
VE: Virginia
VF: Virginia
VG: Virginia
VH: Virginia
VI: Virginia
VJ: Virginia
VK: Virginia
VL: Virginia
VM: Virginia
VN: Virginia
VO: Virginia
VP: Virginia
VQ: Virginia
VR: Virginia
VS: Virginia
VT: Virginia
VU: Virginia
VV: Virginia
VW: Virginia
VX: Virginia
VY: Virginia
VZ: Virginia
WA: Washington
WB: Washington
WC: Washington
WD: Washington
WE: Washington
WF: Washington
WG: Washington
WH: Washington
WI: Washington
WJ: Washington
WK: Washington
WL: Washington
WM: Washington
WN: Washington
WO: Washington
WP: Washington
WQ: Washington
WR: Washington
WS: Washington
WT: Washington
WU: Washington
WV: Washington
WW: Washington
WX: Washington
WY: Washington
WZ: Washington
XA: Alaska
XB: Alaska
XC: Alaska
XD: Alaska
XE: Alaska
XF: Alaska
XG: Alaska
XH: Alaska
XI: Alaska
XJ: Alaska
XK: Alaska
XL: Alaska
XM: Alaska
XN: Alaska
XO: Alaska
XP: Alaska
XQ: Alaska
XR: Alaska
XS: Alaska
XT: Alaska
XU: Alaska
XV: Alaska
XW: Alaska
XX: Alaska
XY: Alaska
XZ: Alaska
YA: Yukon
YB: Yukon
YC: Yukon
YD: Yukon
YE: Yukon
YF: Yukon
YG: Yukon
YH: Yukon
YI: Yukon
YJ: Yukon
YK: Yukon
YL: Yukon
YM: Yukon
YN: Yukon
YO: Yukon
YP: Yukon
YQ: Yukon
YR: Yukon
YS: Yukon
YT: Yukon
YU: Yukon
YV: Yukon
YW: Yukon
YX: Yukon
YY: Yukon
YZ: Yukon
ZA: Zambia
ZB: Zambia
ZC: Zambia
ZD: Zambia
ZE: Zambia
ZF: Zambia
ZG: Zambia
ZH: Zambia
ZI: Zambia
ZJ: Zambia
ZK: Zambia
ZL: Zambia

419 national park units – many different models

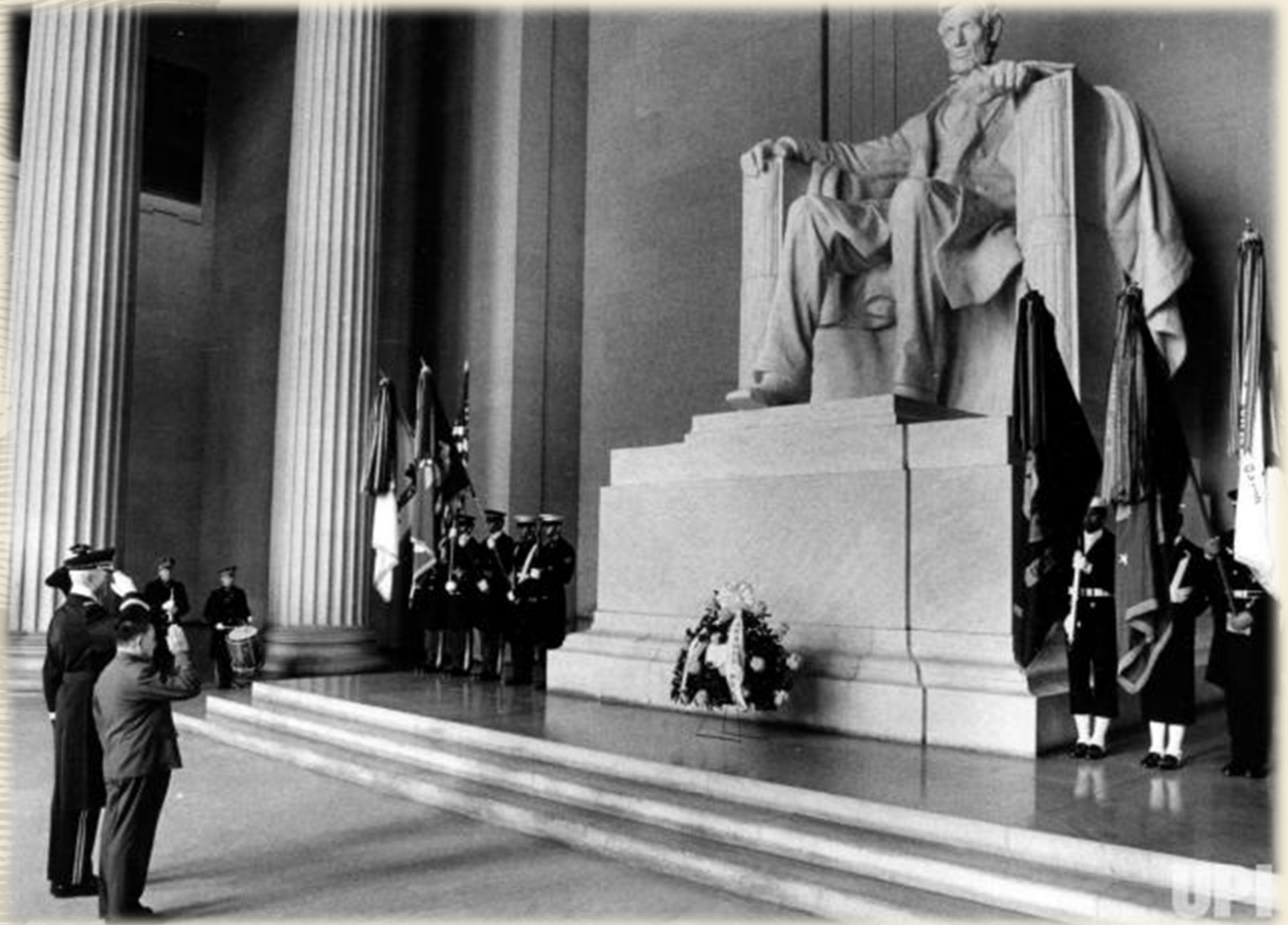


FIND YOUR
PARK

NPS **NEXT**
A SECOND CENTURY OF SERVICE

找你喜欢的
公园

Dawn of Diplomatic Relations between the PRC & the US, 1979



Yellowstone NP visit to Chengdu -1988



NPS-China Bilateral agreement, Beijing, 1998



1st China-US Sister Park, 2006



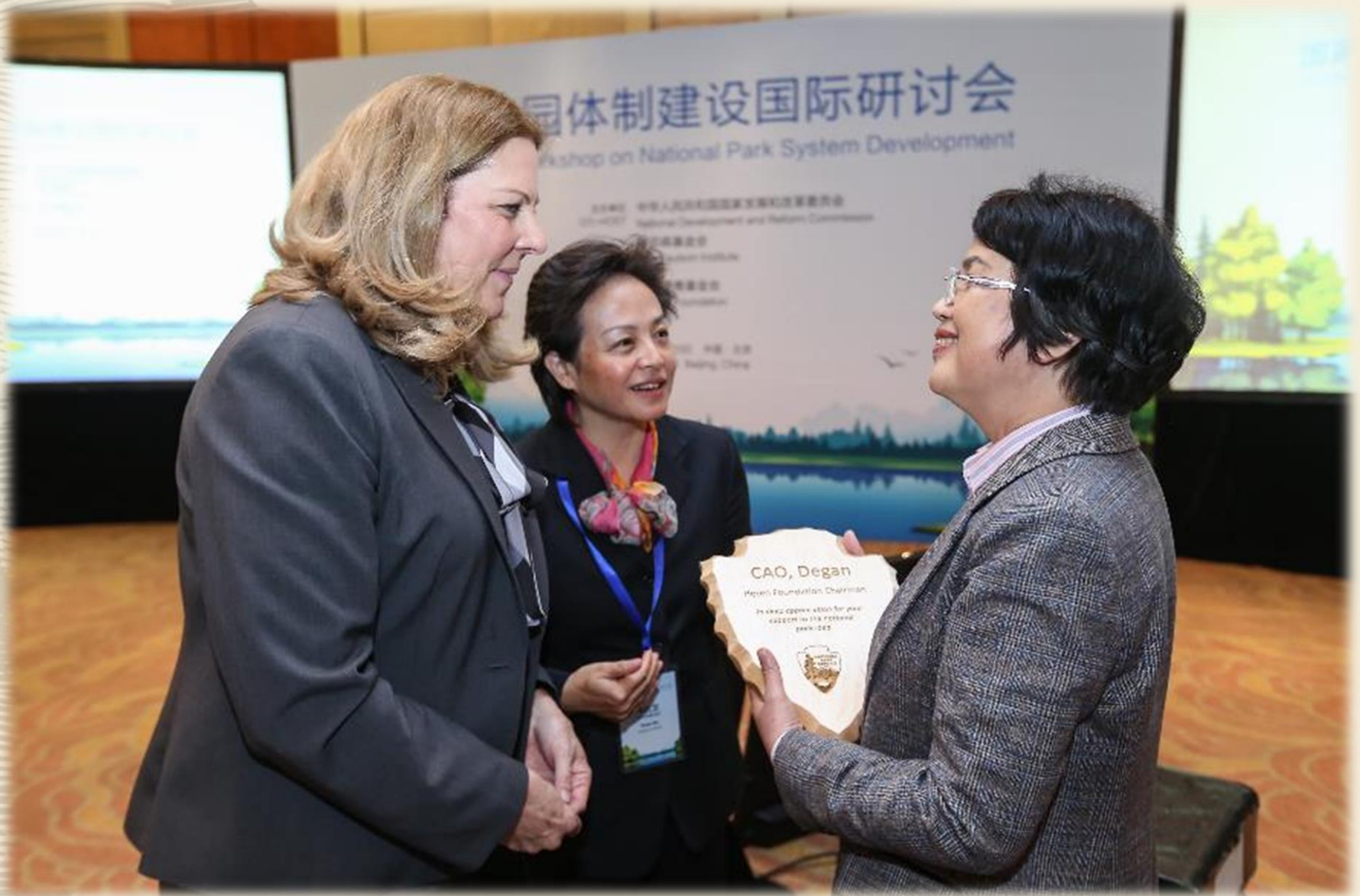
South China Karst visit to Mammoth Cave NP, 2010



U.S. Interior Secretary Jewel's visit to Baihuashan NP, 2015



NPS Deputy Director with Rose Niu in Yunnan, 2015



China-NDRC visit to Grand Teton NP, 2017



China-NDRC visit to Denali NP, 2018



Small Seed Planted in Yunnan, 1998



First Pilot National Park in Yunnan, 2004



11 Pilot National Parks, 2015 - 2018

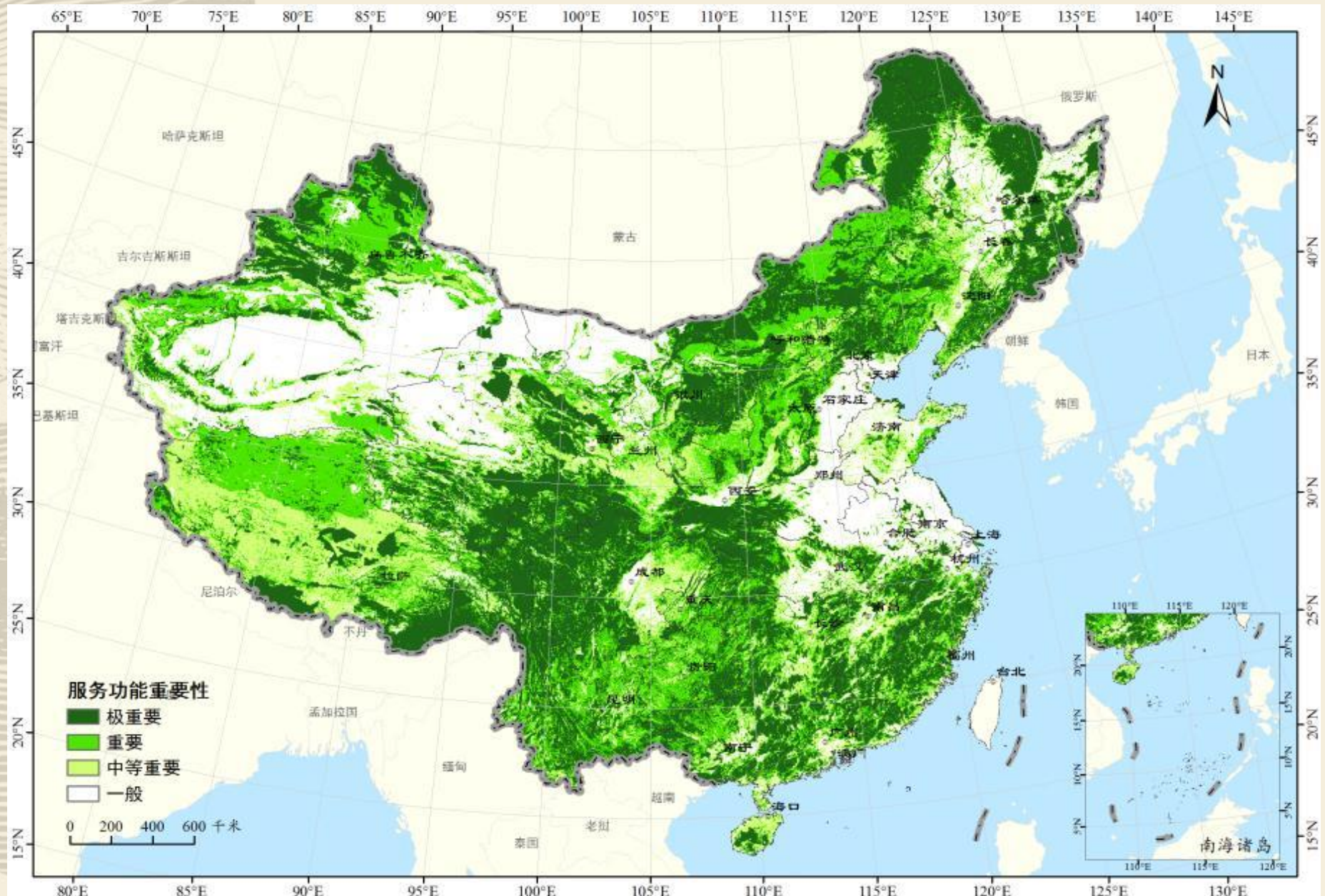


Reform Governance and Management

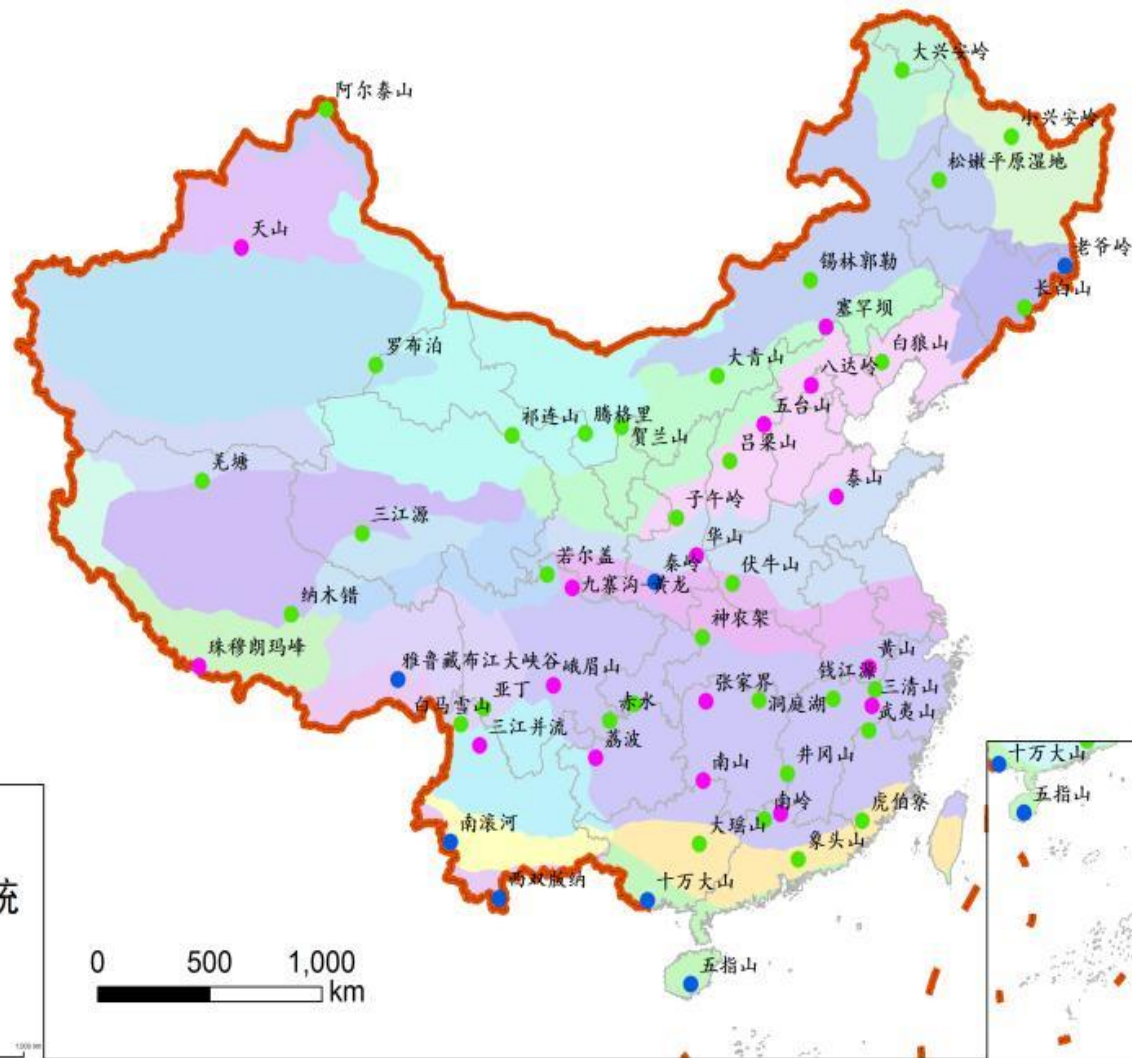
- Consolidate governance structure – MNR + NPS
- Reform protected area system – from 13 to 3 categories
- Reform property right / land tenure registration
- Unify spatial planning standards and practices
- Develop new legislations and policies
- Increase investment and financing
- Enhance management capacity



Spatial Planning in National Level



Candidates for Future National Parks



- 6 Indicators
- 56 TNP
- 10 MNPs





三江源国家公园

THREE-RIVER-SOURCE NATIONAL PARK

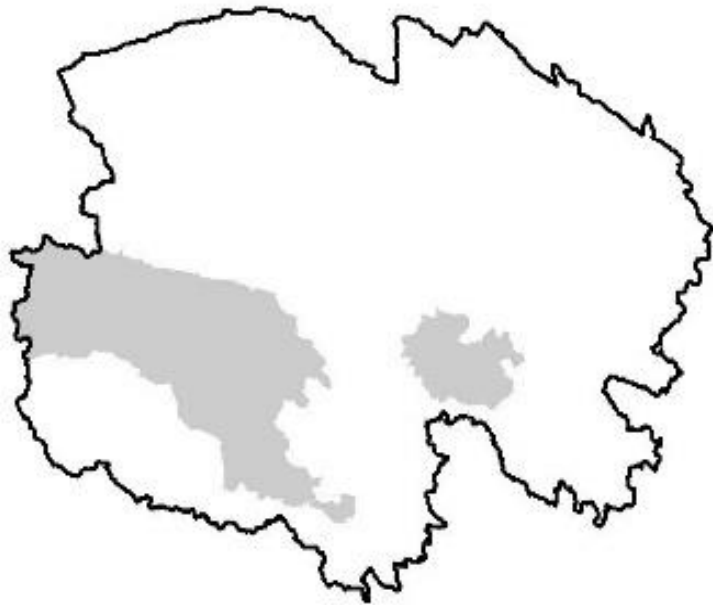
People's Republic of China

The map shows the following countries and regions:

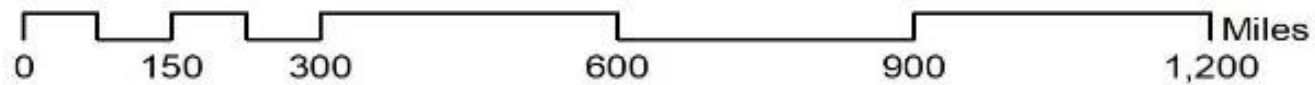
- Neighboring Countries:** Kazakhstan, Mongolia, North Korea, South Korea, Japan, Philippines, Laos, Myanmar (Burma), India, Nepal, Bhutan, Bangladesh, Vietnam, and Taiwan.
- Provinces and Regions:** Heilongjiang, Jilin, Liaoning, Nei Mongol, Beijing, Tianjin, Shandong, Henan, Hubei, Hunan, Jiangsu, Anhui, Jiangxi, Fujian, Guangdong, Guangxi, Yunnan, Sichuan, Shaanxi, Shanxi, Hebei, Inner Mongolia, Gansu, Xinjiang (Sinkiang), Qinghai, Tibet (Kizang), and Hainan.
- Major Rivers:** Yellow River, Yangtze River, and Mekong River.
- Major Cities:** Harbin, Changchun, Shenyang, Beijing, Tianjin, Jinan, Zhengzhou, Nanjing, Shanghai, Hong Kong, and Macao.
- Other Labels:** Bay of Bengal, South China Sea, East China Sea, and Tropical Cancer.

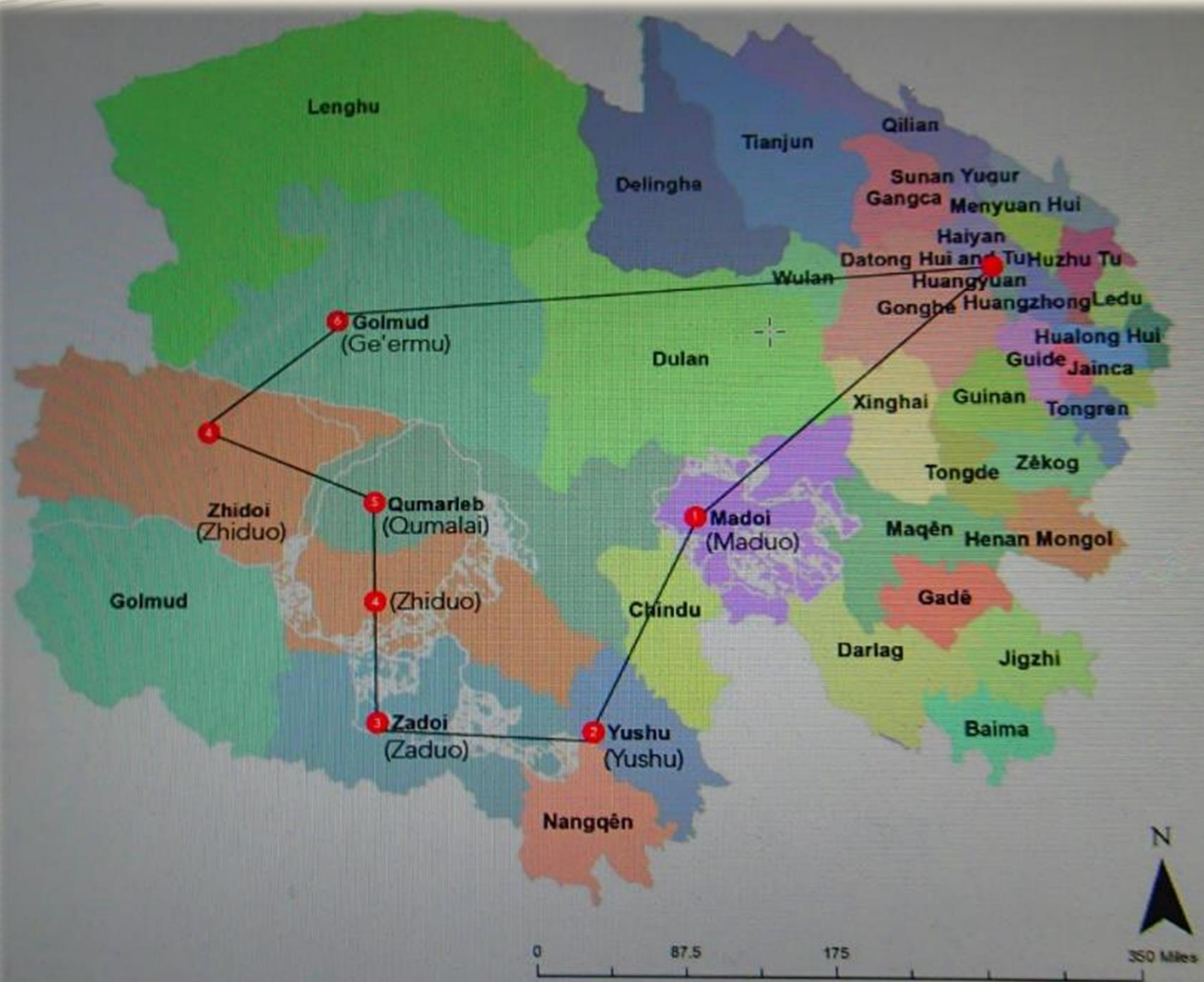
China

QINGHAI



TEXAS











花石峡

Hua shi xia

མཛེ་མཁོ་ར་མར་།

95 km

玛 多

Ma duo

མ་ལྷོ་།

172 km

玉 树

Yu shu

ཡུ་ཤུ་།

481 km

293

km































巴颜喀拉山

海拔4829m

中铁七局三公司

祝您一路平安





















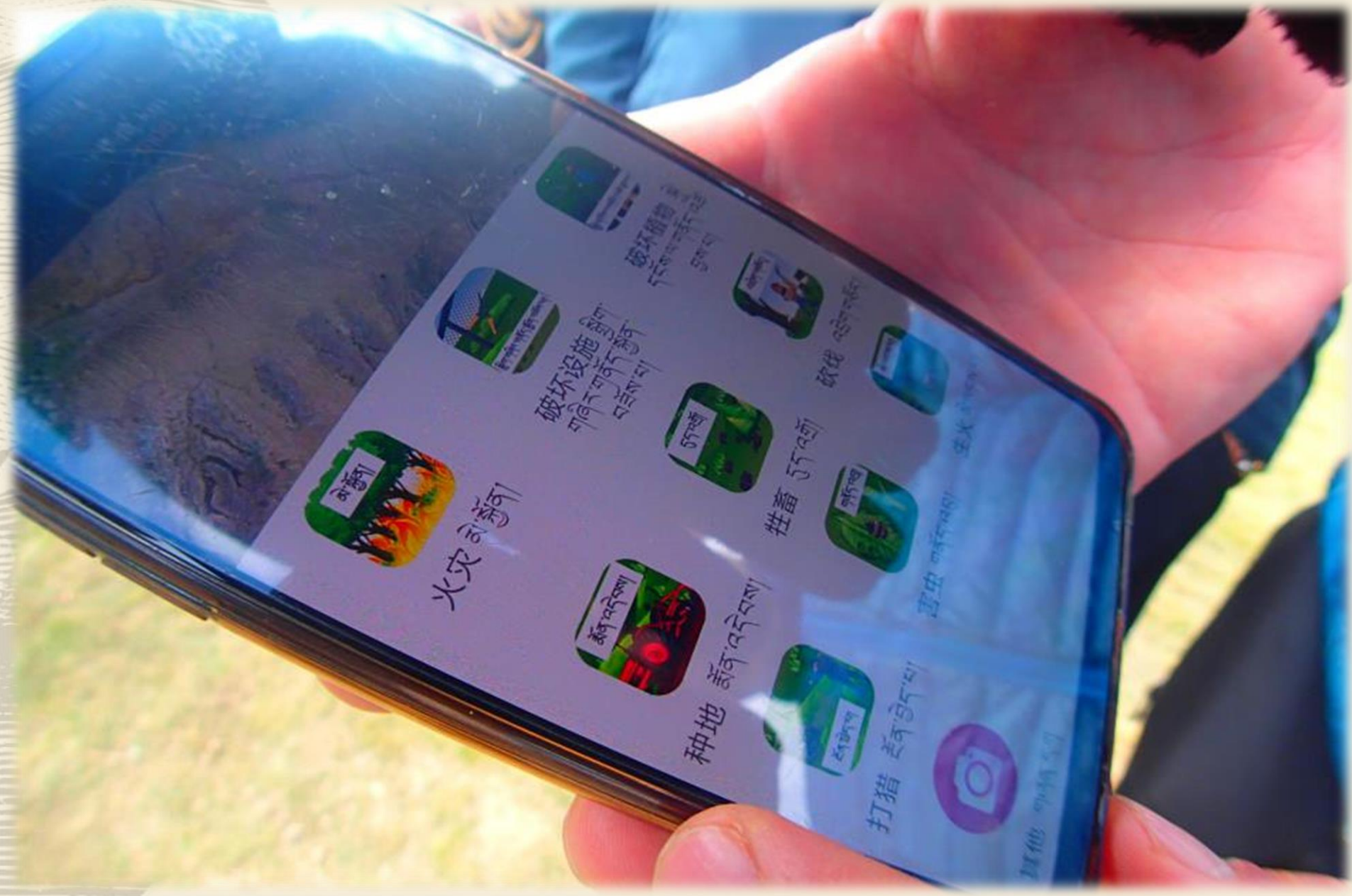












火灾 མེ་ཁྲོན།



破坏设施 གཞི་རྒྱུ་ཁོ་ཁྲོན།



破坏设施 གཞི་རྒྱུ་ཁོ་ཁྲོན།



种地 མོན་འདྲེས།



牲畜 ཕྱོད་འཁྲོ།



砍伐 འཕྲོ་ཁྲོན།



砍伐 འཕྲོ་ཁྲོན།



砍伐 འཕྲོ་ཁྲོན།



打猎 ཕོན་ཕྱེད་པ།



其他 གཞན་པ།



























索南达杰——可可西里之魂



杰桑·索南达杰（1954年—1994年），藏族，曾担任青海省玉树藏族自治州治多县委副书记。1982年创立治多县西部工作委员会（西部工委），开展可可西里地区生态环境保护的工作。1994年1月18日，在打击盗猎者的搏斗中英勇牺牲。

杰桑·索南达杰以自己的实际行动实践了党章中规定的党和人民的利益高于一切的原则，实践了共产党人全心全意为人民服务的宗旨，在他身上充分体现了党的领导干部的优秀品质和崇高境界。

杰桑·索南达杰被中共青海省委授予“党的优秀领导干部”称号，还被国家有关部门授予“环保卫士”的称号。







三江源国家公园（试点）评估咨询会





Christina Larson Link

<https://apnews.com/e5b36687bb084eafa470dd21aac5bb4>